



Mottisfont & Dunbridge

ACORN



The Village Newsletter

February 2016

Young Scout's Tanzanian adventure

Oliver Taylor from The Mill Arms has been selected from Hampshire to represent the Scouts in Tanzania in 2017. Oliver will be part of a unit made up of 150 young people aged 14 - 18 who will be guided by 50 adult volunteers. Oliver decided to apply because Tanzania seems like an amazing experience that he would not be able to undertake without Scouting.



He was one of 150 successful candidates chosen for the trip of a lifetime after impressing at a special selection event in Farnham. Oliver had to complete a variety of team activities and creative tests to demonstrate why he should be part of the unit. The preparation for Tanzania

continued on page 4

The Acorn thanks its sponsors

The editors are most grateful to our three sponsors, the Social Club, the National Trust and Kimbridge Restaurant, for agreeing to continue to cover the printing costs of the Acorn throughout 2016.

We are also grateful to Mike Stevens for continuing to print the Acorn at very reasonable rates!

Did you know... that we email over 30 copies of the Acorn to people who don't receive paper copies? If you know anyone who would be interested to receive an email copy of the Acorn, just send us the address, and we'll add them to the list. By the way, we send paper copies to everyone in the parish, because it would be complicated to administer the arrangements for sending some people paper while others get emails (i.e. emails are only for people outside the parish).

Mottisfont Parish Passes

Parish Pass application forms for residents of Mottisfont and Dunbridge are now available from the Estate Office at Mottisfont National Trust.



National Trust

This pass will entitle each family member entry to Mottisfont so that you can enjoy the mansion, gardens and estate free, all year round.

We hope that as many parishoners as possible will take up this offer.

If you have not received an application form and would like to apply, please contact the office on 340757 for further details.

YOUR VILLAGE FETE NEEDS YOU!!!!

Can you help make the next Mottisfont Village Fete the best ever?

If you have ideas for stalls, food, drink, entertainment or anything at all, please bring yourself and your ideas to

The Mill Arms

Monday, 22nd February at 7pm

We plan to meet monthly at the pub to plan next August's fete

Bill's last post

To all my customers in Mottisfont and Dunbridge:

Many thanks for your generosity and good wishes on my retirement.

Have a good 2016.

Bill Lewis, your postman.

The deadline for inclusion of items in the March edition of the Acorn is 16th February.
Please email items to acornnews@mandercom.co.uk.



**National
Trust**

Happy New Year to everyone in Mottisfont & Dunbridge.

With our new visitor welcome centre and shop now open, we are continuing work on the new café in the stable yard, where the shop was previously. We do hope that you like the new building and will come over to see it. Either way, we'd love to hear what you think. And

remember, if you apply for a parish pass, you can come whenever you want for FREE!

We've been asked to update you about our work in the woodlands around the estate. As part of our ongoing woodland management, this winter has seen further forestry operations take place across the Mottisfont Estate. In compliance with our English Woodland Grant Scheme, overseen by the Forestry Commission and Natural England, we have continued thinning works and PAWS restoration within some of our soft wood plantations.

PAWS stands for "Plantation on ancient woodland sites," the restoration of which is important to retain any features of the ancient semi-natural woodlands (ASNW) that once stood here. At some point in history, areas of ASNW across the estate have been cleared and replanted with exotic and native species. As these sites are cleared or the remaining tree cover is thinned more light can penetrate to the woodland floor which will encourage natural regeneration of native deciduous tree species and associated ground flora. This is important in improving overall woodland biodiversity.

The timber that has been felled and extracted from the estate has been sold to several local saw mills to be converted into construction timber and fencing materials. The smaller diameter and lower grade material has gone to other sources including New Forest Energy where it will be processed into wood fuel.

Due to the nature of the machinery used throughout the forestry works, the tracks within Spearywell woods have incurred some damage. Funds from the sales of the timber have been set aside to reinstate these tracks. This work will be ongoing throughout the rest of winter but we will endeavour to complete it as soon as possible.

Some of the softwood plantations within Spearywell woods that have undergone forestry operations this year were originally arable land which was planted up in the 1950s. These areas do not have the associated features of ASNW so we will consider re-planting these with durable timber species that in time can be used for estate purposes. Large single

species plantations make us more susceptible to pests and diseases; with the onset of climate change and the increase in cases of known and new tree diseases we can help safeguard the future of our woodlands with mixed species planting.

As land managers we are responsible for ensuring that the estate woodlands meet several objectives. These include nature conservation, access and commercial revenue. The National Trust will continue to carry out sustainable woodland management practices to protect and preserve this beautiful landscape and its wildlife for everyone to enjoy.

Paul Cook
General Manager

Welcome Centre and Coach House Café...

We opened our Welcome Centre to the public on 8th January, beginning a new chapter in Mottisfont's history.

The striking building provides a more spacious and welcoming visitor reception area, while the light and airy shop is a great space to browse the National Trust's fantastic variety of products, with a new spring range now in place.

As well as providing a more fitting welcome for visitors, building these new facilities and moving the shop also allows us to create a much-needed additional café in the stable yard.

Opening in time for February half term, the Coach House Café will be a great place for light lunches and other refreshments, and is very accessible for families. The Stables Ice Cream Parlour will serve a wide range of scoop ice cream on sunny days, and the Old Kitchen in the house will continue to serve a full range of meals, cakes and drinks on china.

Visit our website at nationaltrust.org.uk/mottisfont and follow the link on the homepage to find out more about the project.

In the gardens...

The Winter Garden is still a lovely sight in February, with bright bark and berries providing splashes of colour. Come and take a fresh walk around the grounds to spot the first signs of spring - the first snowdrops have now emerged! We've planted an extra 18,000 spring bulbs around the gardens for this year, which will create some lovely displays.

In the gallery...

Thelwell: Ponies and Places
On display until 10 April

A major exhibition from the family archives of Norman Thelwell, whose popular cartoons of plump girls on ponies are joined by

continued on page 3

The WI

A enjoyable evening was held when Rev. Jill Bentall came to give a talk on 'Growing Old Gracefully'.

Jill used lots of humorous quotations and had as all in fits of laughter, as we were able to associate with a lot of the subject.



The next meeting is on Tuesday 9th February when there will be a visit from the Bishop's Handbells. We will meet at 7.30 in the Mottisfont Village Hall, and a warm welcome will be there for any guests who would like to join in this evening. Come and have a friendly chat and a cup of coffee or tea.

Mary Batten

Further use of station yard

Network Rail will be using the station yard again in February.

They will also be tidying up the site, by clearing out rubbish, scrappy trees and bushes, etc.

This will allow more of the ground area to be used and should also minimise the risk of a repeat of the parking problem experienced a few months ago.

continued from page 2

many other satires of twentieth-century life. Less familiar are Thelwell's beautiful paintings of local landscapes. He lived close to Mottisfont and captured the surrounding countryside in a series of stunning watercolours, many of which have never been exhibited before.

For families...

'Giddy Gallops' half term trail
Saturday 13 – Sunday 21 February, 10am – 5pm

Inspired by our Thelwell exhibition, families can explore the grounds and go on their own imaginary 'pony hack'! Lots of outdoor fun for everyone who wants to burn off a bit of energy during the holidays. Suggested donation £1

Keep in touch...

Our website (nationaltrust.org.uk/mottisfont) is a brilliant way to keep up to date with what we are up to, but did you know that you can get regular updates from us? We have a Facebook and Twitter page (@MottisfontNT) and our own monthly e-newsletter. If you would like to be added to our email list, simply get in touch with Marketing Officer Sophie on sophie.wilkinson@nationaltrust.org.uk.

MOTTISFONT PARISH COUNCIL

Meeting dates

Wednesday, 16th March, 2016

Annual Parish Meeting:

Wednesday, April 20th, 2016

Annual General Meeting:

Wednesday, 18th May, 2016

All meetings will be at 7.30pm in the Village Hall.

The Broughton and Mottisfont
Community Bus Committee
Charity Number: 284910

NOTICE OF ANNUAL GENERAL MEETING



The Broughton and Mottisfont Community Bus is run as a charity under the provisions of the law and the Charity Commission. An Annual General Meeting is held each year, to which members of the public are welcome. The 36th Annual General Meeting will be held in the Broughton Village Hall Monday 29th February 2016 starting at 7.30pm. The bus will collect people who wish to attend, starting from Dunbridge at 7pm. Those from Broughton wishing to attend and needing a lift should contact the Hon. Secretary, below.

The agenda to be discussed is:

- 1 Apologies.
- 2 Approval of minutes of 35th AGM.
- 3 Matters arising from those minutes.
- 4 Financial report given by David Mason.
- 5 Chairman's report given by Peter Broome.
- 6 Resignations and Election of Officers.
- 7 Any other business (including suggestions for excursions in the summer months).

Anyone wishing to come on to the committee, or nominating someone else, should contact either the chairman, Peter Broome, on 301635 or the secretary, George Vaughan, on 301045. The latest date for such nominations is 22nd February.

Dear Friends,

Lent is almost upon us, as Easter is very early this year, so just as you are packing away the tinsel we are moving towards Lent.



Ash Wednesday is on Wednesday 10th February, and we start our Lenten period with a service at St. Mary's, Broughton, at 7.30pm, with ashing and Holy Communion.

This year we will be following the Winchester Lent Course entitled *I Witness*. There will be five Monday lunch time sessions starting on 15th February at 11.30am, with lunch provided at 12.45pm, and we will finish by 1.30pm.

Venues will be notified by Revd. Gill in the pew sheet and by e-mail, and it would be good to know numbers, so if you are thinking of coming along please e-mail Gill directly on nobes@guernsey.net.

Lent is a very important time for engaging with the deeper things of our faith, and a time for setting new goals and seeking spiritual change and deepening. Lent is also the penitential season of approximately 40 days set aside by the Church in order for the faithful to prepare for the celebration of the Lord's Passion, Death and Resurrection. During this holy season, Christians are called to prepare for Easter by a recalling of Baptism and by works of penance, that is, prayer, fasting and almsgiving.

Ron Corne
Rector

continued from front page

started on 8th January 2016, and will continue over the next 18 months, during which time the Scouts will grow in confidence and learn many new skills.

Over the four week exploration, Oliver will join the 200 strong unit in order to camp, live and work together for an unforgettable month of celebration and international friendship. Between a safari and exciting outdoor activities, they will challenge themselves with a range of community projects, such as helping to build a new medical centre, providing skill workshops or renovating a primary school. 2017 will also see Tanzanian Scouts reach their centenary and Oliver will help create them a campsite, with facilities, they can use for many years to come. The activity headquarters will also feature a mini-Jamboree where the Scouts from Hampshire and Tanzania will celebrate together and make lifelong friendships.

Oliver, aged 13, said 'I am very happy to be representing my scout group on such an amazing trip. I'm looking forward to fundraising over the coming months, if you have any jobs you'd like me to do I'd be happy to help!'

If you would like to sponsor Oliver or donate towards the cost of the project please contact kayetaylor2000@yahoo.co.uk. The Mill Arms will be hosting various fundraising events throughout the year and there are collection jars on the bar for any loose change you could kindly donate.

CHURCH SERVICES FOR FEBRUARY 2016

	7th February Next before Lent	14th February Lent 1	21st February Lent 2	28th February Lent 3
8.00 am	BROUGHTON HC CW	-	BROUGHTON HC BCP	-
9.30 am	BOSSINGTON HC BCP	BROUGHTON HC CW & Sunday Club	BROUGHTON Family Service MOTTISFONT HC BCP	BROUGHTON Family Communion CW & Sunday Club
11.00 am	HOUGHTON No service	MOTTISFONT Messy Church	HOUGHTON Family Communion CW	MOTTISFONT Family Communion CW
6.00 pm	MOTTISFONT Evensong	HOUGHTON Evensong	-	HOUGHTON Evensong

Every Wednesday 9.30am St. Mary's Church, Broughton, HC BCP
HC = Holy Communion; BCP = Book of Common Prayer; CW = Common Worship
Wednesday, 10th February, Ash Wednesday not 9.30am but 7.30pm
Holy Communion with the Imposition of Ashes

Messy Church Club at St. Andrew's Church, Mottisfont

Messy Church Club is not an ordinary church service. It is a short and informal, interactive, child-focused gathering at St. Andrews' church in Mottisfont. It's held on the second Sunday of each month at 11am.

It's a chance to do art and craft activities, sing songs, listen to stories and learn something new. Meet some of our community whilst having fun. Although the service is child-focused, everyone is welcome. There are always refreshments at the end, and it's a great way to meet new friends.

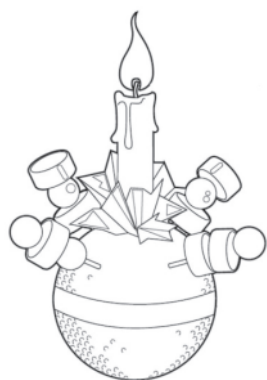
The dates until summer 2016 are as follows – just turn up.

Sunday, February 14th 2016
 Sunday, March 13th 2016
 Sunday, April 10th 2016
 Sunday, May 8th 2016
 Sunday, June 12th 2016



The January Messy Church was all about Creation. We made junk animals (it's amazing what you can make out of an egg box and some pipe cleaners!), primordial slime and some lovely fruit kebabs which were very tasty, with coffee, squash and biscuits at the end.

"I like Messy Church Club because there are always fun activities to do. I like hearing the stories about Jesus and God because they are told in a way that I can understand. My favourite service is Christingle because we get to make an orange Christingle and sometimes we go over to the Abbey for biscuits – that's why I like Messy Church." Daniel 8 years old.



"I like Messy Church Club because there are always some crafts going on. You get to learn about God and Jesus, and Gill always has interesting stories, and all the people who go are really lovely. For the Pet service we took our chicken to church! Some of my favourite activities were tree decorations, flags and windmills, Easter

candles, junk animals, and once we made our own stained glass windows." Ava 7 years old.

Messy Church Club is for all the family, so come along and get messy!

Contact Gill Nobes on 341010 if you'd like further information.

BROUGHTON BRIGHT HOUR

Thursdays at 2.30pm in the Meeting Room at St. Mary's Church, Broughton

Events for February

4th February: Members Meeting
 11th February: Mr Ron Caddy
 18th February: Mr David Stone
 25th February: Mrs Sheila Few

Everyone welcome. Please come and join us.

Barbara Perry,
 Booking Secretary, 301466

Women's World Day of Prayer

The W. World of Prayer this year is on Friday 4th March at 2.30pm in St. Mary's Church, Broughton.

Please join us at St. Mary's to join 3 million men and women as they pray together for Cuba. The Day of Prayer each year is an international, ecumenical, prayer movement that comes from a different part of the world each year, so that their country's hopes and fears may be brought before the whole world in prayer.

On Friday 4th March an estimated 3 million people in over 170 countries and islands will gather to observe the day of prayer, written by Christian women in Cuba and translated into over 60 languages and 1000 dialects. In the British Isles alone over 6,000 services will be held and we are delighted to join in this occasion.

The day begins as the sun rises over the island of Samoa and continues until it sets off the coast of American Samoa, some 35 hours later. The theme 'Receive children. Receive me' reflects St. Mark's Gospel, chapter 10 v. 13-16, and is the focus of the service. It reminds us all that everyone is a child of God and equally worthy of our love and respect.

If you would like to take part please contact me, otherwise please just come along and join us. We will have refreshments after the service.

Ann Ridout, 01980 862232.

Yours or ours?

A vicar spoke to his congregation:

"I have good news and bad news. The good news is that we have enough money for the repairs to the church hall roof.

"The bad news is that this money is still in your pockets!"

MOTTISFONT PARISH COUNCIL - VACANCY

Mottisfont Parish Council has a vacancy for a councillor. If you are interested in applying, please email the clerk at mottisfont.clerk@tesco.net.

Main Duties and Responsibilities

1. To attend Parish Council meetings every 6 weeks, on a Wednesday evening.
2. To prepare for meetings and be properly informed about the issues to be discussed.
3. To take part in meetings and form sound judgments based on what is best for the community and then abide by majority decisions.
4. To represent effectively the interests of and deal with Parishioners enquiries, representations and complaints.
5. To represent the Parish Council on outside bodies to which you are appointed.
6. To ensure, with other councillors, that the Parish Council is properly managed.
7. To fulfill the statutory and locally determined requirements of an elected or co-opted member of the Parish Council, including compliance with all relevant codes of conduct and maintaining high ethical standards, (including not disclosing confidential information and not using council resources for political purposes or for any other reason unless agreed by the Council)
8. To keep up to date with significant developments affecting the Parish Council at local, regional and national levels.
9. To represent the whole electorate; listen, and then represent the views of the whole community when discussing council business and working with outside bodies.

Walking Group

We enjoyed a nice walk over the Christmas holidays from Dean back to Dunbridge along Dean Hill, and on 8th January from Appleshaw to the Shutes with a nice lunch at the Hatchet - about seven miles.



The walks are very sociable and not too difficult.

Why not come along and give it a go!

Our next walks are on:

- 12th February,
- 11th March
- 8th April

(all Fridays), leaving around 9.30/10am.

Gordon and Cathie Wood, 340129

Test Valley Lecture

Wednesday February 17th. 8pm. Broughton Village Hall

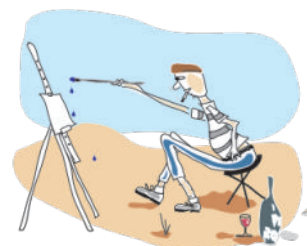
The title of this month's lecture is the intriguing "Sir William Harcourt's Fireside; Property development in the late nineteenth century New Forest". Our speaker, Catherine Glover, has researched the way in which small keepers' lodges were developed into rather grandiose mansions, several of which may be familiar to us as hotels. As Sir William Harcourt was Chancellor of the Exchequer, and invented death duties, the story involves not just planning and architecture, but the workings of government departments such as the Office of Woods and the Treasury.

Catherine Glover lived just north of the New Forest in Landford, Wiltshire from 1984 to 2012. It was there that she started an MA in Regional and Local History and Archaeology at the University of Winchester. She has also recently started researching the development of national parks in England. She is the copy editor for the Agricultural History Review and other historical works, and runs web sites for organisations such as the British Agricultural History Society (www.bahs.org.uk).

All are welcome. Entry £3 to include a glass of wine.

Art Group

The Art Group meets every Thursday afternoon at the Village Hall, from 2pm to 4pm. It costs £2 per person, to cover hall costs and includes refreshments.



Quite a friendly group really!

Gordon 340129

Events at the Mill Arms

The Mill arms has just confirmed some dates with Chalky Gravell, an acoustic duo featuring local man Matt Chalk. They'll be playing on Saturday 13th February as part of their Valentine's celebration and then on the following dates: 12th March, 9th April, 14th May and 11th June (all Saturdays).



They are also announcing the welcome return of the Shamrock Keys on Friday 4th March.

KIMBRIDGE RESTAURANT

Tropical cheesecake

This recipe serves 8 people.

Ingredients

4 limes zest and juice
100g caster sugar
400g full fat soft cheese
50g dried shredded coconut
1 ½ packets of digestive biscuits
50g melted butter
100g double cream
30g mango puree
4 leaves gelatine



Kate Buchan,
Sous Chef
at Kimbridge
Restaurant

How to make it

Grease the edges of an 8 inch loose-bottomed tin and line with baking paper. Blitz the digestives in a blender, or alternatively put them in a sealed bag and hit with a rolling pin, until the biscuits are reduced to crumbs. Melt the butter and mix with the crushed biscuits and coconut. Make an even layer from this mixture in the bottom of the tin, and then put the tin in the fridge to chill while making the filling.

Place the cream cheese in a mixer and mix gently until soft, adding the double cream to loosen the cheese. Once thoroughly mixed, add the zest and juice of the limes and mix thoroughly.

Retrieve the base from the fridge and put the cheesecake mix on top of the base. Knock the tin gently on the table top so that any air at the bottom of the tin is removed. Spread the mix evenly, and put the cheesecake back into the fridge to chill.

Meanwhile soak the gelatine in cold water until soft. Heat the mango puree so it is hot but not boiling, then stir the gelatine into the puree until dissolved. Allow to cool a little, and then retrieve the cheesecake from the fridge and carefully pour the mango mix over the top of the cheesecake in an even layer. Return it to the fridge to set, overnight for best result.

Remove the cheesecake from the tin, discard the paper lining, and using a hot clean knife cut the cheesecake into portions, wiping the knife each time so you get a clean cut.

Missing snood

On a walk from East Dean station to Dunbridge via Dean Hill, I lost a snood (a cylindrical scarf). It is turquoise with a pattern of penguins. If you happen to have found it, please call Brenda on 341304.

What's on in February

All Fridays are **Fish Fryday** - home made battered cod with tartare sauce, £9.95, from 12 noon to 3pm

All Saturdays are **Family Day** - children under 12 eat main course free from the children's menu when eating with an adult

All Sundays are **Roast Lunch Day** - served with gravy, vegetables and potatoes for £10.45

6th February: **Chinese New Year**. Eat as much as you like buffet.

13th February: **Valentine Evening Dinner**

18th February: **Dave and Steph**. Live music evening with hot buffet

24th February: **Quiz Evening**. including hot buffet

Sunday to Thursday: 10-5, Friday to Saturday 9-5
01794 340556 / 777

Kimbridge Lane, Timsbury
Romsey, Hants. SO51 0LE
www.kimbridgerestaurant.co.uk
kimbridgerestaurant@gmail.com

**Waiting staff required,
part or full time,
to work with our
friendly team.**

**Please telephone
07966 068844.**

Whist Drives at Mottisfont Village Hall

We will be holding our ever-popular monthly whist drives at Mottisfont Village Hall on:

- Friday, 29th January
- Friday, 25th February
- Friday, 18th March
- Friday, 29th April



Commences at 7.30pm. Only £2, which includes refreshments. There's also a raffle.

Can't play or need a refresher game? Ring Gordon or Cathie Wood on 340129.

Mottisfont Social Club

Mottisfont Social Club welcomes families, and offers a friendly face and reasonably priced bar. We have a range of giant games for children, and for the adults there is a choice of a snooker table, pool table, five dart boards, skittle alley, adequate parking and a garden for the warmer weather. The club is very well situated in the heart of the village and members can take advantage of the premises as a free venue for their birthday parties and family celebrations - come in and ask for details.



memory of Kate, and raises funds for Romsey Hospital.

We now have a Karaoke machine so if you like a sing-song, look out for advertised dates, or arrange your own evening.

The Club is open every evening from 7pm until 11pm (Sunday 10.30pm) and Sunday lunchtime 12 noon until 2pm.

WHAT'S ON AT THE CLUB

Thank you to all who used the Club on Christmas Day for lunch time drinks. We hope to make this a regular event.

Lockerley Pre-School are running a Quiz Night on Saturday 20th February. 8.15pm start, all welcome.

The Club's AGM is to be held on Wednesday 9th March, 8pm start. Please come and show your support.

Mottisfont Social Club Annual Beer Festival, with live bands, will be held over the late Spring Bank Holiday week-end, 27th to 30th May.

The Kate Fryer Annual Skittle evening will take place on Saturday 4th June, 8pm start. This event is in

The Dowse Trust

The Dowse Trust is a long-standing charity set up to promote the education, including social and physical training, of persons under the age of 25 years in the area of Mottisfont, Bossington and Broughton. The trust is able to help with providing financial assistance for items such as uniform, clothing, tools, instruments, books or educational visits to help youngsters at school, college, university, or any other educational establishment, to prepare for a profession, trade or calling.

The next meeting of the Dowse Trust will be on Thursday 17th March. All applications should be sent to the secretary by Sunday, 6th March.

Application forms are available at St. Mary's Church Broughton, Mottisfont Church, and from Broughton Primary School, or by email from the secretary, tinastuart1(spam-foiler)@gmail.com (leave out the spam-foiler!).

Who's Who, What's What and Where's Where in Mottisfont & Dunbridge

Acorn Editors	Peter & Julia Barnett	340793			Andrew Simmonds	
Acorn Community Pre-School Supervisor	Danae Matthews	342441			(mottisfont2@gmail.com)	
		07860	St. Andrew's Church	Rector	Julia Barnett	340793
		662685		Curate	Revd. Ron Corne	301287
Allotments (Dunbridge)	Kim Bown	342204		Reader	Revd. Gill Nobes	341010
Art Group	Gordon Wood	340129		Wardens	Gina Livermore	388433
Cricket Club	Secretary	Steve Godwin			Susan Clutterbuck	340475
		07801	Social Club	Chairman	Trish Armstrong	341120
		522979		Secretary	Peter Simmonds	340891
History Group		340105		Steward	Peter Holmes	340521
First Responders	Coordinator	Marion Gray			Linda Holmes	340521
Football Club	Secretary	Alan Stewart	Test Valley Councillor		Ian Jeffrey	388872
Hampshire County	Councillor	Andrew Gibson	Village Bus	Secretary	George Vaughan	301045
		01264		Bookings	Pam Dawkins	301203
		861138		Private Hire	Julie Smith	301470
Kimbridge Restaurant		Allan Gray		Operations	Peter Broome	301506
& Annes Tearooms		340777		Chairman	Lynn Young	340134
Member of Parliament		Caroline Nokes	Village Hall	Secretary	Jenny Wineberg	340843
Mill Arms		Kaye and Richard	(Reg.Charity	Bookings	Tony Stemp	340398
Mottisfont Abbey	Gen. Manager	Paul Cook	No. 291629)	Secretary	Cathie Wood	340129
Neighbourhood	Mottisfont	Alan Earthrowl	W.I.	Press reporter	Mary Batten	514384
Watch	Dunbridge	Cliff Astur		Village	Joanna Cole	101
Parish Council	Clerk	Sue Holder	Police		(request to be put through to Romsey to speak to Joanna Cole)	
	Chairman	John Millns			Non-emergency calls	101
	Councillors	Jeff Channing				
		Gareth Jenkins				
		340922				

The Acorn is also available at www.theacorn.org.uk, where you will also find links to local schools, pubs, trains, council, church, WI and more

Mottisfont & Dunbridge Acorn is edited and published by Peter & Julia Barnett, Dunelm House, Barley Hill, Dunbridge, Romsey, SO51 0LF, telephone: 01794 340793, acornnews@mandercom.co.uk, with assistance from the National Trust, Kimbridge Restaurant and the Mottisfont Social Club. Opinions expressed in The Acorn are not necessarily those of the editorial team. We do our best to ensure the accuracy of items in The Acorn, but we will not be responsible for the consequences of errors or omissions. You should check with organisers of events in case there are last minute changes. © Mottisfont & Dunbridge Acorn, 2016.