

MOTTISFONT VILLAGE HALL

Sunday, 13th December, 12 noon to 3pm



Following the success of the Harvest Supper in September, the Village Hall Committee would like to invite everyone in the parish to this free event.

It is an opportunity to meet friends and neighbours from the village, and maybe even make some new friends. Everyone, especially families with children and newcomers to the village, is welcome.

To make this an enjoyable occasion, please bring enough finger food for yourselves to share with everyone. This could be a plate of sausage rolls, sandwiches, cocktail sausages, cheese and pineapple on sticks, crisps, Twiglets, peanuts, mince pies, cakes or anything Christmassy. Please bring your own drinks. Tea and coffee will be provided.

Tony Stemp will be organising a raffle.

We will be at the hall from 10am on the day to decorate the room, so if you have some balloons, glitter or tinsel to spare, please bring them along and give us a hand to put them up.

As numbers in the hall are limited, please let us know you will be coming.

*Dave and Pat Francis,
340609, pwfrancis@hotmail.co.uk*

The Acorn takes a break

Please note that the next edition of the *Acorn* will be published at the beginning of February.

We wish you a joyous Christmas and New Year!

Julia and Peter (editors)

Nigel and Helen Charlton

Neighbours and friends are shocked and saddened by the news that Nigel and Helen died in a helicopter crash in New Zealand on 21st November.



Since retirement from their dental practice we had seen a lot more of them both; Helen in her garden and Nigel, so proud of his signal box and beloved trains.

The last few years had also seen them involved in the village fete: Helen selling her beautiful handicrafts and Nigel acting as compere for all the day's activities.

We will each have our own personal memories of them and send our sincere condolences to their family.

Margaret Astur

Life Saving Equipment

The Automatic External Defibrillator is now located on the outside wall of the Awbridge Village Hall for easy access.



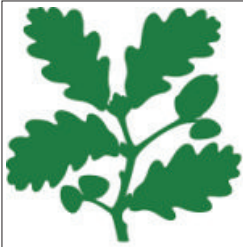
Come and find out how to use it at:

Awbridge Village Hall on

Thursday, 3rd December at 7pm

AED Familiarisation:
a talk by Stephen Cartwright,
Community Liason & Training Officer,
Public Access Defibrillators,
South Central Ambulance Service

Mince pies and refreshments



**National
Trust**

***Merry Christmas to all
Mottisfont & Dunbridge
residents from everybody
here at the National Trust.***

It's been a busy year, but one we can look back on with some satisfaction. The new visitor Welcome Centre and shop is nearing completion (open to the public on 8th January, 2016) and then we start to fit-out the new Coach House Café (open mid-late February, 2016). The mansion itself has had its external decorations completed and the colour takes it back to the colour it was in the 1950s, when Maud Russell lived here.

Around the estate, our countryside team of staff and volunteers have commenced their winter woodland management programme, which will include further work on wide rides (corridors for bats and other wildlife), planting indigenous trees such as oak, hazel coppicing and extraction of some soft wood. The Oakley Beat Restoration project is now complete and we are looking forward to seeing the results in the summer.

Over Christmas, we are creating the nativity scene along Spearywell Road with the support of the church. This is a village tradition, and we do hope that you will join us on 18th December at 6pm for carols and mince pies.

And just a reminder about the Parish Pass, which enables free access to everyone who lives in Mottisfont & Dunbridge to the house and gardens. For an application form, please email us at Mottisfont@nationaltrust.org.uk.

Paul Cook, General Manager

New Welcome Centre

We're very excited to reveal our new Welcome Centre to the public this winter, beginning a new chapter in Mottisfont's history. Opening on 8th January, this exciting new building will contain our new Visitor Reception, shop and toilets, as well as places to meet people and plan your visit. Come and take a look!

In the house...

A Christmas Carol, Saturday, 28th November to Sunday, 3rd January, 10am – 4pm (closed 24th & 25th December)

Follow the story of Charles Dickens' A Christmas Carol as it unfolds around the property, brought to

life with beautifully designed story sets and paper costumes.

A family-friendly trail takes you through the classic story: help Scrooge count money in the chilly gloom of his counting house, make chains with the ghost of Jacob Marley, and celebrate with a grand party around the giant Christmas tree. Children can also dress as characters from the book and make Victorian toys.

Upstairs in the gallery you'll find an exhibition of delightful Christmas-themed prints by famous artists and illustrators, and a display of vintage Christmas cards.

We'll have a special Christmas menu on offer until 23rd December, serving festive favourites as well as warming seasonal fare.

In the gardens...

Enjoy the crisp winter air in our gardens. Experience the vibrant colours of the winter garden, now coming into its own as it matures.

Stroll along paths that wind through winter-flowering shrubs and perennials. There's brilliantly coloured winter bark from dogwood and ornamental bramble, while berries, fruit and late- and early-flowering perennials also provide colour during the shortest days of the year.

In the gallery...

Thelwell: Ponies and Places, 17th January to 10th April

A major exhibition from the family archives of Norman Thelwell, whose popular cartoons of plump girls on ponies are joined by many other satires of twentieth-century life. Less familiar are Thelwell's beautiful paintings of local landscapes. He lived close to Mottisfont and captured the surrounding countryside in a series of stunning watercolours, many of which have never been exhibited before.

Keep in touch...

Our website (nationaltrust.org.uk/mottisfont) is a brilliant way to keep up to date with what we are up to, but did you know that you can get regular updates from us? We have Facebook and Twitter pages (@MottisfontNT) and our own monthly e-newsletter. If you would like to be added to our email list, simply get in touch with Marketing Officer Sophie on sophie.wilkinson@nationaltrust.org.uk.

The WI

In November we welcomed 17 members and 2 visitors to our monthly meeting. The speaker was Andrew Negus, who told us about the early years of Portsmouth before it become the large city that we now know. We were given a brief history lesson on how the city evolved and the conditions that people lived in. Even in the early days the Navy played an important role, and wooden ships were built and repaired there.



During the month of November a successful Apple Pie morning was held and enjoyed by those who attended.

The meeting in December is to be a Christmas party for members, and it is hoped that all members will be able to attend and enjoy a party atmosphere.

The meeting in January will be held on Tuesday, 12th at 7.30 in Mottisfont Village Hall when the speaker will be the Reverend J Bentall, and the subject will be 'Growing Old Gracefully'. Guests will receive a warm welcome at this meeting, so why not come along and enjoy a cup of coffee or tea with us.

Wishing everyone a Very Happy Christmas and New Year.

Mary Batten

Lockerley Primary School Christmas Fayre

Friday, 4th December, 3.30pm - 5.30pm

Winter BBQ, Raffle, Tombola, Craft Stalls, Games and Someone Special in the Grotto!

We look forward to welcoming you.

LOCKERLEY PRIMARY SCHOOL READING SCHEME

Lockerley Primary School reading scheme is a huge success and we are looking to expand our daily volunteers to spend either 25 minutes of their morning or 1 hour of their afternoon to listen to children read.

The sessions run from 8.55 to 9.20 each morning or for an hour between 1.00 and 3.00 during the afternoon. If you are interested in taking part, please speak to Julie Black or Helen Restorick-Banks.

All volunteers will have to have a DBS (criminal records check) before they can commence.

We look forward to hearing from you.

Helen Restorick-Banks,
Assistant Headteacher, 340485

The Test Valley lecture series in Broughton

The 2016 programme will start on **Wednesday, 20th January** with a lecture by Paul Cook, General Manager of the Mottisfont Estate.

Paul will be talking about the development of the estate into its current status as a major visitor attraction, and the responsibilities of the National Trust for the stewardship of the estate and its distinctive countryside. All are welcome to attend. 8pm in Broughton Village Hall. £3 entry fee includes a glass of wine and a contribution to the Mottisfont Walled Garden Appeal.

MOTTISFONT PARISH COUNCIL

Meeting dates for 2016

Wednesday, 20th January, 2016

Wednesday, 16th March, 2016

Annual Parish Meeting:

Wednesday, April 20th, 2016

Annual General Meeting:

Wednesday, 18th May, 2016

All meetings will be at 7.30pm in the Village Hall.

Festive Chimneys & Fires

Good King Wenceslas may not have been quite the 'good' King we sing about. You may recall the words of the song indicate that the 'poor man' was gathering winter fuel. As a result, the King ordered that he be brought pine logs to deliver to the 'poor man'.

The fact is that pine has exceptionally high resin content; this resin becomes creosote (tar) when burnt and is very likely to 'tar up' the flue. Tar is a problem for a number of reasons: it is frequently cited as the cause of chimney fires, and a chimney fire can damage the chimney (including wood burner flues).

After Christmas there may be a temptation to burn our lovely Christmas trees on your home fires. Is this a good idea? The needles and small branches may 'flare' when burnt and could ignite any residual soot or tar in the chimney! So, however tempting it is to throw that tree on the fire at twelfth night, this wood cannot be seasoned and may result in serious problems, so please resist the urge!

If you have concerns regarding your chimney, or need it to be promptly swept, Neat Sweeps can help. For more information visit www.neatsweeps.co.uk, phone 341812, or email neatsweeps@gmail.com.

From all at Neat Sweeps we wish our current (and future!) customers a very Merry Christmas, a Happy New Year, and a safe burning season.

Dear Friends,

Christmas 2015 is almost upon us and as I write this Christmas message I am reflecting upon the horrors of the Paris terrorist attack with so many people killed and injured. I want to be upbeat and happy; after all it's Christmas! But at the same time, what makes us human beings is the ability to empathize with others, being able to look back at what has happened, and think ahead to what might be.



Christmastime is not just a very beautiful story about an infant child being born into the world, with angels and stardust. It is more especially about a real human being born into the real world with a fanfare of trumpets, yes and a choir of angels, yes shepherds and wise men too. But it is crucially also about a child, real and full of life, who looks our world and our lives in the eye of perception, directly in the eye, and who says to us, "Yes I know! I know what it is to be human, I know what it is to be loved, I know what it is to be rejected and ill treated by others and yes even killed. Yet in all of this, I open my hand to you as your Lord and your Saviour."

As Julian of Norwich, a great Christian mystic of the fourteenth century, author of the book known as the *Sixteen Revelations of Divine Love* says, "all shall be well, and all manner of things shall be well."

All will be well because your Lord and your Saviour is born into the world, and has overcome the world, and is with you always, "yes," said Jesus, "even to the end of all time". What a most wonderful promise, the Lord of love and life brings to us!

May you be richly blessed this Christmas, and may the year to come be one where you can know Christ's presence and love is with you both in the difficult and in the good times.

Please join us for our Christmas worship across the Benefice.

With my prayers and blessings

Ron

BROUGHTON BRIGHT HOUR

Thursdays at 2.30pm in the Meeting Room at St. Mary's Church, Broughton

Events for December

3rd December: Christmas Lunch.

10th December: Visit to the Fairground Craft Centre, Weyhill.

No further meetings until February 2016.

Everyone welcome. Please come and join us.

Barbara Perry,
Booking Secretary, 301466

Laugh? Very nearly...

A boy was watching his father, a vicar, write a sermon for the Christmas service.

'How do you know what to say?' he asked. 'That's simple, God tells me', the father replied.

'Oh, then why do you keep crossing things out?'

~~~~~  
A rabbi, a priest and a minister walk into a bar. The bartender looks up and says, 'What is this, a joke?'

## Fresh Expressions Vision Event



**Imagine church  
for those who don't do church**

Come and explore new ways of building Christian community in rural areas

Saturday, 30th January, 09.45-16.00

Speakers: Phil Bromiley, Tim Sledge.

Cost: Free. Please bring your own lunch.

Venue: Braishfield Church Room, Church Lane, Braishfield, SO51 0QH

For more information or to book:  
braishfieldbenefice@gmail.com

**CHURCH SERVICES FOR DECEMBER AND JANUARY**

| <b>Date</b>                               | <b>Time</b> | <b>Location</b>                  | <b>Service</b>                          |
|-------------------------------------------|-------------|----------------------------------|-----------------------------------------|
| Sunday, 6th December<br>Advent 2          | 8am         | Broughton                        | Holy Communion CW                       |
|                                           | 9.30am      | Bossington                       | Holy Communion BCP                      |
|                                           | 11am        | Houghton                         | Christingle                             |
|                                           | 6pm         | Mottisfont                       | Evensong                                |
| Sunday, 13th December<br>Advent 3         | 9.30am      | Broughton                        | Holy Communion CW, & Sunday Club        |
|                                           | 11am        | Mottisfont                       | Christingle                             |
|                                           | 6pm         | Houghton                         | Evensong                                |
| Thursday, 17th December                   | 2.30pm      | Broughton<br>(St. Mary's Church) | Broughton Primary School Carol Service  |
| Friday, 18th December                     | 6pm to 7pm  | Spearywell Orchard               | Carol singing, followed by refreshments |
|                                           | 6.30pm      | Bossington                       | Carol Service                           |
| Sunday, 20th December<br>Advent 4         | 8am         | Broughton                        | Holy Communion BCP                      |
|                                           | 11am        | Mottisfont                       | Carol Service                           |
|                                           | 6pm         | Broughton                        | Carol Service                           |
| Monday, 21st December                     | 7pm         | Houghton                         | Carol Service                           |
| Thursday, 24th December<br>Christmas Eve  | 3pm         | Mottisfont                       | Crib Service                            |
|                                           | 5pm         | Broughton                        | Crib Service                            |
|                                           | 11.30pm     | Broughton                        | Benefice Midnight Mass                  |
| Friday, 25th December<br>Christmas Day    | 9.30am      | Broughton                        | Family Communion                        |
|                                           | 9.30am      | Bossington                       | Holy Communion BCP                      |
|                                           | 11am        | Mottisfont                       | Family Communion                        |
|                                           | 11am        | Houghton                         | Holy Communion CW                       |
| Sunday, 27th December<br>Christmas 1      | 9.30am      | Broughton                        | Holy Communion CW<br>for the Benefice   |
| Sunday, 3rd January<br>Epiphany           | 8am         | Broughton                        | Holy Communion CW                       |
|                                           | 9.30am      | Bossington                       | Holy Communion BCP                      |
|                                           | 11am        | Houghton                         | Family Service                          |
|                                           | 6pm         | Mottisfont                       | Evensong                                |
| Sunday, 10th January<br>Baptism of Christ | 9.30am      | Broughton                        | Holy Communion CW, & Sunday Club        |
|                                           | 11am        | Mottisfont                       | Family Service                          |
|                                           | 6pm         | Houghton                         | Evensong                                |
| Sunday, 17th January<br>Epiphany 2        | 8am         | Broughton                        | Holy Communion BCP                      |
|                                           | 9.30am      | Broughton                        | Christingle Service                     |
|                                           | 9.30am      | Mottisfont                       | Holy Communion BCP                      |
|                                           | 11am        | Houghton                         | Family Communion CW                     |
| Sunday, 24th January<br>Epiphany 3        | 9.30am      | Broughton                        | Family Communion CW, & Sunday Club      |
|                                           | 11am        | Mottisfont                       | Family Communion CW                     |
|                                           | 6pm         | Houghton                         | Evensong                                |
| Sunday, 31st January<br>Candlemas         | 9.30am      | Broughton                        | Holy Communion CW<br>for the Benefice   |

Every Wednesday at 9.30am at St. Mary's Church, Broughton: Holy Communion, BCP

## The Mill Arms



**Festive menu** throughout December. 2 courses £17, 3 courses £21

**Starters:** Chicken liver paté with melba toast; filled flat mushroom with blue cheese & bacon rarebit; poached pear & goats cheese on a balsamic crouton; roasted tomato soup with crusty bread.

**Mains:** Hand carved roast turkey with pigs in blankets, rosemary & garlic roast potatoes, yorkshire pudding, seasonal vegetables, stuffing balls, a rich gravy & cranberry sauce; roasted pork belly stacked with black pudding, served with caramelised apple pieces and rosemary & garlic roast potatoes; seabass wrapped in prosciutto with roasted medley of vegetables and lemon & rosemary butter; homemade nut roast with rosemary & garlic roast potatoes, seasonal vegetables and gravy.

**Desserts:** Traditional Christmas pudding with brandy sauce; chocolate truffle tart with raspberries and cream; Christmas trio of ice cream in a brandy snap basket; Banoffee Eton Mess.

### Special offers (reservation required)

**Mondays:** Steak Night, 2 for £20

**Wednesdays:** Burger Night, 2 for £15

**Fridays:** Pizza Night, 2 for £20

**Sundays:** Roast platter, 4 for £36

### Christmas opening hours

- **Wednesday, 23rd December:** Family quiz night. The pizza oven will be fired up. Mulled wine and mince pies for teams taking part. Best/worst (often the same!) Christmas jumper competition. £5 entry per team, winner takes all.
- **Christmas Eve:** Restaurant will close at 8pm, bar at 9pm
- **Christmas Day:** Closed
- **Boxing Day:** 12 - 4pm restaurant, bar closes at 5pm
- **New Year's Eve:** Restaurant will close at 8pm, bar at 9pm
- **New Year's Day:** Our famous New Year's Day Brunch will run from 11am until 3pm. Bar closes at 4pm.

Tel: 340401 email: mill.arms@btconnect.com  
web: www.millarms.co.uk

## Walking Group

The next walk will be on Friday, 11th December. We are also planning to "**walk off your Christmas excesses**" on Tuesday, 29th December, from Dean to Mottisfont, catching the 9.56 train to Dean.

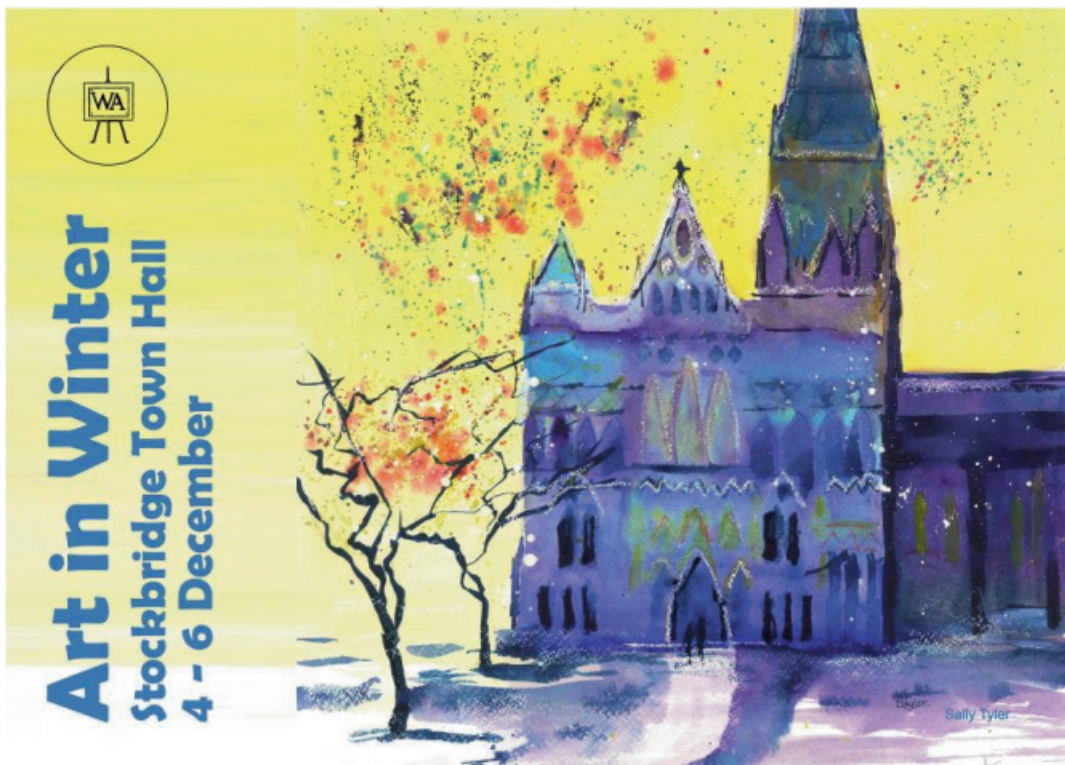


Our walks are approximately 3 – 4 hours duration, depending on mid-walk refreshments.

In the New Year, we plan to hold walks on the following Fridays: 8th January, 12th February, and 11th March.

Everyone welcome.

Gordon & Cathie, 340129



## Art in Winter

Twelve leading artists from the Stockbridge area are exhibiting in the Town Hall from the 4th to the 6th of December. Visitors to the show will find paintings, prints, cards, ceramics, silver and jewellery at this event organised by Wallop Artists.

Opening times:  
4th December 19:00 – 21:00  
5th December 10:00 – 17:00  
6th December 10:00 – 15:00

Admission: Free  
Parking: Free on street parking



## KIMBRIDGE RESTAURANT

### Chicken liver, cranberry and chestnut paté

This recipe serves 4 people.

#### Ingredients:

1 tablespoon olive oil  
2 shallots, finely chopped  
3 sprigs of thyme, leaves only  
1 garlic clove, crushed  
1 pinch freshly grated nutmeg  
1/2 teaspoon ground allspice  
1 orange, zest only  
400g chicken livers, trimmed  
50ml brandy  
100ml double cream  
120g butter  
50g fresh/frozen cranberries  
150g chopped chestnuts  
80g butter for sealing the paté tops



Kate Buchan,  
Sous Chef  
at Kimbridge  
Restaurant

#### How to make it:

Heat the oil in a medium pan. Add the shallots and thyme, and cook gently for 5 minutes or until soft. Add the garlic, spices, orange zest and a good pinch of salt and pepper and cook for a further two minutes.

Add the chicken livers to the pan and fry for 6-8 minutes, or until just cooked through. To test, remove a piece of liver from the pan and cut it open. It should be moist but no longer bloody. Remove from the heat, place in a food processor and blend until smooth.

Add the brandy to the pan to deglaze it, then add the cream and bring to a simmer. Cook for two minutes, stirring up any residue from the pan. Pour into the food processor and blend again until smooth. With the motor running, gradually add the cubed butter and blend until smooth.

Pass the mixture through a fine sieve into a bowl. Add the cranberries and chopped chestnuts, then divide between the ramekins. Smooth the tops down by gently banging the ramekins against a work surface, then place them in the fridge while you prepare the butter for the top.

Melt the butter in a pan. Add a sprinkling of mace to the butter, then pour evenly over the ramekins and set a bay leaf and a few cranberries in the butter to decorate. Chill for a minimum of 2 hours, or for best result overnight.



*Merry Christmas from all the staff at  
Kimbridge Restaurant!*

### What's on in December

1st to 24th December: Bookings for Christmas lunches and selected dinner dates.

2nd December: Christmas quiz with a lovely Christmas buffet and a few surprises. 6pm start, £10.95.

11th December: Open till 8pm for full menu & some late Christmas shopping.

15th December: Open till 8pm for full menu & some late Christmas shopping.

19th December: Open till 8pm for full menu & some late Christmas shopping.

22nd December: live music with DC Saxes plus Christmas buffet. Start 6pm, £10.95, including hot buffet.

25th December: Christmas Family Day, one sitting 12 till 3. See menu on line or in house.

31st December: New Years Eve, 8pm till 2am. £50 for a cold sliced buffet including sirloin of beef & salmon. More details to follow.

Sunday to Thursday: 10-5, Friday to Saturday 9-5  
01794 340556 / 777

Kimbridge Lane, Timsbury  
Romsey, Hants. SO51 0LE  
[www.kimbridgerestaurant.co.uk](http://www.kimbridgerestaurant.co.uk)  
[kimbridgerestaurant@gmail.com](mailto:kimbridgerestaurant@gmail.com)

### Whist Drives at Mottisfont Village Hall.

Forthcoming dates for your diary:

Friday, 18th December at 7.30pm: The Christmas Special

Friday, 29th January

Friday, 26th February

Friday, 18th March

Friday, 29th April



Admission £2.00 including refreshments...

...and there's a fantastic raffle!

Gordon & Cathie, 340129

### Art Group

We meet throughout the year on Thursdays, from 2pm to 4pm at the Village Hall.



Warm and very welcoming, with refreshments.

None of us can draw or paint, but we enjoy trying!

Gordon 340129

## Mottisfont Social Club

Mottisfont Social Club welcomes families, and offers a friendly face and reasonably priced bar. We have a range of giant games for children, and for the adults there is a choice of a snooker table, pool table, five dart boards, skittle alley, adequate parking and a garden for the warmer weather. The club is very well situated in the heart of the village and members can take advantage of the premises as a free venue for their birthday parties and family celebrations - come in and ask for details.

### WHAT'S ON AT THE CLUB

- **5th DECEMBER - CHRISTMAS MEAT DRAW** A large selection of meat to win for Christmas, all supplied by Owtons of Kimbridge
- **12th DECEMBER - CHILDREN'S CHRISTMAS PARTY** This is open to children up to the age of 12 who live in the parish or whose parents are Social Club members. Please contact Tracy Shepard on 341939 or Catherine Jenkins on 340922 to book your place.
- **NEW YEARS EVE - DISCO AND KARAOKE EVENING** Come and have a dance and sing along to see in the new year.

We now have a Karaoke machine so if you like a sing-song look out for advertised dates or arrange your own evening.

The Club is open every evening between 7pm until 11pm (Sunday 10.30pm) and Sunday lunchtime 12.00pm until 2.00pm.

12th DECEMBER

## CHILDREN'S CHRISTMAS PARTY

at the Social Club

### The Dowse Trust

The Dowse Trust is a long-standing charity set up to promote the education, including social and physical training, of persons under the age of 25 years in the area of Mottisfont, Bossington and Broughton. The trust is able to help with providing financial assistance for items such as uniform, clothing, tools, instruments, books or educational visits to help youngsters at school, college, university, or any other educational establishment, to prepare for a profession, trade or calling.

The next meeting of the Dowse Trust is expected to be in March. The deadline for applications will be confirmed in the February edition of the *Acorn*.

Application forms are available at St. Mary's Church Broughton, Mottisfont Church, and from Broughton Primary School, or by email from the secretary, tinastuart1(spam-foiler)@gmail.com (leave out the spam-foiler!).

### Who's Who, What's What and Where's Where in Mottisfont & Dunbridge

|                                                    |              |                       |        |                               |                                                               |                         |        |
|----------------------------------------------------|--------------|-----------------------|--------|-------------------------------|---------------------------------------------------------------|-------------------------|--------|
| <b>Acorn</b>                                       | Editors      | Peter & Julia Barnett | 340793 |                               |                                                               | Andrew Simmonds         |        |
| <b>Acorn Community Pre-School</b>                  | Supervisor   | Danae Matthews        | 342441 |                               |                                                               | (mottisfont2@gmail.com) |        |
|                                                    |              |                       | 07860  | <b>St. Andrew's Church</b>    | Rector                                                        | Rev. Ron Corne          | 340793 |
|                                                    |              |                       | 662685 |                               | Curate                                                        | Rev. Gill Nobes         | 341010 |
| <b>Allotments (Dunbridge)</b>                      |              | Kim Bown              | 342204 |                               | Reader                                                        | Gina Livermore          | 388433 |
| <b>Art Group</b>                                   |              | Gordon Wood           | 340129 |                               | Wardens                                                       | Susan Clutterbuck       | 340475 |
| <b>Cricket Club</b>                                | Secretary    | Steve Godwin          | 07801  | <b>Social Club</b>            | Chairman                                                      | Trish Armstrong         | 341120 |
|                                                    |              |                       | 522979 |                               | Secretary                                                     | Peter Simmonds          | 340891 |
| <b>History Group</b>                               |              | Michael Horne         | 340105 |                               | Steward                                                       | Peter Holmes            | 340521 |
| <b>First Responders</b>                            | Coordinator  | Marion Gray           | 341370 | <b>Test Valley Councillor</b> |                                                               | Linda Holmes            | 340521 |
| <b>Football Club</b>                               | Secretary    | Alan Stewart          | 340492 | <b>Village Bus</b>            | Secretary                                                     | Ian Jeffrey             | 388872 |
| <b>Hampshire County Councillor</b>                 |              | Andrew Gibson         | 01264  |                               | Bookings                                                      | George Vaughan          | 301045 |
|                                                    |              |                       | 861138 |                               | Private Hire                                                  | Pam Dawkins             | 301203 |
| <b>Kimbridge Restaurant &amp; Annie's Tearooms</b> |              | Allan Gray            | 340777 | <b>Village Hall</b>           | Operations                                                    | Julie Smith             | 301470 |
| <b>Member of Parliament</b>                        |              | Caroline Nokes        | 512132 | (Reg.Charity                  | Chairman                                                      | Peter Broome            | 301506 |
| <b>Mill Arms</b>                                   |              | Kaye and Richard      | 340401 | (No. 291629)                  | Secretary                                                     | Lynn Young              | 340134 |
| <b>Mottisfont Abbey</b>                            | Gen. Manager | Paul Cook             | 344001 | <b>W.I.</b>                   | Bookings                                                      | Jenny Wineberg          | 340843 |
| <b>Neighbourhood Watch</b>                         | Mottisfont   | Alan Earthrowl        | 341799 |                               | Secretary                                                     | Tony Stemp              | 340398 |
|                                                    | Dunbridge    | Cliff Astur           | 341922 |                               | Press reporter                                                | Cathie Wood             | 340129 |
| <b>Parish Council</b>                              | Clerk        | Sue Holder            | 340130 | <b>Police</b>                 | Village                                                       | Mary Batten             | 514384 |
|                                                    | Chairman     | John Millns           | 340347 |                               | (request to be put through to Romsey to speak to Joanna Cole) | Joanna Cole             | 101    |
|                                                    | Councillors  | Jeff Channing         | 340555 |                               | Non-emergency calls                                           |                         | 101    |
|                                                    |              | Gareth Jenkins        | 340922 |                               |                                                               |                         |        |

The Acorn is also available at [www.theacorn.org.uk](http://www.theacorn.org.uk), where you will also find links to local schools, pubs, trains, council, church, WI and more

Mottisfont & Dunbridge Acorn is edited and published by Peter & Julia Barnett, Dunelm House, Barley Hill, Dunbridge, Romsey, SO51 0LF, telephone: 01794 340793, acornnews@mandercom.co.uk, with assistance from the National Trust, Kimbridge Restaurant and the Mottisfont Social Club. Opinions expressed in The Acorn are not necessarily those of the editorial team. We do our best to ensure the accuracy of items in The Acorn, but we will not be responsible for the consequences of errors or omissions. You should check with organisers of events in case there are last minute changes. © Mottisfont & Dunbridge Acorn, 2015.