



## Hampshire Superfast Broadband: Disappointment for Mottisfont and Dunbridge

Hampshire County Council has recently published a map showing the areas prioritised for installation of superfast broadband, and the news for Mottisfont and Dunbridge is not encouraging. Of the three categories shown, we are in the one with the longest delay: "area to be investigated as part of the programme to reach 95%+ by 2017". There appears to be no guarantee that we will have access to superfast broadband even in four years time!

The maps are available via the HCC web site at <http://www3.hants.gov.uk/broadband>.

### Sign-up campaign

The HCC web site also mentions their campaign to get people who are interested in having superfast broadband to sign up, as a means of confirming demand. Signing up does not commit you to taking the service if and when it arrives, but showing strong demand might bring the area up the priority list.

If you haven't signed up already, we encourage you to visit the site and do so!

Romsey Deanery Shoebox Service

for

## OPERATION CHRISTMAS CHILD

Sunday, 17th November, 3.00pm

St John's Church,  
Lockerley, SO51 0JJ

Bring your friends, families and  
your gift-filled shoeboxes to our  
annual Deanery service.

Followed by refreshments.

For more information please  
contact:

Julia Barnett on 340793  
or James Pitkin on 340635



Samaritan's Purse, Operation Christmas Child Charity Number 1001349  
[www.samaritans-purse.org.uk](http://www.samaritans-purse.org.uk)

## Children's Christmas Party

This year's Children's Christmas Party will be held on 14th December at 1.30pm, with entertainment, food and a visit from Santa! All children up to 12yrs old from the village or associated with a member of the social club will be welcome.

Please ensure that your child's name is registered before Sunday, 10th November, by calling Tracy on 341939 or Catherine on 340922, or by adding names to list on the notice board of the Social Club.

As usual the Club is providing the premises and the entertainment free of charge. All we ask of the families of the village is to bring along a plate of food or some Christmas crackers.

## LANTERN MAKING WORKSHOP

MOTTISFONT VILLAGE HALL  
Saturday 9th and Saturday 16th November  
10am to 1pm

On the first Saturday we will be making lanterns and returning the following week to add decorations. If you are not able to come to the first workshop, please come along on the following Saturday and you will still be able to make a lantern.

The lanterns can be of any size, made with willow supports and covered with cling film and tissue paper illuminated by LED torches. They can be painted and decorated to your own design and are not difficult to make.

All materials will be provided. There will be a small charge of between £4 and £5. Everyone will be welcome: Mums and Dads, children, grandparents and friends.

The lanterns will be carried in the Romsey Lantern Parade on Friday 6th December, which coincides with the town's late night shopping.

For further information, to register your interest, or to sign up please contact:

Gordon at [david.gordon@mottisfont.plus.com](mailto:david.gordon@mottisfont.plus.com), or 340129

Pat & Dave at [pwfrancis@hotmail.co.uk](mailto:pwfrancis@hotmail.co.uk), or 340609  
Shelly at [shellyhm@btinternet.com](mailto:shellyhm@btinternet.com)

**The deadline for inclusion of items in the DECEMBER edition of the Acorn is 16th November.  
Please email items to [acornnews@mandercom.co.uk](mailto:acornnews@mandercom.co.uk).**

## Parish Council News

### Police Report

The police have no information regarding the recent theft of the Mottisfont village signs. It is suspected that they were taken for their aluminium content, and the scrap yards have been checked. Hampshire County Council will be replacing the signs.

Rural dwelling burglaries are on the increase, with a cat flap being used recently to gain entry into a house. Houses have been targeted at the weekend which is unusual.

The speed of traffic on the B3084, Hatt Hill, was reported by the council to be an increasing problem particularly early in the morning and evening. PCSO Cole responded that there was nowhere on this road for police vehicles to park and record the traffic, however she would request to have a data box installed here for a week to determine the extent of the problem.

Theft of oil is increasing again, with Lockerley church being a target recently.

### Bend past Mottisfont Social Club

The council are concerned for the safety of walkers in the village centre because there is no footpath on the bend near the Social Club. The council will be discussing further with Hampshire Highways.

### Free Electric Blanket Testing

TVBC are offering a free electric blanket testing service again this year. Last year over half of the blankets tested failed the test.

### Barley Hill Footpath

Design work has recently started on the Barley Hill footpath project, with work commencing very early in 2014.

### Dunbridge Phone Box

The phone box at Dunbridge will be removed at some point by BT due to a lack of usage.

### Date of our next meeting

7.30pm on 27th November. Everyone welcome.

### Dunbridge Telephone Service Breakdown

Many residents in Dunbridge recently suffered a failure of their telephone service, which left some without a service for over six weeks. The parish council would like to take this further, but we need to know:

- ◆ How many residents had problems?
- ◆ How long were you cut off?
- ◆ Which telephone company are you with?

Councillor Jacquie Horne is collating this information, so could you please contact Jacquie if the above questions are relevant to you, on 340105, or e-mail [hornes@btinternet.com](mailto:hornes@btinternet.com)

## It's beginning to look a lot like Christmas at Mottisfont...

I hate to say the word so early, but Christmas is definitely on our radar here at Mottisfont. With so much going on, we thought we would take this opportunity to fill you in.

Our Christmas at Mottisfont is called The Swan Queen's Ball. It opens on 1 December and closes on 5 January, 2014. Basically, you will find:



- ◆ Trees decorated by artists around the grounds;
- ◆ The Winter Garden in full bloom;
- ◆ Our new exhibition "Talons and Tiaras" by Kate Plumtree;
- ◆ A magical quest trail for the kids, plus indoor activities such as masquerade mask making;
- ◆ Scrumptious festive treats in our café including special Christmas lunches and Christmas Afternoon Tea.

Also, on the weekends throughout December, the Swan Queen's glamorous assistant is hosting informal dance classes, suitable for the whole family – come and shake a tail feather with us!

And if you are looking to get outdoors to burn a few calories before Christmas begins, we have a winter walk around the estate with one of our rangers on Saturday, 23 November at 10am. Tickets are £7, so grab your winter coats and bring the family along for a brilliant day out!

For our full listings of events, just visit [www.nationaltrust.org.uk/mottisfont](http://www.nationaltrust.org.uk/mottisfont)  
To book, just call 344020 or visit our website.

*(Continued from page 7)*

Clarendon Way with the start point being Broughton. Lunch will be at Winterslow with return to Mottisfont by train.

Please bring appropriate walking boots or shoes and wet weather gear just in case. Warm clothing will be a must. 1 litre of water is also suggested, and energy bar(s).

Further details from Alan Groves at [alan@batty.plus.com](mailto:alan@batty.plus.com), or 341301, and Gordon Wood at [david.gordon@mottisfont.plus.com](mailto:david.gordon@mottisfont.plus.com), or 340129.

## THE HIGHS AND LOWS OF TEN YEARS AT WESTMINSTER

by Sandra Gidley, 27th November

It was a decade perhaps best remembered for terrorism, Middle East wars and economic boom and bust, and throughout it the Romsey parliamentary constituency was served by popular Liberal Democrat MP, Sandra Gidley.

Among her other appointments, Sandra was party spokeswoman on women's issues and older people, and she chaired the Gender Balance Task Force, an initiative to get more women into politics.

Sandra has kindly agreed to give us her personal impressions of Westminster from her first days as a new MP to May 2010 when she lost her seat. She will talk about the best times, the difficult times, the people she met, the decisions she made, her successes and failures, and the lasting influence that being an MP has had upon her.

Join us at the Village Hall, Broughton at 8:00pm (doors 7:30pm). Price £3 to include snacks and wine.

### Lockerley Primary School

Will your child be 4 years old between 1st September, 2013, and 31st August, 2014? If so, you need to apply for a school place. From 1st November, 2013, you can apply online at [www.hants.gov.uk/admissions](http://www.hants.gov.uk/admissions). Application deadline is Wednesday, 15th January, 2014.

**New website** We are pleased to announce that we have a new website at [www.lockerleyprimary.co.uk](http://www.lockerleyprimary.co.uk). Visit to find out more about our school and the amazing things we get up to.

**Fashion Show ~ Saturday 16th November at Lockerley Primary School** Doors open at 6pm for beauty treatments (please book in advance) and fashion accessories. Why not come early and treat yourself! The fashion show starts at 7.30pm, featuring Animal, Scats, Mistral, Foxy Lady and Ettiket. Tickets £10 per adult and £5 for primary school age children, to include a drink and canapes on arrival. There will also be a bar and a raffle.

This is a fundraising event by Friends of Lockerley School. We look forward to welcoming you for a fun packed evening. This is a very popular event so to avoid disappointment please book your tickets now! If you would like to book a table, tickets or find out more, please contact the school office on 340485, Linda on 341572 or Beccy on 341266.

**Lockerley Primary School Christmas Fayre ~ Friday 6th December 6 - 8pm** Craft stalls, tombola, raffle, children's games, bar and winter barbecue. There will also be a very special visitor in the Grotto!

If you would like to book a stall please contact the school office on 340485.

## MOTTISFONT & DUNBRIDGE W.I.



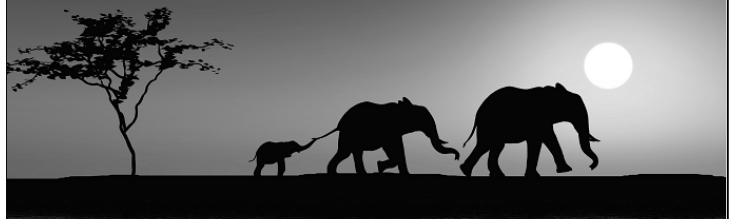
The October meeting was well attended and the speaker was Anthony Raper, who told us all about the interesting history of Weyhill Fair. Most of us didn't realise that this dated back to the reign of Henry III, and the sheer size of the land that this covered. Sheep, cattle, horses, hops, cheese and many other commodities were brought from all over the country to be sold at the fair, which lasted 10 days at Michaelmas each year.

September was a busy month for the branch. At Romsey Show we were awarded first prize for our entry of a "Design for a Tattoo". We also held a successful Apple Pie & Coffee morning, and a donation from this is to be given to Jane Scarth House.

Our next meeting is on Tuesday, 12th November at 7.30pm in the Mottisfont & Dunbridge Village Hall. The speaker will be Richard Lewis, who is bringing along his ferrets to show as and demonstrate how ferrets can be fun. This is to be an open meeting and visitors and guests will be made very welcome to enjoy this presentation, have a cup of coffee or tea and biscuits, and a friendly chat.

Mary Batten

Friends of All Saints Church, Houghton. In aid of the restoration of the church bells.



## Win an AFRICAN SAFARI Holiday for Two!

### SAFARI RAFFLE

A Safari package in ZAMBIA for TWO PEOPLE. Kindly donated by [nungusafaris.com](http://nungusafaris.com) in conjunction with [wilderness-safaris.com](http://wilderness-safaris.com)

This amazing prize for two people valued at £6,500 includes:

- Return airfares - London/Johannesburg/Livingstone (Zambia)
- Two nights at Toka-Leya Lodge, on the Zambezi river, close to Victoria Falls
- Three nights at Busanga Plains camp, in the game-rich Kafue National Park

The five days are fully inclusive of all transfers and flights, accommodation, game drives etc (excludes gratuities for guides)

To be taken mid June - mid August, or October 2014 (these dates provide the best periods for game viewing in Zambia)

Draw will take place at the Boot Inn, Houghton, December 6th at 7.30pm

Tickets only £50

**Do not miss this opportunity for an amazing holiday and experience for TWO PEOPLE**

**For tickets contact:**

**Julie Moldon 01794 388204**

**Bob Gosse 01794 388617**

NUNGU  
AFRICAN SAFARIS

WILDERNESS  
SAFARIS

Dear Friends,



As the days shorten and the first frosts of the autumn form, it's easy to forget the beautiful blue skies of that lovely hot, dry summer we just enjoyed. I cherish fond memories of days spent in the sun and I'm hoping that they will cheer me up as it gets darker, colder and wetter!

That's enough of looking back! Ron and I have been looking forward and doing some "blue sky" thinking: dreaming a few dreams, consulting and planning for the coming year.

We will be adopting a new pattern of services for the Benefice from 1st January, including new family services in Houghton. These services will be informal and we hope to welcome people of all ages.

We will be starting a new Sunday Club for children in Broughton, led by Helen Armstrong.

We are looking at our pastoral visiting too, and hope to create a team of pastoral visitors to go out to those who would like a visit at home.

On Saturday, 11th January, Phil Dykes, Winchester Diocese Adviser for Adult Discipleship, will be leading a Benefice Day - "Planning for the future, growing together". We would love you to come and be a part of this day as we think about Christ's

vision for the Church and the part that we all have to play in it.

Call either Ron or me on the numbers below if you would like to come along and contribute to our blue sky thinking on how we might all be a part of Christ's mission in the Benefice and the wider world.

Blessings,

Gill

The Benefice ministry team can be contacted on the following numbers:

The Revd. Ron Corne (Rector): 301287  
 The Revd. Gill Nobes (Curate): 341010  
 Mrs Gina Livermore (Reader): 388433

You are invited to join in  
**FAMILY FRIDAY**  
 All ages welcome!

Lockerley & East Dean Memorial Hall,  
 Friday 15 November, from 3.15pm onwards  
 (snacks at 4pm). The afternoon finishes at 5.15pm.

Based on Messy Church ideas, we invite children to bring an adult (mum, dad, grandparent – or all!) to join us for creative activities, stories and music.

The event is free but donations are welcome.

For further details please contact Christine 341731

**SUNDAY BENEFICE CHURCH SERVICES FOR NOVEMBER**

Time	3rd November ALL SAINTS	10th November REMEMBRANCE	17th November TRINITY 25	24th November CHRIST THE KING
8.00	Broughton HC CW	Broughton HC (BCP)	-	-
9.30	Bossington HC (BCP)	In each of Broughton, Houghton and Mottisfont: <u>Service of Remembrance</u> 10.45am	Mottisfont HC (BCP)	Broughton, 10.30am for the Benefice: <u>Service of Confirmation</u> taken by Bishop John Dennis
11.00	Mottisfont Matins	-	Broughton HC CW and Coffee Club	-
6.00	Houghton Commemoration of the Faithful Departed	-	Houghton Evensong	-

Every Wednesday: 9.30am, St. Mary's Church, Broughton - Holy Communion (BCP)  
 BCP - Book of Common Prayer CW - Common Worship

## Special things to note for November

### Sunday, 3rd November, 6pm, All Saints Church, Houghton

Please join us as we remember our loved ones who have died. During the service there will be an opportunity to light a candle in their memory, if you wish.

### Sunday, 10th November at 10.45am

There will be a Service of Remembrance at each of our three parish churches on this day: Broughton, Houghton and Mottisfont.

### Sunday, 24th November, Confirmation Service at St. Mary's, Broughton, at 10.30am

We shall be welcoming Bishop John Dennis as he comes to confirm the following from our benefice:

David Boardman, Garry Hedley, Arthur Jarrett, Peter and Sandra Kennesion, Alec Welland.

Please pray for them as they prepare for this important day.

Gina Livermore

## Romsey Deanery Pre-Advent Course

Wednesdays 13th, 20th, 27th November,  
and 4th December

### Growing as Disciples of Jesus

In these four sessions we will explore together what it means to be a disciple of Jesus, how we can grow in our faith in him and how we can respond to his call to share in his mission in the world.

Speakers will include Bishop Jonathan, Revd. Sally Dakin, and Revd. Tim Sledge.

Venue: Poppies, Choice Plants,  
Timsbury, SO51 0NB  
Time: 7.30 – 9.30pm  
Plenty of parking available

Each evening will include input, discussion, interaction, refreshments and fun!

This course is an opportunity for church members from across the Deanery to come together, in line with our Deanery Vision.

Advance indication of numbers attending will be helpful: please email  
[braishfieldbenefice@gmail.com](mailto:braishfieldbenefice@gmail.com)

## BROUGHTON BRIGHT HOUR

Thursdays at 2.30pm in the New Room at St. Mary's Church, Broughton

### Events for November

7th November: Mrs. Ann Ridout  
14th November: Mrs. Linda Milburn  
21st November: David Sullivan  
28th November: Mrs. Sally Josling

Everyone welcome. Please come and join us.

Barbara Perry, Booking Secretary, 301466

### 80th Anniversary Celebration

On 10th October in Broughton Village Hall, 86 people met together to celebrate the 80th anniversary of Bright Hour. This is a tremendous achievement for a local Christian group that meets weekly for people of Broughton, and the surrounding towns and villages.

In 1933, Kathleen Wardle, the Baptist minister's wife, started the fellowship for young mums and women who wanted to hear the good news of Jesus in a midweek group. Ethel Davis was a founder member and encouraged many people to join. When the Baptist Church in Nether Wallop closed, Joan Frampton brought her group to Broughton. Then with the closure of Stockbridge Baptist Church the fellowship from there joined with people from St. Peters, C of E Church, Stockbridge. Bright Hour continued in the Baptist Church until 2004 when the Baptist Church closed. The group then met in Broughton Village Hall. The group now had a much younger fellowship and began to visit many places, including St. Paul's Cathedral, Alton Abbey, Christchurch Priory, The Ship Doulos, and even sang hymns on the Alison Macgregor on Southampton water. When the meeting room at St. Mary's Church was completed, Bright Hour moved there. By now it had become an inter-Denominational group inclusive of everyone.

It continues today with weekly meetings, with both men and women speakers, who bring their messages, tell of their charities work, and share their faith with the group. We have a time of fun, laughter, and praise as well as fellowship and learning more about God's Word, and Jesus.

So on 10th October the hall was filled with laughter, and singing. We saw a film of the places that Bright Hour has visited, and representatives from ten charities showed a little of their work. Also we had a lovely tea and celebration cake. We are encouraged that Bright Hour has continued for 80 years and for the commitment of the people who help us. The group is open to men and women of all ages and meets weekly at 2.30pm. If you would like to know more about Bright Hour or would like to join us, please contact Ann Ridout on 01980 862232.

## GET FIT - KEEP FIT!

Join Mary Grimshaw's weekly (during term time) exercise class to improve your all-round fitness and stamina. This relaxed class is suitable for all ages and stages of fitness and includes elements of Pilates, dance and other exercises.

Place: Lockerley Memorial Hall  
Time: 8pm  
Cost: £3 per session

For more details contact Mary Grimshaw on 340223.



## WALKING GROUP

Our next monthly walks will be:

- ▶ Friday, 8th Nov. Circular walk, 8 - 9 miles, West Tytherley to Middle Winterslow. Pub lunch at the Lord Nelson. Car share, departing 10am.
- ▶ Friday, 13th Dec. Pre-Christmas walk around Hinton Ampner N.T. and Cheriton. Pub lunch at the Flowerpots. Car share, departing 9.30am.
- ▶ Friday, 10th Jan. Winchester and the Itchen. Pub lunch. Depart by train at 10.14am.
- ▶ Friday, 13th Feb. Still at the planning stage. Maybe snowshoeing up the north face of Pepperbox Hill?



No winter blues with us.

Gordon 340129

## MOTTISFONT CRAFT CLUB

We're a lively and fun group who meet every Wednesday in the Village Hall from 1-3.30pm.

Whether you are new or experienced, everyone is welcome. If you're new to crafting and need supplies provided, it's £4, or £2 if you bring your own supplies. Refreshments are included.



To see for yourself how much fun we have, go to [www.mottisfontcraftclub.co.uk](http://www.mottisfontcraftclub.co.uk).

Contact Shelly on 341519, or email me at [shellyhm@btinternet.com](mailto:shellyhm@btinternet.com)

## Eternal Bloom Course

One day course in making exquisite paper blooms that will never die. Saturday, 30th November, 10-4pm at Mottisfont Village Hall. £15. Limited places available. Please call Shelly on 341519 or email me at [shellyhm@btinternet.com](mailto:shellyhm@btinternet.com)

## What's on at the Mill Arms

**Friday 15th November** Your chance to enjoy another **pie evening**, buffet style, so have as much or as little as you like.

- ◆ Pork, mustard and cider with cobbler topping
- ◆ Chicken, leek and mushroom with shortcrust
- ◆ Creamy fish and egg pie with herb mash
- ◆ Steak and kidney with suet crust

All served with lots of chips and rich gravy, just the way they should be. £12.50pp - eat as much as you like!

### Thursday night is Curry Night, 6-9pm

3 different curries to choose from every week at £5, then you can add as many of your favourite extras as you like to make it your own.

- ◆ Chicken bhuna (mild)
- ◆ Beef Madras (med)
- ◆ Thai green vegetable (med)

Extras (all £1): Basmati rice, poppadoms, onion salad, mango chutney, lime pickle, nan bread, Bombay potatoes.

A great value night out on cold Thursdays evenings. Who needs an excuse to meet up with family and friends!?! Phone or email Lee or Andrea to book!

[millarms@btconnect.com](mailto:millarms@btconnect.com), 340401



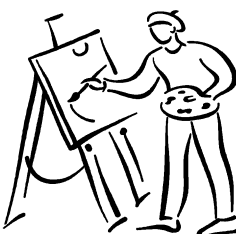
## Broughton Firework Display Tuesday 5th November

This fantastic annual family event will once again be held on 5th November, commencing with a torch procession from The Square in Broughton at 6.30pm. The bonfire will be lit at 6.45pm and a fabulous firework display runs from 7.30pm.

Tickets are just £4.50 for children and concessions, and £5.50 for adults. Refreshments, licensed bar and merchandise for sale. Free parking in Buckholt Road.

## Art Group at the Village Hall

Come rain or shine, we meet every Thursday afternoon, 2pm - 4pm at the Village Hall. It's not too serious, but masterpieces **are** produced regularly!



Tea, coffee and biscuits provided.

Gordon 340129

# KIMBRIDGE RESTAURANT

## Winter Vegetable Crumble

This recipe serves 4/6 persons.

### Ingredients:

2 parsnips  
1 small leek  
1 small turnip  
1 small celeriac  
100 grams of runner beans  
(trimmed and sliced on an angle)  
1 vegetable stock cube  
300ml of double cream  
1 teaspoon of minced garlic  
1 teaspoon of paprika  
50 grams of chopped parsley  
Salt and pepper  
150 grams of plain flour  
50 grams of butter  
250ml of vegetable stock



*Kate Buchan,  
Sous Chef  
at Kimbridge  
Restaurant*

### How to make it:

Pre-heat the oven to 200C/gas 6/fan 180C.

Slice the leeks and the celeriac, and place together in a saucepan with the garlic and the paprika. Lightly cook for a few minutes. Peel and cut the parsnips into cubes and also the turnip, then add to the pan. Add the stock cube and enough water to just cover the vegetables, and cook until all are just tender. Next, add the runner beans and simmer for a few minutes so that they soften slightly.

Now add the cream and let it reduce slightly. Take off the heat and place the vegetable mix into an oven proof dish. Set aside while you make the topping.

For the crumble topping, rub the butter into the flour, with a pinch of salt and pepper. Once all rubbed through, add the chopped parsley and spread the mix over the top of the vegetables.

Place in the oven and cook for 10-15 minutes or until golden brown.

## Whist Drives at the Village Hall

Our Whist Drives are usually on the last Friday of each month until April. The next two are Friday, 29th November, and a special Christmas one on Friday, 20th December. All start at 7.30pm.

Wonderful prizes, raffle and refreshments.

John Jenkins, 301614, Gordon Wood, 340129

## What's on In November

- ▶ Friday 1st: Fish Fryday, home battered cod and chips, £8.95
- ▶ Friday 1st: A La Carte Hampshire Fayre Dining Experience
- ▶ Saturday 2nd: Family evening, children's menu free
- ▶ Friday 8th: Fish Fryday, home battered cod and chips, £8.95
- ▶ Friday 8th: A La Carte Hampshire Fayre Dining Experience
- ▶ Saturday 9th: Family evening, children's menu free
- ▶ Wednesday 13th Kimbridge Quiz + Buffet Evening, £7.95
- ▶ Friday 15th: Fish Fryday, home battered cod and chips, £8.95
- ▶ Friday 15th: A La Carte Hampshire Fayre Dining Experience
- ▶ Saturday 16th: Family evening, children's menu free
- ▶ Wednesday 20th First time on stage acts (if you want to come and sing or play an instrument, let us know, and you receive £1 per customer) + buffet evening, £8.95
- ▶ Friday 22nd: Fish Fryday, home battered cod and chips, £8.95
- ▶ Friday 22nd: A La Carte Hampshire Fayre Dining Experience
- ▶ Saturday 23rd: Family evening, children's menu free
- ▶ Wednesday 27th DC Solo Sax + hot Xmas buffet evening £9.95
- ▶ Friday 29th: Fish Fryday, home battered cod and chips, £8.95

If you would like to be added to our mailing service, send your email address to [kimbridgerestaurant@gmail.com](mailto:kimbridgerestaurant@gmail.com) or phone 340777 or 340556

## Mottisfont Sunday Walking Group

Starting January 19th, meet at village hall at 9:30.

As an extension to the Friday walking group, we plan to organise monthly Sunday walking groups mid-month. Walks will be typically 6hrs duration. Lunch will be either packed, or pub if en route.

The first three walks will be local, and we will need to pool cars to ensure the start and end points can be arranged as required. We also hope to organise walks further afield, for which suggestions are welcome.

We are planning that January and February will cover from Salisbury to Winchester via the

*(Continued on page 2)*

## Mottisfont Social Club

Mottisfont Social Club welcomes families and offers a friendly face and reasonably priced bar. We have a range of giant games for children, and for the adults there is a choice of a snooker table, pool table, 5 dart boards, skittle alley, adequate parking and a garden for the warmer weather. The club is very well situated in the heart of the village and members can take advantage of the premises as a free venue for their birthday parties and family celebrations - come in and ask for details.

### What's On

Mondays	Ladies Darts, Snooker
Tuesdays	Billiards
Wednesdays	Closed
Thursdays	Bingo, Crib
Fridays	Men's Darts, Thrift Club
Saturdays	Occasional entertainment
Sundays	Skittles

**23rd November - Uncle Tom's Cobleys** Uncle Tom's Cobleys specialise in covers of popular rock, pop, ska, folk, country and even metal tunes using just an acoustic guitar, a fiddle or a banjo and the odd kazoo! They've been known to liven up many a quiet night at the local with their upbeat, rousing versions of popular classics - ancient and modern. Fuelled by the local ale and the love of the unexpected, it's never a dull moment when the boys are in town... whether you're in awe of the speed of the fiddle or stunned by the sheer audacity of the song choices, you're sure to go home with a spring in your step and a smile on your face.

**7th December - Christmas Meat Draw** Tickets will be on sale soon

**14th December 1.30pm - 3.30pm - Children's Christmas Party** for all children up to the age of 12 yrs associated with Mottisfont Social Club's members or children who live in the village. Please ensure that you have registered your children's names with Tracy on 341939 or Catherine on 340922 before Sunday, 10th November.

**14th December - Eve - Grand Christmas Draw.** Tickets on sale soon.

**31st December - New Year's Eve Party.** Invites to all members (non members entrance fee £2) Theme - Black Tie and Ball Gowns.

### Club Opening Hours

M/T/T/F/S	7pm till 11pm
Wednesdays	Closed
Sunday Lunchtime	Noon till 2pm
Sunday Evening	7pm till 10.30pm

## ARE YOU UNDER 25 YEARS OF AGE?

If you are, and you live within the ancient parishes of Broughton, Bossington and Mottisfont, you can apply for help with something needed for your education from The Dowse Trust. This could be: a musical instrument, school/college/university study material, a school trip or music lessons.

Grants are normally in the region of £50 to £200. The Trust meets every three months, but applications can be sent in at any time.

To get an application form you need to contact the secretary: Mrs. Christine Hoskins, Fripps, High Street, Broughton, SO20 8AD, or by email to: [hoskins12@btinternet.com](mailto:hoskins12@btinternet.com)

## Who's Who, What's What and Where's Where in Mottisfont and Dunbridge

<b>Acorn</b>	Editors	Peter & Julia Barnett	340793				
<b>Acorn Community Pre-School</b>	Supervisor	Danae Matthews	342441	<b>St. Andrew's Church</b>	Rector	Revd. Ron Corne	301287
			07860		Curate	Revd Gill Nobes	341010
			662685		Reader	Gina Livermore	388433
<b>Art Group</b>		Gordon Wood	340129		Wardens	Susan Clutterbuck	340475
<b>Cricknet Club</b>	Secretary	Edwin Moody	514197	<b>Social Club</b>	Chairman	Trish Armstrong	341120
<b>History Group</b>		Michael Horne	340105		Secretary	Peter Simmonds	340891
<b>First Responders</b>	Coordinator	Marion Gray	341370		Steward	Tracy Holmes	341939
<b>Football Club</b>	Secretary	Alan Stewart	340492	<b>Test Valley Councillor</b>		Linda Holmes	340521
<b>Hampshire County Councillor</b>		Andrew Gibson	01264			Neville Whiteley	01264
			861138	<b>Village Bus</b>	Secretary	George Vaughan	301045
<b>Member of Parliament</b>		Caroline Nokes	512132		Bookings	Pam Dawkins	301203
<b>Mill Arms</b>		Andrea & Ian Bentall	340401		Private Hire	Julie Smith	301470
<b>Mottisfont Abbey</b>	Est. Manager	Paul Cook	340757		Operations	Mike Howe	301723
<b>Neighbourhood Watch</b>	Mottisfont	Alan Earthrowl	341799	<b>Village Hall</b>	Chairman	Lynn Young	340134
	Dunbridge	Cliff Astur	341922	(Reg.Charity	Secretary	Margaret Astur	341922
<b>Parish Council</b>	Clerk	Sue Holder	340130	No. 291629)	Bookings	Tony Stemp	340398
	Chairman	John Millns	340347	<b>W.I.</b>	Secretary	Cathie Wood	340129
	Councillors	Jeff Channing	340555		Press reporter	Mary Batten	341262
		Jacque Horne	340105	<b>Police</b>	Village	PC John Viney	0845
		Andrew Simmonds					0454545
		( <a href="mailto:mottisfont2@gmail.com">mottisfont2@gmail.com</a> )			Romsey		0845
		Gareth Jenkins	340922				0454545
		Joyce Southwell					

The Acorn is also available at [www.theacorn.org.uk](http://www.theacorn.org.uk) where you will also find links to local schools, pubs, trains, council, church, WI and more.