



The Village Newsletter

Mottisfont & Dunbridge

ACORN



November 2012

Children's Christmas Party



**This year's party will be on
Saturday, 15th December,
2pm - 5pm.**

**We need you to call us to add
your child's name to the party
list ASAP.**

For those new to the village, welcome! Each year myself and Catherine Jenkins organise a Christmas party for all of the children aged 0 - 11 that live in Mottisfont/Dunbridge. We are lucky enough to have sponsorship from the village Social Club who allow us to join in with their celebrations for the members' children. We also need to thank the Village Hall Committee who have kindly donated money towards the party this year. This means that we have a

venue and entertainment free of charge! All that we ask is that you **call us to register your child** and bring along a plate of something tasty for the party table.

This year, in an effort to keep things local, Santa has asked Roundabout Toys in Romsey to supply the presents to him. In order for this new union to be successful, we will need names and numbers of those children wishing to attend by **1st week in November**. Please call Tracy on 341939 or Catherine on 340922, or pop into the Social Club to sign your child up.

Looking forward to seeing you there!

Tracy



COFFEE MORNING

**Friday, 30th November,
from 10am**

Mottisfont Village Hall

**COME ALONG AND
JOIN US FOR COFFEE
AND A CHAT**

**RAFFLE,
ART EXHIBITION &
BRIC-A-BRAC SALE**



**YOUR GARDENING PROBLEMS
SOLVED, WITH JOHN WOOD,
HEAD GARDENER,
NATIONAL TRUST HINTON AMPNER**

**JOAN NEWMAN
NURSE SPECIALIST**



All donations to the Red & White Appeal
For more information, contact Suzie Simmons on 023 8079 5221,
or suzie.simmons@uhs.nhs.uk

Registered charity no. 1051543

The deadline for inclusion of items in the December edition of the Acorn is 16th November.
Please e-mail contributions to acornnews@mandercom.co.uk.

Parish Council News

At our July meeting, Cllr. Andrew Gibson reported that Hampshire County Council has restructured the Highways Department and there is now only one Highways Engineer, John Clark, covering Cllr. Gibson's constituency, instead of the previous three. John covers 133 square miles. Cllr. Gibson is now holding a monthly meeting with the Director of Highways to discuss problems, making this his priority for the year. The poor value for money and service reportedly provided by Amey was discussed at the meeting.

The Council asked that the Barley Hill footpath be made a priority, which Cllr. Gibson agreed to progress once the work at the Station Goods Yard was completed. The Hatt Hill footpath was discussed but to no satisfactory conclusion.

The Lengthsman has spent two days edging Hatt Lane. The hedge here needs taking back after which Test Valley Borough Council will be asked to sweep the road.

The verges in the village centre need maintaining and it is hoped that Highways will undertake this work in the autumn as part of their second cut of the year routine. A new nameplate on Bengers Lane has been installed. Pot Holes on the Spearywell Road have been reported and another before 'Annie's' at Kimbridge was brought to the Council's attention at the meeting. The Lengthsman has moved the Parish of Mottisfont nameplate to the back of the Lockerley sign.

At our September meeting the Council welcomed Reverend Gill Nobes to the meeting. Reverend Gill Nobes has recently joined the ministry team increasing the available resources for pastoral visits, if required.

On Thursday, 15th November, for the first time ever, the people of Hampshire and the Isle of Wight will be asked to elect a Police and Crime Commissioner (PCC). The PCC will take office on 22nd November, and will be accountable for how crime is tackled in our police force area. Polling cards will be issued in October and will contain details signposting how to find out about the candidates in your area. For more information visit: www.homeoffice.gov.uk/police/police-crime-commissioners.

The Government is planning to localise Council Tax Benefit as part of its wider welfare reform programme, and has asked Councils across the country to develop local Council Tax Support schemes to be introduced by 1st April 2013. Test Valley Borough Council has launched a public consultation, which runs until Monday 12th November, to seek views on options for how the new scheme might work and on proposed changes to the rules on council tax exemptions and discounts on empty homes.

For more information and to complete the consultation survey, please go to this link: www.testvalley.gov.uk/resident/benefitsandcounciltax/counciltax/council-tax-support-consultation/

If you need any further information please contact Gill Cranswick, Head of Revenues (01264 368540) or Janice Broomfield, Revenues Services Manager (01264 368563).

Date of future meetings: 24th October and 5th December. Everyone welcome.

Clerk : Sue Holder 01794 340130

National Trust

New visitor entrance buildings, Mottisfont Abbey

We are about to submit the planning application to build a pair of buildings to replace the current thatched hut that functions as our entrance kiosk for visitors to Mottisfont Abbey. We'd welcome the opportunity to show the proposals to local residents in Mottisfont and Dunbridge, to see what you think about them before they are finalised by the architects and sent into Test Valley Borough Council for consideration.

We have a scale 3-D model and drawings available of the project, and will be on hand with these from 6.00 - 8.00pm on Monday, 19th November, in

Mottisfont village hall. Do come along to have a coffee and look at the proposals, but if you can't make it on this date, do let us know and we'll arrange a convenient alternative time.

We must stress that this informal invitation to discuss the project prior to the submission for planning permission does not in any way hinder you from commenting on the proposals in the normal way as part of the planning process.

We look forward to seeing you.

Alison Evans, General Manager

MOTTISFONT & DUNBRIDGE W.I.



We were joined by several visiting members from other WI groups to listen to a fascinating talk by Mrs. Avril Outen on her life as a Tiller Girl. Avril joined the Tiller Girls at the London Palladium as part of a troupe of 16 girls. It was quite a hard regime but great fun for the princely wage of £8.00 per week. After leaving the Tiller Girls, Avril joined the staff of The Cloud Hotel as a washer-up where she met her husband. Sadly he died in 1991 and Avril decided to take on the responsibility of the hotel and has made a great amount of alterations.

In 1995 she was awarded Hampshire Business Woman of the Year, in 2006 Shine Woman of the Year, in 2008 an MBE for her Service to Hospitality & Charity work and in 2011 she was listed in 100 Most Influential Women.

Avril's message to all women is 'Women have talent – be passionate to reach your full potential – follow your dreams.'

The next meeting will be on Tuesday, 13th November, at 8pm when the speaker will be Mrs. Gina Ireland MBE, giving an insight into the lives of female prisoners, entitled 'Twisted Life, Females in Prison'.

Guests will be very welcome.

Mary Batten

Romsey Rural Police Report

Recently we have been getting increasing reports of diesel thefts including red diesel from farm vehicles, commercial vehicles and lorries, etc. Also there have been a number of farm out-building/barns and shed break-ins.

We ask and advise you all to make your buildings and the contents as secure as possible, either by reinforcing with additional panels to the internal structure or where possible fit grille, heavy wire mesh or strong perspex at windows.

- ▶ Strengthen the door frame and secure with coach bolts or non-return screws with good shackle padlocks.
- ▶ Fit an alarm (battery powered if no mains electricity)
- ▶ Mark your property, using a UV pen or Smart Water. This gives a better chance of returning and identifying your property.
- ▶ Secure tools and ladders. Offenders will use your tools to break into your property if they can.
- ▶ Lighting: consider movement sensors, now the nights are longer, and think about where to install them to best effect.
- ▶ Park vehicles making it difficult to get between vehicles to syphon fuel out.

As always, if you see or hear anyone or a vehicle acting in a suspicious manner please report it on 101, or if a crime is taking place call 999.

Bus operator changing

Hampshire County Council has announced changes to bus contracts in the Mottisfont and Dunbridge areas.

From 4th November, Service 36, currently run by Wilts & Dorset, will transfer to Stagecoach under a new four year contract costing £102,072.

This service is part of the Romsey to West Dean route.

Train service update

Services run by South West Trains from Mottisfont & Dunbridge Station will remain unchanged when the new timetables comes into operation in December.

Andy Simmonds

Changes to Council Tax Benefit and Council Tax exemptions and discounts on empty homes

The Government is planning to localise Council Tax Benefit as part of its wider welfare reform programme and has asked councils across the country to develop local Council Tax Support schemes to be introduced by 1 April 2013. Test Valley Borough Council has launched a public consultation which runs until Monday, 12th November, to seek views on options for how the new scheme might work, and on proposed changes to the rules on council tax exemptions and discounts on empty homes.

For more information and to complete the consultation survey, please go to this link:
<http://www.testvalley.gov.uk/resident/benefitsandcounciltax/counciltax/council-tax-support-consultation/>

If you need any further information please contact Gill Cranswick, Head of Revenues (01264 368540) or Janice Broomfield, Revenues Services Manager (01264 368563).

Dear Friends



'Remember, remember the fifth of November, Gunpowder, treason and plot'. So goes the nursery rhyme that dates from the early eighteenth century. November is a month for remembering. As evenings draw in and fog and frost form, we look back fondly to our sunny Summer holidays (ok – maybe not so sunny for those who holidayed in the UK this year!).

In the Church calendar, November is a month where we stop and pause and remember. On the 2nd November, All Souls Day, at All Saints Houghton we have a Service of Memorial which begins at 7.30pm. This is a very special service where we can take a few moments to pause and reflect as we hear read out the names of our loved ones who have died, and we can light a candle as we remember them.

The theme of remembering continues when we commemorate Armistice Day on Sunday 11th November. Special Remembrance Services are being held at 10.45am at St. Mary's Broughton, All Saints Houghton and St. Andrew's Mottisfont. As we observe the two-minute silence, we remember the fallen from the World Wars of the Twentieth Century and those who have fallen in more recent conflicts.

We read in the Gospel of St. John that Jesus commanded his followers to 'love one another as I have loved you. No one has greater love than this, to lay down one's life for one's friends. You are my friends if you do what I command you'. Jesus' command to his followers is both intimate and compelling. Jesus offered himself as the model of self-giving love as he, Jesus, gave his life on the cross.

Although it's only November, everything is now gearing up for Christmas. What better time for us to take a little time out from our busy lives to be still, to remember and, most of all, to offer thanks for those that we have loved but see no more, for those who have given their lives for others and for Jesus Christ, who gave his life for us.

Please do come along to these special services and any of the other services in the Benefice churches this month.

Every blessing.

Rev'd Gill Nobes (Curate)

SUNDAY BENEFICE CHURCH SERVICES FOR NOVEMBER

Time	4th November TRINITY 22	11th November REMEMBRANCE	18th November 2nd BEFORE ADVENT	25th November CHRIST THE KING
8.00	Broughton HC (CW)	Broughton HC (BCP)	-	-
9.30	Bossington HC (BCP)	-	Mottisfont HC (BCP) Broughton Sunday Club	Broughton Family Communion (CW) Broughton Sunday Club
10.45	-	REMEMBRANCE SERVICE	-	-
11.00	Mottisfont Matins	-	Broughton HC CW and Coffee Club	Mottisfont Family Communion
6.00	Houghton Evensong	-	No evening service	Houghton HC (BCP)

Every Wednesday: 9.30am, St. Mary's Church, Broughton - Holy Communion (BCP)
BCP - Book of Common Prayer CW - Common Worship

Special things to note for November

Friday, 2nd November, All Souls' Day. 7.30pm, All Saints Church, Houghton. Please join us as we meet to remember our loved ones who have died and, if you wish, to light a candle in their memory.

4th November, All Saints' Sunday, 6pm, All Saints Church, Houghton. This will be a service to celebrate our patronal festival. All are welcome.

11th November, Remembrance Sunday, 10.45am. We shall be holding a service of Remembrance on this day in each of our parish churches: Broughton, Houghton and Mottisfont.

Sunday, 18th November. There will be no service of Evensong at All Saints, Houghton, today as we are all invited to a deanery service at Romsey Abbey at 6.30pm.

Advance notice for December

2nd December, Advent Sunday, 10.30am, St. Andrew's, Mottisfont. There will be a special service in church with Bishop John Dennis before we process to Mottisfont Abbey for the lighting of the Advent wreath. We are all kindly invited by the National Trust to refreshments following the ceremony.

Romsey Deanery Emmaus Week with Bishop Jonathan

18th-24th November

Deanery Events for All!

Sunday 18th November

3pm-4pm Deanery Shoebox Service, All Saints', Braishfield

6.30pm-8pm Deanery Service, Romsey Abbey

Thursday 22nd

7.30pm-9.30pm Questions of Faith,
Stockbridge Town Hall

Friday 23rd

9.00am Morning Worship + Coffee,
St Andrew's, Mottisfont

10am-12.30pm Deanery Walk, start at
Mottisfont Church

3.30pm - 4.30pm Afternoon Tea,
Sherfield English Village Hall

7pm-9pm Element Youth Event,
Broughton Village Hall

Saturday 24th

8.30am Parish Breakfast, Tally Ho, Broughton

Please come along!

BROUGHTON BRIGHT HOUR

Thursdays at 2.30pm in the New Room at
St. Mary's Church, Broughton

Speakers for November

1st: Mrs. Kitty Boxall (Tearcraft)

8th: Members Meeting

15th: Mrs. Linda Milburn

22nd: Mrs. Trish Burberry

29th: Rev'd Gill Nobes (Curate)

Everyone welcome. Please come and join us.

Barbara Perry, Booking Secretary, 301466

Samaritan's Purse: Operation Christmas Child

Christmas is just around the corner and preparation for this year's Operation Christmas Child shoebox appeal is moving on apace. Local schools, businesses and individuals are already busy wrapping and filling boxes to send to children and families living in difficult circumstances in Eastern European and parts of Africa.



This year we hope to be able to send the 100 millionth shoebox since Operation Christmas Child began, in Wrexham, back in 1990. So if you have never made a box before, or haven't done one for a while, make this a special year when you can give hope to families who struggle to survive by showing them that although their plight is no longer headline news, they are not forgotten.



In January 2013, I will be joining three other local people as part of a Samaritan's Purse team to northern Bosnia where we will help local partners distribute boxes to children and

communities who need them most.

As part of our local celebration of the hope and joy a shoebox can provide, we will be holding our annual Romsey Deanery Service for Operation Christmas Child on Sunday, 18th November, at 3pm, at All Saints, Braishfield. Please bring your completed boxes, families and friends. For more information contact me, Julia Barnett, rep. for Samaritan's Purse on 340793.

Thank you for your continued support.

What's on at the Mill Arms

Home-made pie night

Friday, 23rd November
6.30-8.30pm

There is nothing quite like the comfort of a good home-made pie, mash and rich gravy during the cold, damp winter months – so for that reason we are hosting another *Pie Night*.

Buffet style so you can have as little or as much of any of the pies, as you like.

On the Menu

Steak and kidney pudding
Creamy chicken, leek and ham with short crust pastry
Fish pie with herb mashed potato topping
Roasted vegetable and cheese with puff pastry
All served with lashings of creamy mash, roast potatoes, vegetables (not compulsory!) and jugs of rich gravy.

£12 per person

Booking essential as we only cook for the numbers booked!

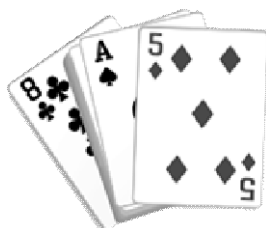
Please note that this is the only menu this evening.

Whist Drives at Mottisfont

Commencing at 7.30pm in the Village Hall

Friday, 30th November
Friday, 21st December

Friday, 25th January
Friday, 22nd February
Friday, 22nd March
Friday, 26th April



We look forward to your support.

John Jenkins (301614)
Gordon Wood (340129)

Lockerley Primary School's Festival of Christmas

Friday, 7th December, 6 - 8pm at Lockerley School

Come and join us for a fun filled evening with a Winter BBQ, bar, raffle, tombola, Santa's Grotto, games and lots of lovely craft stalls.

If you would like to book a stall please contact Julie on 340485.

Christmas Menu

2 or 3 Courses



Available in the pub, conservatory or skittle alley



Spiced parsnip soup, apple glaze & warm bread
Beetroot cured salmon, celeriac remoulade & citrus oil
Hampshire game terrine, real ale chutney and toast
Nanny Blue goats cheese 'cake', spiced pears, walnuts & cranberries

~~~~~  
Roast Bronze Hampshire turkey, chestnut stuffing, pigs in blankets, cranberry compote  
Ringwood Best braised blade & brisket of beef, onions, pancetta & oxtail croquette  
Roast loin of cod, puy lentil cassoulet, fennel & Madeira jus  
Butternut squash & chestnut risotto, cheese crackling

~~~~~  
Christmas pudding, brandy sauce

Warm buttered stollen, cinnamon ice cream & fruit puree

Egg nog pannacotta, mince meat straws

Dark chocolate marquise, honeycomb & orange syrup



2 courses £17pp, 3 courses £21pp
340401 or email: millarms@btconnect.com

WALKING GROUP

The next three walks are:

► Friday, 16th November (N.B. not 9th November as previously indicated). Meet at 9.50am at Mottisfont & Dunbridge Station.

► Friday, 14th December, 9.50am. Meet at the Station for a Surprise Christmas Walk with pub lunch.

► The first New Year walk will be on Friday, 11th January.

Further information from Gordon on 340129.



KIMBRIDGE RESTAURANT

APPLE & PEAR NUTTY CRUMBLE

This recipe makes the most from the autumn 'fall' of fruit, and is a warming dessert for the winter days ahead. Serves 6 persons with custard or cream.

Ingredients

6 Bramley apples, peeled & cored
Juice of 1 lemon
A knob of butter
4 pears, cored & quartered & then sliced
A large pinch of ground cinnamon
150g of caster sugar
150g of walnut pieces
200g of soft margarine, cut into pieces
350g of plain flour
150g of Demerara sugar

How to make it

Cut the apple into pieces and place in a pan with the lemon juice, a knob of butter and four tablespoons of water.

Heat gently for 4 minutes and then add the pear slices with the cinnamon and caster sugar. Cook for another 3-4 minutes until the fruit just begins to soften.

Tip into a 6cm (2") deep, 26cm x 26cm (10") oven-proof dish. Using a food processor, blitz half the walnuts to a fine consistency - like ground almonds - and the other half, pulse to a coarse texture.

In a large bowl, rub the soft margarine into the flour with your fingers and then stir in all of the walnuts and the Demerara sugar until well combined. This mixture should resemble large breadcrumbs.

Scatter the mixture over the softened fruit. Bake in a moderate to hot oven at 190°C (170°C fan)/Gas Mark 5 for 30 minutes until the crumble is golden brown. Allow to cool for a few minutes before serving with custard or cream.



*Ian
Wooldridge,
Head Chef
at Kimbridge
Restaurant*

What's on

► 2nd November: Fish fryday from 12pm till 3:30pm. £8.95,

► 6th November: Creative art workshop with Marina from studio art. This month is Mosaics, £20, including buffet lunch. Please email her directly to book. See her website on www.studeoart.co.uk

► 7th November: Wednesday evening buffet. 3 hot dishes with vegetables. 5.30pm till 9pm. Plus DC Solo Sax (look him up on www.dcsolosax.co.uk) £9.95

► 21st November: Wednesday evening buffet, 5.30pm till 9pm. 3 hot dishes with vegetables. Plus Sticky Toffee Jazz, £11.95. See Sandy's repertoire on line at www.sandyince.moonfruit.com

► 24th November: Christmas lunches and pre-booked dinners start today until 23rd December.

► 27th November: Flower workshop. Fresh Christmas wreathes with Pomp and Petals, including buffet lunch. See www.pompandpetals.co.uk

December

► 1st December: Join us for our "SNOW BALL" a 5-course festive dinner including Bucks Fizz on arrival and a disco, all for £25 per person. 7pm till 11.30pm

► 4th December: Creative Art workshop with Marina. This month's session is on creating your own Christmas cards. £20 including buffet lunch. Book directly with Marina via www.studeoart.co.uk.

► 7th December: Fish fryday from 12pm till 3:30pm. £8.95

► 11th December: Flower workshop. Fresh Christmas wreaths with Pomp and Petals including buffet lunch. See www.pompandpetals.co.uk.

► 17th December: Evening Christmas Dinner. You are invited in 2s, 4s, 8s, 12s, etc., to enjoy our Christmas Fayre from 7pm till 10pm. £20 for 2 courses and £25 for 3 courses. See online or in the shop for the menu.

If you would like to be added to our mailing service, send your email address to kimbridgerestaurant@gmail.com or phone 340777 or 340556

Dunbridge, Mottisfont and Awbridge Oil Group

Apologies for recent confusion over order dates. The next order is due in January.

If you wish to join the group and/or place an order, please contact Helen on 342204 or helenbowers1@btinternet.com.

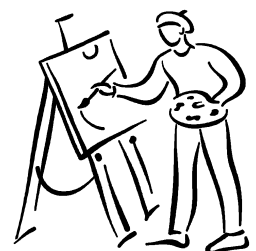
Helen and John (Group Coordinators)

Art Group

We meet at the Village Hall every Thursday afternoon from 2 to 4 pm.

Any new budding artists are always very welcome.

Gordon 340129

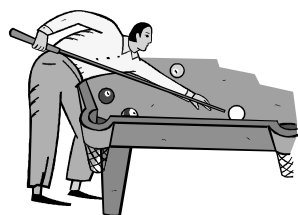


Mottisfont Social Club

Mottisfont Social Club is a good sized venue for all of your celebrations right on your doorstep. We are free to use to all of our members and can assist you in organising your parties.

Please pop in to find out more!

We welcome families and offer a friendly face and reasonably priced bar. We have a range of giant games for children, and for the adults there is a choice of a snooker table, pool table, 5 dart boards, skittle alley, adequate parking and a garden for the warmer weather.



The club is very well situated in the heart of the village and members can take advantage of the premises for their birthday parties and family celebrations - come in and ask for details.

What's on

Mondays: Ladies darts, Snooker
Tuesdays: Billiards
Wednesdays: Airbourne Darts (mixed)
Thursdays: Bingo, Crib
Fridays: Men's darts, Thrift Club
Saturdays: Chase the Aces and occasional entertainment
Sundays: Skittles.

Forthcoming entertainment

Saturday 15th December - Children's Christmas Party

Club Opening Hours

Monday - Saturday: 7pm till 11pm
 Sunday lunchtime: Noon till 2pm
 Sunday evening: 7pm till 10.30pm

THOMAS DOWSE'S TRUST

Are you under 25 living in Mottisfont Parish? If so, you could be eligible for a grant.

The Trust was set up to support children and young people for educational purposes. Past grants have been awarded for a whole range of activities such as school trips, books and other equipment for further and higher education.

This is not a means tested grant, so anyone can apply.

Application forms are normally available in St. Andrew's Church or the Village Hall, or you can contact the secretary, Mrs. Christine Hoskins on 301555. Meetings take place four times a year and the next one will be in November.

Who's Who, What's What and Where's Where in Mottisfont and Dunbridge

Acorn	Editors	Peter & Julia Barnett	340793				
Acorn Community Pre-School	Supervisor	Danae Matthews	342441	St. Andrew's Church	Rector	Revd. Ron Corne	301287
			07860		Curate	Revd Gill Nobes	341010
			662685		Reader	Gina Livermore	388433
Art Group		Gordon Wood	340129		Wardens	Trish Armstrong	
Cricknet Club	Secretary	Edwin Moody	514197	Social Club	Chairman	Susan Clutterbuck	340475
History Group		Michael Horne	340105		Secretary	Peter Simmonds	340891
First Responders	Coordinator	Marion Gray	341370		Steward	Tracy Holmes	341939
Football Club	Secretary	John Fryer	512695	Test Valley Councillor		Linda Holmes	340521
Hampshire County Councillor		Andrew Gibson	01264			Neville Whiteley	01264
			861138	Village Bus	Secretary	George Vaughan	301045
Member of Parliament		Caroline Nokes	512132		Bookings	Pam Dawkins	301203
Mill Arms		Andrea & Ian Bentall	340401		Private Hire	Julie Smith	301470
Mottisfont Abbey	Est. Manager		340757		Operations	Mike Howe	301723
Neighbourhood Watch	Mottisfont	Alan Earthrowl	341799	Village Hall	Chairman	Lynn Young	340134
	Dunbridge	Cliff Astur	341922	(Reg.Charity	Secretary	Margaret Astur	341922
Parish Council	Clerk	Sue Holder	340130	No. 291629)	Bookings	Tony Stemp	340398
	Chairman	John Millns	340347	W.I.	Secretary	Mary Batten	341262
	Councillors	Jeff Channing	340555		Press reporter	Audrey Aitchison	301156
		Jacque Horne	340105	Police	Village	PC John Viney	0845
		Andrew Simmonds					0454545
		(andysimmonds@ic24.net)			Romsey		0845
		Gareth Jenkins	340922				0454545
		Joyce Southwell					

The Acorn is also available at www.theacorn.org.uk where you will also find links to local schools, pubs, trains, council, church, WI and more.