



The Village Newsletter

Mottisfont & Dunbridge

ACORN



December 2012

Come and join the parade!

In mid-November, Romsey Community Lantern Project held a lantern making workshop at Mottisfont Abbey under the guidance of Salisbury-based community artists Jan and Alex Grant of Toozalii Arts. This is a new, community development event for Christmas. The aim of the project is to bring together a variety of groups and individuals to work together to learn new skills as well as provide a celebratory and participatory focus for the area.

This pilot project has been supported by The National Trust, Hampshire County Council, Test Valley Borough Council, Test Valley Arts Foundation, Romsey Town Council, George's Trust, Transition Town Romsey and various local businesses.

Everyone involved will come together on Late Night Shopping Evening (Friday, 7th December) to parade

with their lanterns through the streets of Romsey. The parade will start in the Market Place at 5.30pm and then move around the town finishing in the Market Place in time for the arrival of Father

Christmas. A samba band from Mountbatten School will lead the parade, which will also include Mountbatten Community Choir.

Prior to the parade, volunteers are needed to help to assemble the lanterns at The Abbey (URC) Hall in Romsey from 12 noon on 7th December. This involves adding LED torches to long canes to support the lanterns.



Jan and Alex Grant from Toozalii pictured with Gordon Wood at the Lantern Workshop at Mottisfont Abbey

Refreshments will be provided. Please give me a ring if you can help.

Pat Francis, 340609

Christmas break

The *Acorn* is having a Christmas break, so the next edition will be delivered in early February, 2013.

We hope your Christmas is as wonderful as can be!

Best wishes,

Julia and Peter
Editors

Lee Hinton 1980 – 2012

Pat, Steve and older brother Wayne would like to thank all their friends and neighbours for their kind words, help and support in the time since Lee's sudden passing.

Lee came to Dunbridge when he was five. He attended Lockerley and Test Valley schools and went on to be a free spirit who followed his own thoughtful path. Although his life was cut short he has left many happy and treasured memories for those who loved him, knew him and enjoyed his company.



The deadline for inclusion of items in the February edition of the Acorn is 16th January. Please e-mail contributions to acornnews@mandercom.co.uk.

Parish Council News

Road Closures

Kimbridge Lane level crossing will be closed from 23:45 on Monday, 21st January to 06:00 on Tuesday, 22nd January (overnight), to allow for the replacement of level crossing lighting units.

Part of Oakley Road, Mottisfont, will be closed between 09:30 and 15:30 from Monday, 10th December to Wednesday, 12th December to allow BT access for pole replacement works.

Barley Hill Footpath

We have long campaigned for footpaths both north and south of the station on the B3084 because of the danger to pedestrians, including school children, who have to walk at the side of a busy road with speeding traffic in order to reach Dunbridge station. The project to which we and our residents attach the greatest importance is the missing length of footpath at the bottom of Barley Hill running south from the level crossing past what used to be the station goods yard. The footpath starts at the station, runs no more than a few metres, disappears entirely and resumes again serving houses fronting onto Barley Hill.

There isn't any doubt that the Barley Hill footpath is a priority. As well as being used by the local community, the number of users of the station has increased steadily: in 2002/03 it was 10,640 but by 2010/11 this had increased to 26,950. The Rail Partnership knows about the footpath proposal and supports it. Although the road is covered at this point by a 30mph restriction, the speed limit is widely ignored. HGVs unfortunately use this route and often cut into the side of the road. In addition, vehicles which have been held up by the level

crossing immediately accelerate around this blind corner very fast. Pedestrians going to or from the station take their life in their hands walking along this short stretch.

At the moment, the goods yard is being used by contractors working for Network Rail and for Southern Water, rebuilding the Dunbridge water treatment works. Not surprisingly, the grass verge that used to give at least some protection to pedestrians has now deteriorated very badly. We have got to do something and we think that once the contractors have left the goods yard would be an ideal time. A letter to this effect has been written to Cllr. Kendal of Hampshire County Council, Executive Member of Environment and Transport, to seek his help in hopefully delivering this footpath. We will keep you up to date.

Community Transport Volunteer Driver Campaign

A new campaign aimed at boosting the number of volunteer drivers willing to step in and help their local communities get around has been launched. Hampshire County Council, in partnership with the Hampshire Volunteer Centre Network, the CVS Network and the Good Neighbours Support Service, have organised the campaign to recruit minibus and car drivers. Anyone interested can read more details on line at www.hants.gov.uk/volunteerdrivers or call 0844 499 4088.

Date of future meetings

5th December and 16th January. Everyone will be welcome.

Sue Holder (Clerk), 340130

National Trust

Escape the hustle and bustle of the high street and visit us this winter! You'll find sculptures of stars all around the grounds, from twinkling snowflake stars in the winter garden to a star made entirely of mosaics. There's a telescope to peek into, a stained glass constellation, and even a star that turns into a fountain when it rains! Kids can run on ahead to find the next one as they complete the Shooting Stars trail, which includes craft activities to make and take away.

Along side our sculpture garden will be a new exhibition, New Directions in Contemporary Crafts, which will showcase the astonishing diversity and originality of today's artist-makers, with innovative ceramics, jewellery, textiles and glass by leading makers and rising stars.

Stargazing and New Directions both open on 1st December and are on show until 27th January. We have got some great events coming up in the

festive season, including floral arranging master classes with local florist, Pomp and Petals, creating beautiful door wreaths and stunning table decorations. We are running the classes on 18th and 19th December at a cost of £35 per person; if you book into two classes we'll give you a discount! And why not walk off that Christmas dinner with a ramble with our ranger on Boxing Day when you'll get the opportunity to enjoy a section of the Test which is rarely open to the public as well as a chance to see our local wildlife including our resident water voles. The walk starts at 12 noon. Tickets £7.50 per person.

If you are interested in our upcoming events call 01794 340757 or check out our website- www.nationaltrust.org.uk

We're open every day except Christmas Day so why not pop by!

MOTTISFONT & DUNBRIDGE W.I.



At the November meeting we enjoyed an interesting talk given by Mrs. Gina Ireland, MBE, entitled 'Twisted Life, Females in Prison'. Mrs. Ireland joined the Prison Service at the age of 40 and served as a prison officer for 17 years until she retired.

We were given the timetable for a typical day in the life of a female prisoner starting at 7.30am until lock-up between 8.30pm and 9pm. She also read out some statements and poems written by prisoners who had been in her care, which illustrated how they had come to a life of crime, some of the reasons and regrets.

During October, 18 members enjoyed a day's visit to Oxford with a guided tour of the city.

We would like to express thanks to the Mottisfont Social Club staff for the excellent venue and service at the recent WI Skittle Match, to which I am pleased

to add that Mottisfont & Dunbridge WI won!

The next meeting will be on Tuesday, 11th December at 8pm, and will take the form of a musical evening. It will be a Christmas celebration in music by the harmony group Shirazz. Guests will be very welcome to this evening.

Future Events

The January meeting will be held on Tuesday, 8th January at 8pm, and the speaker will be Susan Lewis talking about 'History without the boring bits'.

We will be holding a Jumble Sale on Saturday, 16th February in the Village Hall, and any items will be very welcome. To arrange collection please phone Cathie on 340129.

Mary Batten

Abe's Adventure

Our two year old grandson, Abe, was diagnosed with Spastic Diplegia, a form of Cerebral Palsy, in March of this year. This condition causes very tight muscles in his legs which means he cannot walk or stand without help.

It is heartbreaking for us to see him trying so hard to do everything his sister and other children his age can achieve with ease, especially since he is a wonderful happy little boy and always smiling.

Our son Gavin and daughter in law Leigh have made a decision to take him to America for specialist surgery to reduce the spasticity, improve his coordination and hopefully enable him to walk independently. St Louis Children's Hospital, have been successfully carrying out this operation for over 20 years. This operation is not readily available here in the UK.

More information about his condition and the operation can be found on Abe's website: www.abes-adventure.co.uk.

Following generous help and support from close friends and acquaintances we decided we should also help fundraising to make Abe's Adventure a reality. In a mad moment Margaret has decided to abseil the Spinnaker Tower in Portsmouth (100m of it) on Sunday, 21st July 2013, at 5pm. Can we encourage you to sponsor Margaret's abseil?

Cliff and Margaret Astur

Donations: www.justgiving.com/margaret-astur
Email: margaret_astur@hotmail.com
Call: 341922

Romsey Singers



The Romsey Singers' Christmas concert is normally a sell-out, but by the time you read this there may be unreserved seat tickets left at £10.

On 14th December at 7.30pm in Romsey Abbey, the choir will perform Handel's Messiah Part 1, followed by a selection of Christmas music and carols, some of which will require audience participation.

Tickets from Romsey Tourist information.



Dear Friends,

As I write my letter for this Christmas 2012, we hear in the news the very worrying situation of conflict in Israel and in the Palestinian territories. Hamas fired a rocket at Jerusalem for the first time ever, hitting an uninhabited area outside of the city. Plus we remember the continuing battles in Syria and Afghanistan.



We are reminded by the scriptures that conflict and threat of violent death are nothing new. We are told in St. Matthew's Gospel "an angel appeared to Joseph in a dream, and said, 'Get up, take the child and his mother and escape with them to Egypt, and stay there until I tell you; for Herod is going to search for the child to kill him'" (Matt 2:vs 13,14).

As soon as the child Jesus was born into the world he was under deadly threat of murder and of death, and he grew up to face these severe dangers. His response was not one of vengeance or reprisal but an entirely new response, a message of Good News, the Good News of Christ's Salvation and of

God's love and forgiveness, with Jesus eventually giving his life for our salvation. This is the incredible Christian message which is unrivalled in history, the eternal message of the Prince of Peace to the world.

This Christmas please join with us in our services across the Benefice as we meet to worship and pray, to sing our familiar carols, to draw together as communities thanking God for the things in life which are of the greatest importance: our families, our friends, our homes, our communities, our country. Worshipping God, praying for peace and for those in need and drawing closer to the God who has declared his love at Christmas by sending his only Son to teach us the meaning of his love and to show us how to live in forgiveness and peace.

May God Bless you this Christmas 2012 and as we prepare to welcome in a new 2013.

With Christian love,

Ron Corne, Rector.

Samaritan's Purse: Operation Christmas Child



Thank you to all those of you who have contributed throughout the year to the Operation Christmas Child appeal (a project of Samaritan's Purse) by knitting, collecting small games, soft toys, stationery and toiletries to add to boxes, or by filling shoeboxes with gifts to send to poor countries overseas.

On Sunday, 18th November, as part of the Romsey Deanery Shoebox service, your gifts and completed boxes were brought together to make a magnificent total of 1,069 filled shoeboxes! From Braishfield they were taken to our Eastleigh warehouse to join over 20,000 boxes at the start of their journey to countries as far afield as Swaziland, Romania, the Ukraine and Bosnia.

I, along with three other local Samaritan's Purse volunteers, will be travelling to Bosnia in January where we hope to meet up again with shoeboxes from the Romsey area. We will then be able to see at first hand the distribution of the shoeboxes and the impact that they have on the children and communities that receive them.

Thank you on behalf of the children who are given a gift filled shoebox this year and for your continued support of Operation Christmas Child.

Julia Barnett

St. Andrew's Christingle and Carols

The congregation of St Andrew's Church extend an open invitation to all parishioners to join them for the Christingle and Carol services.

The Christingle Service will take place on Sunday, 9th December at 11:00am. This service will be suitable for all the family. For the children and young at heart who enjoy making things, this year we are giving you the opportunity to make your own Christingle in Church from 10:30am. Everything will be supplied; just turn up and have fun creating a Christingle before the service.

The Village Carol service will be on Sunday, 23rd December at 11:00am. Please join us to sing your favourite Carols and hear afresh the Christmas story. You are warmly invited to remain after the service to share refreshments and chat to neighbours and friends you do not get to see very often during the dark winter days.

BROUGHTON BRIGHT HOUR

Thursdays at 2.30pm in the New Room at
St. Mary's Church, Broughton

Events in December

Thursday, 6th December: Lunch
Thursday, 13th December: Carols

Everyone welcome, please come and join us.

There will be no more meetings until February 2013.

Barbara Perry, Booking Secretary, 301466

CHURCH OF ENGLAND SERVICES FOR DECEMBER AND JANUARY

DATE	TIME	CHURCH	SERVICE
2nd December Advent Sunday	9.30am	Bossington	Holy Communion (BCP)
	10.30am	Mottisfont	Holy Communion (CW) with Bishop John Dennis
9th December Advent 2	8.00am	Broughton	Holy Communion (BCP)
	9.30am	Broughton	Family Service
	9.30am	Houghton	Holy Communion (CW)
	11.00am	Mottisfont	Christingle
14th December (Friday)	2.30pm	Broughton	Broughton School Carol Service
16th December Advent 3	9.30am	Mottisfont	Holy Communion (BCP)
	9.30am	Broughton	Sunday Club
	11.00am	Broughton	Holy Communion (CW) and Coffee Club
	6.00pm	Houghton	Evensong
19th December (Wednesday)	6.30pm	Bossington	Carol Service
20th December (Thursday)	7.00pm	Houghton	Carol Service
23rd December Advent 4	11.00am	Mottisfont	Carol Service
	6.00pm	Broughton	Carol Service
24th December (Monday)	5.00pm	Broughton	Family Crib Service
	11.30pm	Broughton	Midnight Eucharist
25th December (Tuesday)	9.30am	Bossington	Holy Communion (BCP)
	9.30am	Houghton	Holy Communion (CW)
	10.00am	Broughton	Family Service
	11.00am	Mottisfont	Holy Communion (CW)
30th December Christmas 1	9.30am	Broughton	Holy Communion (CW) for the Benefice
6th January Epiphany	8.00am	Broughton	Holy Communion (CW)
	9.30am	Bossington	Holy Communion (BCP)
	11.00am	Mottisfont	Matins
	6.00pm	Houghton	Christingle
13th January Baptism of Christ	8.00am	Broughton	Holy Communion (BCP)
	9.30am	Broughton	Family Service
	9.30am	Houghton	Holy Communion (CW)
	11.00am	Mottisfont	Family Service
20th January Epiphany 2 (BCP) Epiphany 3 (CW)	9.30am	Mottisfont	Holy Communion (BCP)
	9.30am	Broughton	Sunday Club
	11.00am	Broughton	Holy Communion (CW) and Coffee Club
	6.00pm	Houghton	Evensong
27th January Education Sunday	9.30am	Broughton	Family Communion
	9.30am	Broughton	Sunday Club
	11.00am	Mottisfont	Family Communion
	6.00pm	Houghton	Holy Communion (BCP)

Every Wednesday **except 26th December**: 9.30am, St. Mary's Church, Broughton - Holy Communion (BCP)
 BCP - Book of Common Prayer CW - Common Worship

Lockerley Primary School's

Festival of Christmas

Friday, 7th December, 6 - 8pm at
Lockerley School



Come and join us for a fun filled evening with a Winter BBQ, bar, raffle, tombola, Santa's Grotto, games and lots of lovely craft stalls.

If you would like to book a stall please contact Julie on 340485.

Whist Drives at Mottisfont

Commencing at 7.30pm in the Village Hall

Friday, 21st December

Friday, 25th January
Friday, 22nd February
Friday, 22nd March
Friday, 26th April



We look forward to your support.

John Jenkins (301614)
Gordon Wood (340129)

Thank you, Acorn

A big thank you to Peter and Julia Barnett for the work involved in the production each month - a valuable contribution to our Parish.

Appreciation and thanks also to those who turn out in all weathers to post it through your door. The team is David & Gill Chase, Susan Clutterbuck, Rachel Fowler, Alan Groves, Jacquie & Michael Horn, Ann Jeans, Jacqui & John Millns, Marg & Tony Spreadbury, Narell Thomas and my husband Gordon.

Thank you to everybody!

With best wishes for Christmas & the New Year,

Cathie Wood

We'd like to add our thanks to the delivery team, to all who send us items for inclusion throughout the year, and especially to Helen Bowers for proof reading! - Eds.

What's on at the Mill Arms

Christmas Menu

2 or 3 Courses



Available in the pub, conservatory or
skittle alley



Spiced parsnip soup, apple
glaze & warm bread
Beetroot cured salmon,
celeriac remoulade & citrus oil
Hampshire game terrine, real
ale chutney and toast
Nanny Blue goats cheese
'cake', spiced pears, walnuts & cranberries

~~~~~  
Roast Bronze Hampshire turkey, chestnut stuffing,  
pigs in blankets, cranberry compote  
Ringwood Best braised blade & brisket of beef,  
onions, pancetta & oxtail croquette  
Roast loin of cod, puy lentil cassoulet,  
fennel & Madeira jus  
Butternut squash & chestnut risotto,  
cheese crackling

~~~~~  
Christmas pudding, brandy
sauce

Warm buttered stollen,
cinnamon ice cream & fruit
puree

Egg nog pannacotta, mince
meat straws

Dark chocolate marquise,
honeycomb & orange syrup



2 courses £17pp, 3 courses £21pp

340401 or email: millarms@btconnect.com

WALKING GROUP

Our next walks are:

► Friday, 14th December, 9.50am.
Meet at the station for a Christmas
walk and a pub lunch.

► Friday, 11th January, 10.00am.
Meet at the station for a "Snow & Slush" walk?!!



► Friday, 8th February, 9.30am. Meet
at the station. A bit further afield this
time - using cars (shared).

Further information from Gordon on
340129.

KIMBRIDGE RESTAURANT

FETA CHEESE & CRANBERRY FILO TARTS

This dish is a good way to start off your Christmas meal as a light starter. The recipe serves four people.

Ingredients:

4 tablespoons of olive oil
1 onion, peeled & chopped
8 black olives, stoned & chopped
½ a yellow pepper, diced
½ a red pepper, diced
85g of fresh or frozen cranberries
1 eating apple
1 tablespoon of lemon juice
8 sheets of filo pastry
125g of feta cheese, cut into small cubes



*Kate Buchan,
Sous Chef
at Kimbridge
Restaurant*

How to make it:

Preheat the oven to 180°C/350°F/ Gas Mark 4.
Heat two tablespoons of the olive oil in a frying pan over a medium heat. Add the onion and the peppers, cook whilst stirring for 3 minutes until soft. Remove from the heat and stir in the olives and cranberries.

Core and chop the apple and add to the pan with the lemon juice. Stir well and set aside.

Cut the 8 sheets of filo into 16 squares measuring 13cm/5 inches across. Brush the filo squares with the remaining oil and use them to line 4 small flan tins (if you don't have flan tins use a muffin tray). Place 4 sheets in each tin, staggering them so that the overhanging corners make a decorative star shape.

Divide the cranberry filling into the 4 filo pasty cases, scattering some feta cheese over each one and bake in the centre of the preheated oven for about 10 minutes or until golden brown.

Serve hot with a small salad garnish.

Merry Christmas!

What's on

In December

- ▶ 1st December: Join us for our "SNOW BALL", a 5-course festive dinner including Bucks Fizz on arrival and a disco, all for £25 per person. 7pm till 11.30pm
- ▶ 4th December: Creative Art workshop with Marina. This month's session is on creating your own Christmas cards. £20 including buffet lunch. Book directly with Marina via www.studeoart.co.uk.
- ▶ 7th December: Fish fryday from 12pm till 3:30pm. £8.95
- ▶ 11th December: Flower workshop. Fresh Christmas wreaths with Pomp and Petals including buffet lunch. See www.pompandpetals.co.uk.
- ▶ 17th December: Evening Christmas Dinner. You are invited in 2s, 4s, 8s, 12s, etc., to enjoy our Christmas Fayre from 7pm till 10pm. £20 for 2 courses and £25 for 3 courses. See online or in the shop for the menu.

- o o o -

The Kimbridge Club

From 2nd January to 17th February

NEW YEAR OFFERS

Lunches for bookings of 4 or more
£10.00 for 2 courses on selected dishes
also

2 for the price of 1 on the following:
Full English breakfast, 10am till 12 noon
Lunch time desserts, 12noon till 3pm
Cream tea, 3pm till 4.30pm
½ sandwich and soup £5.95

Call us for details!

If you would like to be added to our mailing service, send your email address to kimbridgerestaurant@gmail.com or phone 340777 or 340556

Dunbridge, Mottisfont and Awbridge Oil Group

Apologies for recent confusion over order dates.
The next order is due in January.

If you wish to join the group and/or place an order, please contact Helen on 342204 or helenbowers1@btinternet.com.

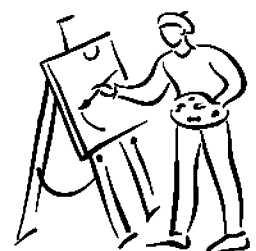
Helen and John (Group Coordinators)

Art Group

We will continue in the New Year as usual, meeting in the Village Hall every Thursday afternoon from 2 to 4 pm.

Any new budding artists are always very welcome.

Gordon 340129

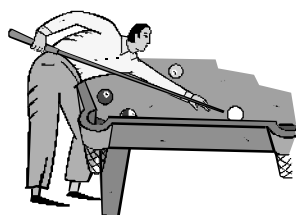


Mottisfont Social Club

Mottisfont Social Club is a good sized venue for all of your celebrations right on your doorstep. We are free to use to all of our members and can assist you in organising your parties.

Please pop in to find out more!

We welcome families and offer a friendly face and reasonably priced bar. We have a range of giant games for children, and for the adults there is a choice of a snooker table, pool table, 5 dart boards, skittle alley, adequate parking and a garden for the warmer weather.



The club is very well situated in the heart of the village and members can take advantage of the premises for their birthday parties and family celebrations - come in and ask for details.

What's on

Mondays:	Ladies darts, Snooker
Tuesdays:	Billiards
Wednesdays:	Airbourne Darts (mixed)
Thursdays:	Bingo, Crib
Fridays:	Men's darts, Thrift Club
Saturdays:	Chase the Aces and occasional entertainment
Sundays:	Skittles.

Forthcoming entertainment

Saturday 15th December - Children's Christmas Party

Club Opening Hours

Monday - Saturday:	7pm till 11pm
Sunday lunchtime:	Noon till 2pm
Sunday evening:	7pm till 10.30pm

THOMAS DOWSE'S TRUST

Are you under 25 living in Mottisfont Parish? If so, you could be eligible for a grant.

The Trust was set up to support children and young people for educational purposes. Past grants have been awarded for a whole range of activities such as school trips, books and other equipment for further and higher education.

This is not a means tested grant, so anyone can apply.

Application forms are normally available in St. Andrew's Church or the Village Hall, or you can contact the secretary, Mrs. Christine Hoskins on 301555. Meetings take place four times a year; the next one will be in March.

Who's Who, What's What and Where's Where in Mottisfont and Dunbridge

<p>Acorn Editors Peter & Julia Barnett 340793</p> <p>Acorn Community Pre-School Supervisor Danae Matthews 342441 07860 662685</p> <p>Art Group Gordon Wood 340129</p> <p>Cricknet Club Secretary Edwin Moody 514197</p> <p>History Group Michael Horne 340105</p> <p>First Responders Coordinator Marion Gray 341370</p> <p>Football Club Secretary John Fryer 512695</p> <p>Hampshire County Councillor Andrew Gibson 01264 861138</p> <p>Member of Parliament Caroline Nokes 512132</p> <p>Mill Arms Andrea & Ian Bentall 340401 340757</p> <p>Mottisfont Abbey Est. Manager Alan Earthrowl 341799</p> <p>Neighbourhood Watch Dunbridge Cliff Astur 341922</p> <p>Parish Council Clerk Sue Holder 340130 Chairman John Millns 340347 Councillors Jeff Channing 340555 Jacquie Horne 340105 Andrew Simmonds (andysimmonds@ic24.net) 340922 Gareth Jenkins 340922 Joyce Southwell</p>	<p>St. Andrew's Church Rector Revd. Ron Corne 301287 Curate Revd Gill Nobes 341010 Reader Gina Livermore 388433 Wardens Trish Armstrong 340475 Susan Clutterbuck 340891</p> <p>Social Club Chairman Peter Simmonds 341939 Secretary Tracy Holmes 340521 Steward Linda Holmes 01264 811101</p> <p>Test Valley Councillor Neville Whiteley 01264 811101</p> <p>Village Bus Secretary George Vaughan 301045 Bookings Pam Dawkins 301203 Private Hire Julie Smith 301470 Operations Mike Howe 301723</p> <p>Village Hall Chairman Lynn Young 340134 (Reg.Charity No. 291629) Secretary Margaret Astur 341922 Bookings Tony Stemp 340398 W.I. Secretary Cathie Wood 340129 Press reporter Mary Batten 341262</p> <p>Police Village PC John Viney 0845 0454545 Romsey 0845 0454545</p>
--	---

The Acorn is also available at www.theacorn.org.uk where you will also find links to local schools, pubs, trains, council, church, WI and more.

Mottisfont & Dunbridge Acorn is edited and published by Peter & Julia Barnett, Dunelm House, Barley Hill, Dunbridge, Romsey, SO51 0LF, telephone: 01794 340793, acornnews@mandercom.co.uk, with assistance from Kimbridge Farm Shop and the Mottisfont Social Club. Opinions expressed in The Acorn are not necessarily those of the editorial team. We do our best to ensure the accuracy of items in The Acorn, but we will not be responsible for the consequences of errors or omissions. You should check with organisers of events in case there are last minute changes. © Mottisfont & Dunbridge Acorn, 2012.