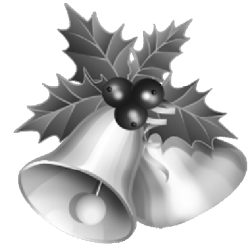


The Village Newsletter

Mottisfont & Dunbridge
ACORN



December 2011

DIGITAL TV SWITCHOVER SPRING 2012

You are probably aware that the digital TV switchover will happen in our area in Spring 2012. The actual dates are 8th and 22nd February for the Hannington (near Newbury) transmitter and 7th and 28th March for the Rowridge (Isle of Wight) transmitter. Because we are right on the edge of the two transmitter areas some of you will have aerials pointing northeast to Hannington and some south to the Isle of Wight.

As we get closer to these dates you will see more public service announcements on television and in the newspapers and posters all around the area.

Now if you already know about this that's great: you are part of 95% of the population that either already has a Freeview TV or set top box, or knows they will need to get one, or receives their signal via satellite. You will also know that on switchover day you will need to re-tune your Freeview TV or set top box. Satellite users won't need to do anything.

However the reason for this article is that folk with a television that only receives four or five channels will lose their television signal in the spring and some may need help coping with the digital switchover.

**DO YOU KNOW SOMEONE WHO MAY NOT BE
AWARE OR MAY NEED HELP
WITH THE DIGITAL SWITCHOVER?**

Did you know there is a switchover help scheme for anyone aged 75 and over, those who have lived in a care home for six months or more, are eligible for disability allowance, or are registered blind or partially sighted? The scheme will arrange for an approved installer to supply and install everything they need to switch one TV to digital. For some this may be free.

FOR SALE: REEBOK MINI SIDE STEPPER with resistance tubes (for upper body workout) which are detachable. Max. user weight 110kg. Has digital display which tracks strides, strides per minute and calories. See it in the Argos catalogue. Bargain only £15. Phone 341301.

LOCAL AVON REPRESENTATIVE

I have found someone in the village of Broughton who will include Mottisfont and Dunbridge within their Avon catchment area. So if you are interested in having a look at the Avon catalogue/ordering from the Avon range, please ring Debbie Collis on 301569.

People covered by the scheme will receive letters about it but they may still need your help. They can either call free 0800 40 85 900 themselves, or as a trusted friend you could make the call for them. You can also go to the website www.helpscheme.co.uk.

Test Valley Community Services is working in partnership with the help scheme to ensure as many people as possible hear about the digital switchover. In the local area I shall be delivering leaflets and posters to local shops and pubs and putting them on village notice boards. If you would like your own leaflets or bookmarks please give me a call.

We all need to ensure no one loses their TV signal next spring. **IT WILL ONLY TAKE A MINUTE OF YOUR TIME, BUT YOU MIGHT BE THE ONLY ONE WHO TELLS THEM.**

Thank you.

David Francis - Tel: 340609.

**REDUCING THE COST
OF HEATING OIL**

Some of us are looking into the idea of forming an oil consortium for the Dunbridge area, where friends and neighbours group together to purchase their heating oil at the same time, and save £££ as a result.

Interested, or have ideas for how we might do this? Please contact Helen or Kim on 342204 or helenbowers1@btinternet.com.

**Are you a small business person looking for
new ideas for 2012?**

Why not come along to our free networking group and meet like minded entrepreneurs?

When? 12.00- 2.00pm 1st Wednesday in the month - starting 4th January 2012.

Where? Willow Bank House B&B and Business Centre, Saunders Lane, Awbridge, SO51 0GP

How? Ring 340843 and ask to speak to Jennifer Wineberg to book.

PS Bacon, toast and coffee available for £5.00 for those who get hungry.

**The deadline for inclusion of items in the February edition of the Acorn is
16th January. Please e-mail to acornnews@mandercom.co.uk.**

**ADVANCE NOTICE:
NO JANUARY
EDITION!**

Parish Council News

Joyce Southwell was co-opted onto the council at our October meeting, which brings the council back up to full strength! Our thanks go to Joyce for offering her support and time to the parish.

Please be aware that there have been a few cases of Seasonal Canine Illness within the New Forest area. If you have walked in woodland areas and your dog suffers from diarrhoea, vomiting or lethargy, please contact a vet immediately. Clinical signs come on incredibly quickly, within a few hours of access to woodland. All veterinary practices in the area have been informed.

The government is asking people for their views on priorities for improving care and support services. The Department of Health are in discussion with people who use care and support services - carers, local councils, care providers and the voluntary sector – and are looking at ways of improving the care and support system.

In addition, it wants to discuss what people's priorities for change are and has identified six key areas where it believes there is the biggest potential to make improvements to the care and support system.

These areas are:

- Quality standards
- Personalising services for individuals

Shaping local services
Prevention
Integration of health and social services
Role of financial services

The government is especially keen to hear views from people who use care and support services, carers, local councils, care providers, and the voluntary sector. Feedback can be submitted by emailing caringforourfuture@dh.gsi.gov.uk

At the October meeting, PCSO Jo Cole reported that there has been an increase in oil thefts in West Tytherley and East Deane. An entire oil tank was removed from one location; diesel thefts are on the increase, especially red diesel.

Date of future meetings (all on Wednesdays at 7.30pm):

- 7th December
- 18th January
- 29th February
- 11th April - Annual Parish Meeting
- 23rd May - Annual General Meeting

Everyone welcome.

Clerk : Sue Holder, 340130

National Trust

We are very sad to announce the death of Dannie Hackett, Building Surveyor for the Mottisfont estate, who died on Wednesday, 17th November after a long illness. Many of our tenants will have known Dannie who worked at Mottisfont for 10 years. He cared passionately about the historical items in his remit – not only the cottages and Abbey, but the huts, walls, fences, chimney pots, door furniture and all the other myriad small objects and building problems that come with an 800-year old estate. Our thoughts are with his wife and family.

Alison Evans, General Manager

Proposed new visitor facilities in Mottisfont Abbey visitor car park

Completion of the plans has been delayed, so the opportunity for residents to discuss them with the project manager will be announced in the next (February) edition of the Acorn.

What's on

The Angel Garden at Mottisfont

We are open from Friday, 2nd to Monday 19th December, and every day from 26 December, so why not escape the High Street and come to Mottisfont for a breath of fresh air?

Come for a lovely walk, and see something different around the grounds or in the Gallery. Warm up by the wood burner with a treat from the café, or do a little relaxed shopping.

- ▶ Christmas with a difference – angel sculptures come to earth around our gardens.
- ▶ Hear angelic voices every weekend, with carols by

local choirs

▶ House open for Cutting Edge: Contemporary Paper Art in the Gallery – from paper flowers and butterflies to love stories and celebrations of what makes us all unique and wonderful.

What's on for families?

- ▶ Kids go FREE in December
- ▶ Set off on a hunt for tiny angels – can you find them all?
- ▶ Creative activities around the site, something to do every day
- ▶ Weekend mosaic workshops
- ▶ Free mince pie or piece of cake! To claim your delicious home-made treat, please show your tenants card at the café till.

Cutting Edge: Paper Art Exhibition

From 12th November to 29th January, Mottisfont is showcasing work by leading contemporary artists Rob Ryan, Ed Kluz, John Dilnot, Eileen White, Sally Sheinman and Jonny Hannah who use techniques including collage, print-making and paper cuts to transform paper into fragile and breathtakingly beautiful illustrations and sculpture.

Originally a printmaker, artist Rob Ryan is now one of Britain's most highly regarded paper cut artists, collaborating with Liberty of London and Fortnum and Mason, amongst others. The paper cuts, which often depict whimsical figures paired with sentimental, grave and sometimes humorous pieces of writing, are all cut by hand from one single sheet of paper using a scalpel, and can take from one day to several weeks to create. As the

(Continued on page 3)

The Broughton and Mottisfont Community Bus Committee

Charity Number: 284910

HEDGE END TRIP

In response to a request made at the AGM, the Bus Committee is planning to run a one-off trip to the Hedge End shopping complex in time for Christmas. Booking arrangements will be as for our summer excursions; i.e. phone bookings to Elsie Croucher on 301428. If there are fewer than 7 people booked the trip will be cancelled (and money returned).

The trip will be on Monday, 12th December at the following times:

The Square	09.30
Dixon's Lane	09.35
Dunbridge	09.50
Hedge End	c. 11.00

Hedge End	14.00
Dunbridge	15.00
Broughton	15.15



Return Fares:

Broughton	Adult	£6.50
	Under 16	£3.50
Mottisfont & Dunbridge	Adult	£6.00
	Under 16	£3.00

(Continued from page 2)

paper is cut, a picture or 'story' is revealed, traced in silhouette.

Inspired by Mottisfont's gardens, Winchester-based artist Eileen White has designed a 15ft paper cut mobile that cascades from the ceiling of the Long Gallery. Hundreds of tiny leaves, flowers and other natural elements are suspended in the air, casting long shadows created by dramatic lighting, and moving gently in the drafts that enter this old house.

Ed Kluz, who has recently completed commissions for the Victoria & Albert Museum, uses a wide range of media such as gouache, ink, wax, wire and cut paper to explore our perception of historical buildings, objects and folklore. Examples of his work on show include stunning three dimensional miniature paper buildings housed in Victorian glass domes, and intricately detailed paper collages of England's built heritage.

Award-winning screen printer John Dilnot, whose work is housed in collections at the New York Museum of Modern Art and the British Library, creates beautiful 'vignettes' inside glass fronted boxes. Peer into these beguiling diagrams and you might glimpse flocks of tiny birds on a migratory route, or a menacing woodland scene in whose branches perch owls and other birds. John is also displaying new examples of his popular screen print books. Filled with richly coloured illustrations, earlier editions have featured old apple varieties, cows, the English home, even garden pests.

American artist Sally Sheinman celebrates humankind

MOTTISFONT AND DUNBRIDGE WI

We were pleased to welcome Mrs Margaret Braddock to our November meeting, who gave an interesting talk on "Mary Rose - The Future". The Mary Rose, Henry VIII's flagship, was commissioned in 1509 and after many years in service finally sank in 1545, with very few survivors.



Attempts were made to salvage her and, after one of the largest archaeological excavations, the Mary Rose was raised in 1982, watched by millions worldwide. She was taken into Portsmouth where fresh water sprays kept the timbers wet. She is now being sprayed with a synthetic wax, which will soon be stopped, after which it will take five years to dry the ship. The contents of the ship have survived and, over the years, nearly 20,000 artefacts have been recovered, giving a unique insight into the lives of the sailors of that time.

For the future, the Mary Rose Trust is now building a world-class museum to house the ship, together with 50% of the recovered artefacts, which will be placed near to where they were located on that day in 1545. Thus visitors will be able to see the Mary Rose in the open, without having to look at her through glass.

Altogether a very informative talk and much enjoyed by members.

Members took part in the Annual Skittles Match at Wellow Golf Club, and enjoyed a Vintage Jazz Evening, with supper included, at Awbridge WI. A foot-tapping evening!! We are looking forward to another musical evening in December, at the Salberg Studio in Salisbury.

Our next meeting is at 8pm on Tuesday, 13 December, when we welcome Ian Wooldridge from Annie's Tearooms at Kimbridge. His talk will be "An Appreciation of the World of Spice". Guests are very welcome.

Audrey Atchison 301156

with her work 'Being Human' – a 200-foot long paper sculpture made from 25,000 pieces of hand-painted gold Japanese rice paper to symbolise the number of genes in the human genome. She also explores aspects of our shared genetic history, with 700 drawings of the human form, and the question for visitors: what makes you unique?

Sally's installation also celebrates everyone who makes up the National Trust, from volunteers to historical inhabitants and visitors, who can add to the sculpture their own words about who they want to celebrate and why.

Limited edition prints are available for sale during the exhibition, creating the ideal opportunity to begin collecting contemporary artwork. Design products for the home are also available, which make beautiful and unusual Christmas gifts. Cutting Edge: Contemporary Paper Art runs from 12th November to 29th January, 11am to 5pm (or dusk if sooner).

Dear Friends,

Yes, Christmas is just around the corner, and for Mottisfont we will be holding our very special Carol Service on the 18th December at 11.00am. Indeed throughout the Benefice we will be holding our special Christmas Carols Services and Communions. Why do we do this? It is so that we, as frail human beings, can be supported by the wonder and the joy of the Christmas liturgy, of carols and hymns of Gospel words and sacrament. The Church in her wisdom shapes the time necessary to contemplate the incomprehensible: the great mystery of salvation. In Advent she gives us four weeks to prepare for the coming of the Lord, first at the end of time (the first week of Advent), and then in time with His birth. The reality of Emmanuel – of the infinite and eternal God who willingly and lovingly condescends to live with us as one of us – is so immense that it cannot be contained within a single Communion or a single day. On Christmas Day itself, the Church offers different Communions that each approach the wonder of the Incarnation from different angles: midnight Communion celebrates the temporal birth of Jesus Christ, and the Morning Communion celebrates His birth in our hearts; the choice is also there to commemorate the mystery of the Word who has come to dwell among us.

For the Church, Christmas Day is not one day but eight days, a unified and timeless octave that allows for continuous joy and prayer over the hidden God in the manger. The readings of the week showcase the cost of belief in the Saviour (the martyrdoms of St. Stephen and the Holy Innocents), the reality of God as love (St. John the Evangelist), and the eternity of the Son of God. The octave concludes on January 1, The Naming and Circumcision of Christ and look ahead to the mission of this Saviour as His blood is shed for the first time by circumcision.

Jesus Christ is the Saviour not just for a few, but for the whole world. This is the theme of the Epiphany, the second and third weeks of Christmas and the first two weeks of January, when Jesus' divinity is revealed to the world. The Magi begin this celebration, as they were the first non-Jews to recognize the divinity of the newborn King. The Gospel readings for this week recount the earliest manifestations of God's power possessed by this man Jesus. The liturgical preface for Epiphany week reminds us of the purpose of the Incarnation: "Today You revealed in Christ Your eternal plan of salvation and showed Him as the Light of all peoples. Now that His glory has shown among you You have renewed humanity in his immortal image."



The real world, we are told, is too sophisticated for the piety and sweetness of Christmas: it is a day like any other, and should be left behind as soon as it passes. But this world, for all its wondrous material and technological achievements, is cold, dark, and aimless without the more wondrous Light that came to bring hope to the world. "In Him was life, and the life was the light of men. The light shines in the darkness, and the darkness has not overcome it" (John 1: 4-5).

We need Christmas in January to bring us hope and cheer, as much now as ever before. So let the decorations and the manger stay out a little longer once we go past Christmas Day, and let the Christmas joy continue unabated. Let us not allow empty consumerism to deter us from wishing one another a Merry Christmas and a Happy New Year at the dawn of 2012! Why? Because God is with us in Christ.

With Blessings,
Rev'd Ron Corne, Rector

Special things to note over Christmas and New Year in our churches

Christmas Eve

5.00pm Crib Service St Mary's, Broughton
11.30pm Midnight Eucharist St Mary's, Broughton

On Sunday, 1st January, there will be one service only:
9.30am at St James's, Bossington.

Please come to join us at any of the services in any of the four churches - you will be warmly welcomed!

BROUGHTON BRIGHT HOUR

Thursdays at 2.30pm in the New Room at
St. Mary's Church, Broughton.

Events and speakers for December

1st: Members Meeting.
8th: Carol Service. Please come and join us.

**Please note: There will be no meetings in January.
We will resume on 2nd February.**

Barbara Perry, Booking Secretary, 301466

Carols around the Crib

Supporting Naomi House Children's Hospice
at Medina, Stockbridge Road, Lopcombe, Salisbury, SP5 1BS on Saturday, 3rd December, at 7pm.

Please bring warm clothes and a torch, and we will provide everything else, i.e. punch, hot drinks, mince pies and nibbles, plus music, laughter, friendship and a warm Christmas welcome. Please come, and bring your friends. Looking forward to seeing you!

Parking will be in Hollom Down Road, next to Tilshead Caravans.

Bright Hour has already received some used stamps and foreign coins for Naomi House. If you have collected any but are unable to come on 3rd December, please leave them on the cupboard in St. Mary's Church meeting room, or give them to a member of Bright Hour. Thank you.

Ann and Brian, 01980 862232.

CHURCH OF ENGLAND SERVICES FOR DECEMBER AND JANUARY

Date	Time	Church	Service
4th December, Advent 2	8.00am	Broughton	Holy Communion (CW)
	9.30am	Bossington	Holy Communion (BCP)
	11.00am	Mottisfont	Matins
	6.00pm	Houghton	Evensong
11th December, Advent 3	8.00am	Broughton	Holy Communion (BCP)
	9.30am	Broughton	Family Service
	9.30am	Houghton	Holy Communion (CW)
	11.00am	Mottisfont	Family Service
12th December	2.30pm	Broughton	Broughton School Carol Service
16th December	7.00pm	Bossington	Carol Service
18th December, Advent 4	11.00am	Mottisfont	Carol Service
	6.00pm	Broughton	Carol Service
20th December	6.30pm	Houghton	Carol singing around the village (meet at the Village Hall)
22nd December	7.00pm	Houghton	Candle Lit Carol Service
24th December, Christmas Eve	5.00pm	Broughton	Crib Service
	11.30pm	Broughton	Midnight Eucharist
25th December, Christmas Day	9.30am	Bossington	Holy Communion (BCP)
	9.30am	Houghton	Holy Communion (CW)
	10.00am	Broughton	Family Service
	11.00am	Mottisfont	Holy Communion (CW)
1st January, The Circumcision	9.30am	Bossington	Holy Communion (BCP)
8th January, Epiphany 1	8.00am	Broughton	Holy Communion (BCP)
	9.30am	Broughton	Family Service
	9.30am	Houghton	Holy Communion (CW)
	11.00am	Mottisfont	Family Service, Christingle
15th January, Epiphany 2	9.30am	Mottisfont	Holy Communion (BCP)
	9.30am	Broughton	Sunday Club
	11.00am	Broughton	Holy Communion (CW) and Coffee Club
	6.00pm	Houghton	Evensong
22nd January, Epiphany 3	9.30am	Broughton	Holy Communion (CW)
	9.30am	Broughton	Sunday Club
	11.00am	Mottisfont	Family Communion
	6.00pm	Houghton	Holy Communion (BCP)
29th January, Epiphany 4	9.30am	Broughton	Holy Communion (CW) for the Benefice

A Feast of Christmas Music

The Romsey Singers will be giving their regular Christmas concert in Romsey Abbey on Friday December 16th at 7.30pm. The first half will include "Nowell! Nowell!", the carol suite by Winchester musician Malcolm Archer. After that there will be the popular "Decadent Brass" from Salisbury, and carols for choir and audience.

Reserved tickets are £14 and unreserved £10 from Romsey Tourist Information, tel. 512987, or from choir members. They usually sell out!

St. Andrew's Church

CAROL SERVICE, 11am Sunday, 18th December

May I, on behalf of Mottisfont and Dunbridge PCC, draw to your attention the new time of our traditional and much loved carol service.

For very many years this annual event has been held at 3pm on the Sunday before Christmas. It has certainly

(Continued on page 8)

At the Mill Arms

Tasty Tuesdays Knowing the current economic climate is tough for most, on Tuesdays we will be offering a selected dish at a discounted price so everyone can still come out and enjoy themselves in the pub! The same great local ingredients, the same size portion, cooked by the same chef, served by the same staff, but the best bit for you is it's a little bit easier on your wallet!



Examples:

- ▶ 31 day aged Sirloin steak with all the grill accompaniments and a glass of house wine £11.95pp
- ▶ Ringwood beer battered haddock, chips and mushy peas £7.50
- ▶ The Mighty Mill Arms Burger, fries and a pint of ale £10.00pp



The dishes will change each Tuesday. Booking is essential please, as we only cook for the reserved numbers.

Santa Claus is coming to town...

Why not get together with family, friends or colleagues? We have Christmas menus ranging from £9.50 - £20pp. Why not do something different and play skittles too? Available for groups of 20 to 70 people – ask us to email over the menus.



COMING VERY SOON...

The Mill Arms is pleased to let you know that in the very near future we will be installing our wood fired pizza oven! Real Italian stone baked pizzas made from scratch, on site, for you to enjoy with us or to take away! These are almost certainly the best and most authentic pizzas available within at least a 30 mile radius. The adults love them as much as the kids! Bring this copy of The Acorn and for every pizza bought enjoy a free Margarita/1 voucher per reservation or takeaway.



New Years Day Brunch £10pp (kids under 10 years £7.50pp) 12-3pm. All you can eat breakfast buffet – a real Mill Arms tradition! The perfect hangover cure post NYE and the perfect conclusion to your first

frosty 2012 walk in the woods.

We would like to thank you all for your support and custom over the years and we very much look forward to seeing you all very soon!

WALKING GROUP

The next three dates are
▶ Friday 9th December
▶ Friday 13th January
▶ Friday 10th February



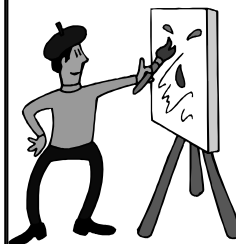
Meet outside the Mill Arms at 10 am. The walks usually take about three hours - nothing too energetic! Come along for the exercise and company.

Gordon, 340129

ART GROUP

Meets every Thursday, 2pm - 4pm at the Village Hall.

All standards catered for, from beginners to professional.



Produce a masterpiece, enjoy tea & biscuits.

Three of our happy band sold paintings at the recent exhibition at Mottisfont Abbey.

Friendly atmosphere. Everybody welcome.

Gordon, 340129

THE ACORN TAKES A BREAK

Please note that there will be no edition of the *Acorn* in January. The next edition will be distributed at the beginning of February.

The editors would like to wish all our readers a very happy Christmas, and a prosperous New Year!

Julia and Peter

The Thomas Dowse Trust

The Thomas Dowse Trust was created to provide people up to the age of 25 years with financial assistance towards educational requirements. The Trust meets four times a year (March, June, September and November) to award grants to those who show a need for financial assistance towards their education, whether it be for Pre-School, School, College or University.

The next Trust meeting will be held in March. All applications for the March meeting must be submitted to the Secretary, Mrs Christine Hoskins, The Old Thatch, High Street, Broughton, no later than the end of February. Any application received after this date will be carried forward to the next meeting in June.

If you live in the Benefice of Bossington and Mottisfont and would like to apply for a grant, application forms can be obtained from the church, the village hall or the Secretary.

WHAT'S ON AT KIMBRIDGE

A Merry Christmas and Happy New Year from The Team At Kimbridge

Christmas Lunch Menus
available from 1st to 23rd December
along with normal daily menus

Christmas Party Dinner Menus
also from 1st to 23rd December
(subject to availability)
for 15 to 60 guests



Large group discounts available

Post Christmas party bookings in January

Special 2 for 1 offers in January
(see in store for information)

Come and purchase your Christmas
decorations and gifts now in our
Christmas wonderland

Visit our new web site
www.kimbridgerestaurant.co.uk
or telephone 340777/340556



Events in December

► 7th December: Brownies singing 6pm and Christmas hot buffet £9.95 incl. donation to the Brownies

► 14th December: Christmas hot buffet with music from DC Solo Sax £12.95

To book, telephone 340777 or 340556.

Thank you from Operation Christmas Child



On behalf of Samaritan's Purse Operation Christmas Child I would like to say a very big THANK YOU for all of the local support we have received for this year's appeal. Once again local schools, groups and individuals have generously provided gift-filled

shoeboxes, together with a stream of knitted hats, gloves, toys, stationery, toiletries and of course donations to help transport the completed boxes. Often these are given to us personally, or left in our porch – such as over 200 tennis balls on one occasion and 58 knitted hats on another!

By the time you read this at least 18,000 boxes will have been sent from our Eastleigh warehouse to children in Eastern Europe who would otherwise not receive a Christmas gift.

If you have helped this year, thank you. If you can help again next year by knitting for us (or giving wool so that others can knit), by donating small toys, toiletries, stationery or other gifts, then thank you again.

For more information contact Julia Barnett, Samaritan's Purse Representative, on 340793.

Recipe of the month: AMERICAN-STYLE TURKEY

This method of preparing the turkey is known as brining. It makes the turkey juicy, tender and moist when cooked. Another American trick is to place a can of beer in the turkey cavity to keep it moist from the inside. The juices from the turkey make excellent gravy too!

This recipe makes enough brine for a 24lb (10-12 kg) turkey. The most difficult part of this preparation is finding a food-grade bucket and fridge space big enough!

Ingredients:

4 litres of vegetable stock
200g of coarse sea salt
4 bay leaves
4 tsp of dried rosemary
4 tsp of dried thyme
2 tsp of dried sage
2 tsp of paprika
4 litres of iced water
330ml can of beer, opened

How to make it:

In a large pan bring the stock to the boil and add the salt along with the bay leaves, dried herbs and paprika. Stir frequently until all the salt has been dissolved. Remove from the heat and allow to cool to room temperature.

When the mixture has cooled, pour into a 20 litre non-reactive bucket. Obviously, if you have a 5-6kg turkey and are making half the above quantity, you only need a 10 litre bucket. Then stir the iced water into the bucket.

Now wash and dry your turkey, checking that the innards have been removed. Place the turkey in the bucket of brine, making sure the cavity gets filled. Top up with water if required. Cover the bucket with its lid or with cling film and place in the fridge for a least 1 hour per lb (0.5kg).

Now pour the brining solution away and thoroughly rinse all the brine from the turkey otherwise there will be a salty flavour to the cooked turkey. Place the turkey on a rack on the draining area of your sink and pat completely dry. Remembering to place an opened can of beer in the cavity, you can cook your turkey in the usual way. Brined turkeys cook 20 to 30 minutes quicker, so keep an eye on the oven!

Have a great Christmas!!



Ian
Wooldridge,
Head Chef
at Kimbridge
Farm

Having a party and need some glasses, plates, cutlery, etc?

We have 48 balloon wine glasses (25cl) for sale. Used once, £15 the lot.

Also about 40 sets of cutlery (plastic but metallic finish - surprisingly good!), plates, etc. Offers invited to take away the lot!

Please call Peter on 340793.

(Continued from page 5)

been thus since I have lived here (over 25 years), but bearing in mind St. Andrews is a 12th century church, it could be far longer than we think! People seldom welcome changes to long established traditions, so I thought a word of explanation would be appropriate.



Initially the move to 11am was for logistical reasons, namely the availability of an organist...not just any organist, but our loyal and stalwart organist Gillian. Fortunately Gillian is able to play for us at 11am for which we are very thankful. However we feel there may be additional benefits to the new earlier time.

On a number of occasions, not least last year, the weather has been very wintery and the going underfoot icy and treacherous. The service at 3pm starts in daylight but ends after darkness has fallen. The pathways are uneven and the street lighting non-existent... some of us repeatedly forget the torch! Perhaps some of you feel reluctant to venture out after dark but would like to attend a morning service. Others of us that do brave it might be at risk of slipping over if it is icy and visibility is poor. This is a concern. Christmas in a plaster cast is not so jolly!

We are hoping the new time of 11am will encourage even more to join in and that the regular attendees will continue to support this lovely service of songful praise and wonderment. The mince pies and mulled wine will be plentiful at the end of the service as before...no change there!

So please do come along for this, the first real celebration of the nativity, which starts the countdown to Christmas.

Trish Armstrong, Churchwarden

ROMSEY SAFER NEIGHBOURHOODS

From time to time the police receive reports of theft of domestic fuel oil from storage tanks, especially in remote rural areas. Oil users are advised to adopt preventative measures to help reduce the risk of becoming a victim.

Padlocks: A thief will usually come equipped with a range of tools to attack your tank, so it's worth spending a little more on good quality locks. Close shackle padlocks are best as they offer most resistance to the burglar's favourite tool: bolt croppers. Close shackle padlocks have very little of the metal hoop (shackle) exposed, and bolt croppers cannot get a good grip. Remember that buying a padlock is like buying a car: the more you pay, the better the quality and the longer it will last.

Oil level gauges: remote electronic oil level gauges are now available which will set off an audible alarm if the oil level in the tank suddenly drops or falls below quarter full. These gauges can be located in the kitchen, or perhaps a utility room to warn of any potential problem. There are two or three different versions on the market at the moment, costing between £70 and £100.

Defensive planting: this is nature's way of helping reduce crime. Thieves will not want to force their way through or over a prickly hedge, and if they do, the smallest trace of blood or shred of ripped clothing could help the police identify the offender. These shrubs can be planted around the tank providing an effective and decorative thief-proof barrier. A metal grill or cage with lockable access can further improve security, but don't forget that the oil tanker driver will need to have access.

Contact Hampshire Constabulary on 101 for non-emergency matters. In an emergency call 999.

Who's Who, What's What and Where's Where in Mottisfont and Dunbridge

Acorn	Editors	Peter & Julia Barnett	340793	St. Andrew's Church	Rector	Revd. Ron Corne	301287
Acorn Community Pre-School	Supervisor	Danae Matthews	342441		Reader	Gina Livermore	388433
			07860		Wardens	Trish Armstrong	
Art Group		Gordon Wood	340129	Social Club	Chairman	Susan Clutterbuck	340475
Cricknet Club	Secretary	Tony Stemp	340398		Secretary	Peter Simmonds	340891
History Group		Michael Horne	340105		Steward	Tracy Holmes	341939
Horticultural Society		Michael Horne	340105	Test Valley Councillor		Linda Holmes	340521
First Responders	Coordinator	Marion Gray	341370			Neville Whiteley	01264
Football Club	Secretary	John Fryer	512695	Village Bus	Secretary	George Vaughan	301045
Hampshire County Councillor		Andrew Gibson	01264		Bookings	Pam Dawkins	301203
			861138		Private Hire	Julie Smith	301470
Member of Parliament		Caroline Nokes	512132	Village Hall	Operations	Mike Howe	301723
Mill Arms		Andrea & Ian Bentall	340401	(Reg.Charity	Chairman	Lynn Young	340134
Mottisfont Abbey	Est. Manager		340757	No. 291629)	Secretary	Alan Groves	341301
Neighbourhood Watch	Dunbridge	Cliff Astur	341922	W.I.	Bookings	Cathie Wood	340129
Parish Council	Clerk	Sue Holder	340130		Secretary	Cathie Wood	340129
	Chairman	John Millns	340347	Police	Press reporter	Audrey Aitchison	301156
	Councillors	Jeff Channing	340555		Village	PC John Viney	0845
		Jacque Horne	340105				0454545
		Andrew Simmonds					0845
		Gareth Jenkins	340922				0454545

The Acorn is also available at www.theacorn.org.uk where you will also find links to local schools, pubs, trains, council, church, WI and more.