



## ROYAL WEDDING FEVER COMES TO MOTTISFONT - EXCLUSIVE!

With the royal nuptials planned for 29th April, the *Acorn* can exclusively reveal plans by the National Trust to celebrate the event at Mottisfont Abbey. Our spies, er... that is, reporters have seen samples of memorabilia that will go on sale in the shop, such as this fine mug, all the way from China, pictured on the right. We thought it deserved close inspection.

Among other attractions to delight celebrity spotters will be William and Kate impersonators who will be happy to have their photograph taken with visitors. On their days off, they will be replaced by models borrowed from Madame Tussauds.

There are however signs that the forces of moderation are still in play. We understand that an idea for replacing signs to the loos at the Abbey with gilt versions, since they bear the couple's formal initials, was rejected as not being "in the best possible taste". Kenny Everett would have been proud.



## Village Supper at the Hall

Friday, 13th May, 7.30pm for 8pm

Come and spend an evening with neighbours and friends and enjoy a 3-course meal followed by tea/coffee.



£12 per person – Please bring your own wine.

Choose from:

Broccoli and Stilton Soup  
Prawn Cocktail



Chicken with a White Wine and  
Mushroom Sauce  
Roast Beef with all the Trimmings  
Caramelised Cheese & Onion Tartlets

all served with a selection of vegetables



Raspberry Pavlova  
Austrian Coffee Cake  
Sticky Toffee Pudding

To book contact Margaret on 341922  
(Payment when booking please)

## SMALL ADS

◆ Doll's crib for sale in perfect as new condition (see picture). £8 ono. Tel: 340905.



◆ For Sale: 3-wheel push chair in good condition; 4-wheel Silver Cross push chair + pram; child safety gates; maternity bouncy ball; electric sewing machine. All reasonable offers welcome.

Also, wanted: Man (that's me!), non-smoker, seeks TLC from energetic dog to borrow and keep company on occasional long country walks when the wife is away. No dog too big or small! Paul, 341451.

◆ Heaton-Wright Window Cleaning - regular, reliable service in the area, looking to take on more work. Tel. 341592 or 07877 990225. Email markthewindowcleaner@gmail.com.

◆ A new business operating in the heart of the village - Neil Sheppard of 4 Spearywell and Matthew Rowden (Kings Somborne) have gone into business as 'SUB ARB' – specialists in sub-contracted arboricultural services. Fully qualified and insured. If you have any need of a tree surgeon please give us a call for free advice and a free quote on 341939 or 07891 638733.

The deadline for inclusion of items in the May edition of the Acorn is 16th April.  
E-mail to [acornnews@mandercom.co.uk](mailto:acornnews@mandercom.co.uk).

## PARISH COUNCIL

### Annual Parish Meeting

Please come along to the Annual Parish Meeting on Wednesday, April 20th to find out what has been going on over the past year and plans for the coming year. Remember this is your meeting, and you will have the opportunity to raise any issues or problems you have.

The meeting starts at 7.30pm, and refreshments will be available at the end.

### Elections

If you are interested in becoming a councillor, elections will be held on 5th May this year. Nominations for candidates need to reach the

TVBC Returning Officer in Andover no later than noon on Monday, 4th April. Nomination forms are available from the clerk.

If you want to discuss becoming a councillor, or are interested in serving your community and making a real difference to the parish, feel free to contact anyone of us. Your parish needs your support!

### Date of the next meeting

30th March at 7.30pm

Sue Holder, Clerk  
340130

## News from Mottisfont

### Art gallery opening: special private view for Acorn readers on Saturday, 6th May, at 10am

The first exhibition in our new art gallery opens to the public on Saturday, 16th April. *New Connections: Modern British Art* will showcase some of the works from our Derek Hill Collection of twentieth-century art, exploring the friendships and creative connections that developed between artists, some of whom visited Mottisfont when Maud Russell lived here.

We would like to invite Acorn readers to a special private view on Saturday 6 May, at 10am. Louise Govier will welcome you with a short introductory talk in the new gallery at 10.15, and there will be a chance to see the exhibition, followed by coffee. Please come in via the Visitor Entrance at 10am.

### Brown signs

Test Valley Borough Council are going to be putting up more brown signs directing people to Mottisfont. They will describe the National Trust property with the oak leaf symbol and 'Mottisfont', and then on the line below will say 'house & gardens'.

We wanted to clarify that we aren't using the word 'Abbey' any more as it has proved confusing for our visitors, who expect the house to be an abbey like Romsey Abbey, and sometimes mix the two up. However, we have avoided a capital H on 'house' so that people do not think we are signposting to Mottisfont House in the village. The existing signs will also be amended.

Hope to see you on 6th May, if not before!

Louise Govier  
*Visitor Experience and Communities Manager*

## MOTTISFONT & DUNBRIDGE W.I.

We were pleased to welcome three new members to our March meeting, when we were shown an amazing display of quilted and embroidered items. Our speaker, Annette Williams, described how, when she went on holiday she always took a bag containing partially completed work, together with needles, scissors, silks, etc. She showed a quilted picture of the lava flow on Lanzarote, with embroidered flowers at the foot, a seascape with a solitary figure staring out to sea, which had been quilted, embroidered and colour washed for the sky, together with many more holiday inspirations. Annette also showed postcard sized pictures which had been embroidered, crocheted, tatted and quilted. Altogether, a wonderful collection of hand-crafted items.

We should like to thank very much everyone who



helped and contributed to our recent jumble sale. This was financially very rewarding, and the proceeds have been donated to the Red and White Leukaemia Appeal at

Southampton Hospital.

At our next meeting on Tuesday, 12th April, we welcome Irene Bowron, who will be talking about "A Garden For All Seasons". Members are also looking forward to other forthcoming events, including a theatre visit to The Plaza, Romsey, a guided garden tour followed by a pub supper, a quiz night, and other activities. Why not join us - we meet at 8pm on the second Tuesday of each month.

Audrey Atchison, 301156

## The Broughton and Mottisfont Community Bus Committee

Registered Charity Number: 284910

### EXCURSIONS IN 2011

Last year's excursion programme was very successful, so the Committee plans to run the following excursions during 2011, reflecting the discussions at the Annual General Meeting earlier this year:

- 18th May: Weymouth
- 15th June: Bournemouth
- 20th July: Swanage
- 17th August: Poole
- 21st September: Isle of Wight
- 19th October: Swindon



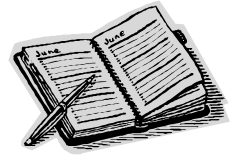
After two year years holding the price, it has been necessary to increase the price slightly to £13.00 per person per trip. As before there will be a supplement to cover the ferry costs on the Isle of Wight trip.

Bookings can be made with Elsie Croucher on 301428. Please do not contact her before the first day of the month in which you wish to travel.

It is important to note that bookings, once made, must be paid for.

### BUS TIMETABLE CHANGES

Following the note last month about the changes in start time of bus pass



usage and the resultant change in village bus timetable, there has been a reversal of the County Council decision!

This means that the village bus timetable is not changing, and those with concessionary bus passes will be able to use them within Hampshire after 9am (not the previously announced 9.30am). Good news which I hope hasn't confused everyone!

For a full copy of the current timetable contact Jacquie Horne on 340105.

## The Red & White Appeal - Southampton Hospital Charity

On Friday, 4th March a coffee morning was held, with a portrait demonstration by Robert Sharpe, followed in the evening by a Gardening Extravaganza with David Stone, John Wood & Peter Moore. On Saturday, 5th March this was followed by a W. I. Jumble Sale.

A big thank you to everyone who supported this Charity Appeal in very many ways: by offering their services, coming along to any or all of the events, and contributing financially, or with prizes for the raffle, etc.

Friday's efforts raised £1,203 and the W. I. Jumble Sale on Saturday a further £632. Today (9th March) we have passed £1,835 to the Appeal. It is expected there will be other money yet to come to add to this total.

Thanks especially to Tony Stemp our ace raffle man who took at least £260. Also our thanks go to Greg and Eileen McCann and Helen Conn for help throughout the day, and to all the W.I. ladies for their hard work on Saturday.

Finally, thanks to the Village Hall Committee for making the Village Hall available for the events.

Thank you,  
Gordon & Cathie Wood



Dear Friends,



This is my very favourite time of the year. The spring, the new year, the promise of the year to come, the doing away with the darkness and the light which daily increases.

Therefore to have Easter with spring is the most wonderful thing. We have journeyed through the necessary time of winter, the time of darkness and sleep, and now we approach the light and life.

The whole basis of our faith as Christians is the Resurrection. The reason we have our beautiful churches, our wonderful worship and liturgy, and our ethos of love and care is because we believe we having something more than just doing good. We are about worshipping a living Lord, and of growing in love and relationship with him.

St. Paul says, "If in this life only we have hope in Christ, we are of all men the most pitiable." (v.19) Paul said the most pitiful human being on this planet is a person who has put his faith in a

Jesus who is dead. Then he says, "But now Christ is risen from the dead..." (v.20) We do have a message - Jesus is Alive. We do have a mission; we are to tell everyone we know that Jesus is alive. We do have a ministry; because Jesus is alive we can offer life to the dying and hope to the living. As much as I marvel at the virgin birth of Jesus; as much as I wonder at the sinless life of Jesus; as much as I glory in the cross of Jesus; it is the resurrection of Jesus that makes Christianity unique among all of the world religions.

Please join us at the services throughout the Benefice as we meet to celebrate the resurrection of Christ on Easter Day, 24th April.

With blessings,

Ron Corne  
Rector

### CHURCH OF ENGLAND SERVICES FOR APRIL

Time	3 April Mothering Sunday	10 April Passion Sunday	17 April Palm Sunday	21 April Maundy Thursday	22 April Good Friday	24 April Easter Day
8.00	Broughton HC (CW)	Broughton HC (BCP)	-	-	-	<u>6am:</u> Nutley Farm Broughton HC
9.30	Bossington HC (BCP)	Broughton Family Service	Mottisfont HC (BCP)	-	<u>10am</u> Houghton Holy Week Trail	Bossington HC (BCP)
		Houghton <i>No service</i>	Broughton Sunday Club	-		Houghton HC (CW)
11.00	Mottisfont Family Service for Mothering Sunday <u>for all the Benefice</u>	Mottisfont Family Service	Broughton HC and Coffee Club	-	<u>2pm</u> Broughton Meditation on the Cross	Broughton HC (CW)  Mottisfont HC (CW)
6.00	Houghton Evensong	-	Houghton Evensong	<u>7.30pm</u> Broughton Eucharist of the Last Supper, & foot washing		-

Every Wednesday: 9.30 am - Broughton - Holy Communion (BCP)

-----  
BCP - Book of Common Prayer

CW - Common Worship

## For Families during April

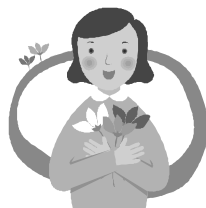
On Mothering Sunday, 3rd April, there will be a special Family Service for the Benefice at St. Andrew's, Mottisfont at 11 am.

Please come and join us.



On Palm Sunday, 17th April, families with young children are invited to Houghton Lodge for an Easter Egg hunt. Please assemble in the tea room from 4 pm.

For more details, contact Gina Livermore on 388433.



## BROUGHTON BRIGHT HOUR

Thursdays at 2.30pm in the New Room at St. Mary's Church, Broughton.

### Speakers for April:

7th April: Members Meeting  
14th April: Norman Thorne  
21st April: Mrs Gina Livermore  
28th April: David Marke

Please come and join us.

Barbara Perry, Booking Secretary, 301466

## Women's World Day of Prayer on 4th March

Thank you to everyone who came to the Service at St. Mary's for the Women's World Day of Prayer. This very special Service was prepared by the women of Chile. St. Mary's was very colourful with those taking part wearing bright shawls as we joined with people across the world and explored the question 'How many loaves have you?'

Our speaker this year, Mrs. Margaret Pickett, explained about the conditions of people in Chile.

We enjoyed fellowship together after the Service.

£70 has been sent to the World Day of Prayer movement for the projects run by Christian charities.

Thank you all so much.

Ann Ridout, 01980 862232

## Joan Miller

We were saddened to hear that Joan Miller, wife of Mac/Stuart, who died in January, died earlier this month.

We offer our condolences to Joan & Mac's family.

## Easter Concert

The Romsey Singers will be performing Brahms' German Requiem in Romsey Abbey on Saturday, 16th April at 7.30pm, as well as several motets by Mendelssohn. The whole concert is therefore in German, accompanied by four hands on the piano.

Tickets from Romsey Tourist Information, or members of the choir. £14 reserved, and £10 unreserved.

The same programme will also be performed at Beaulieu Abbey Church on 2nd April at 7pm.

Beryl Pratley

## The Thomas Dowse Trust

The Thomas Dowse Trust was created to provide people up to the age of 25 years with financial assistance towards educational requirements. The Trust meets four times a year (March, June, September and November) to award grants to those who show a need for financial assistance towards their education, whether it be for Pre-School, School, College or University.

The next Trust meeting will be held in June. All applications for the June meeting must be submitted to the Secretary, Mrs Christine Hoskins, The Old Thatch, High Street, Broughton, no later than the end of May. Any application received after this date will be carried forward to the next meeting in June 2011.

If you live in the Benefice of Bossington and Mottisfont and would like to apply for a grant, application forms can be obtained from the church, the village hall or the Secretary.

*(Continued from page 7)*

dish. Do not cut off any edges of the pastry yet. Put in the fridge to chill for 30 minutes. Blind bake (covered in parchment with baking beads) for 15 minutes at 190C (170C fan) / Gas Mark 5. Remove parchment & beads and bake for a further 5 - 10 minutes until light brown, having reduced the oven temperature to 160C (150C fan) / Gas Mark 3.

Sprinkle the grated cheese over the base of the pastry case and spread out the smoked salmon on the top. Wash the watercress thoroughly and cut off any roots. Place the cleaned watercress in the pastry case evenly over the salmon. Mix together the cream and eggs in a jug and season well with the salt and pepper. Pour half the mixture into the dish and place in the oven.

Once the quiche is safely in place and the oven door still open, pour the rest of the mixture into the dish. Bake for 35 - 45 minutes until the quiche is set with a slight wobble in the centre. Allow to cool and trim pastry edges. Cut into wedge slices and serve either warm or cold.

## Awbridge Primary School News

We are continuing to have lots of exciting events occurring in school. This week we were lucky enough to have a super team from Barclays Bank come into school to enhance some of our outside areas. They generously purchased a lot of wood stain and came to school to paint the wooden play



areas, the new gazebo and the fencing around the environmental zone...completely free of charge! The result is that these areas now look really fresh and new again. Thank you Barclays Bank for giving up your time to make our school look lovely. We all really appreciate it!

Last Friday some children from Class 4 made a positive contribution and took part in a variety of activities to support the local elderly community. They spent the morning talking with elderly residents, playing games, participating in art and crafts activities and brightened up the day at Romsey Community Centre. The children continued to be excellent representatives of our school and we are very proud of them.

We have had so much fun celebrating Book Day! A wonderful array of characters came into school with beaming smiles, from Little Red Riding Hood to Mr Tickle and a big Elmer the Elephant to greet the children at the gate. The fun didn't stop there! All children went aboard the Library van with Burglar Bill and chose new books for the library followed by a spectacular parade. Our celebrations continued with a book swap after school. It was so successful that we will be holding another book swap next term. You can visit our website at [www.awbridge.hants.sch.uk](http://www.awbridge.hants.sch.uk) for all the latest news including the weekly newsletter.



## What's on at the Mill Arms

**Live Theatre,  
Sunday, 17th April**



£30pp supper and live theatre at  
The Mill Arms

**John Osborne - 'Look back in Anger'**

For more details contact Andrea on 340401 or  
[millarms@btconnect.com](mailto:millarms@btconnect.com).

**Take part in our mystery envelope  
promotion and we could well be buying  
you lunch or dinner!**

You cannot lose! Seriously...here's how to play:

Step 1: When you sit down, you pay £5 cash per four diners\*.

Step 2: At the time your bill is presented pick an envelope, one of which contains a voucher for us to pick up your food bill.

Step 3: Go home happy!

\*Every envelope contains at least a voucher for £5. Other envelopes will reward you with a bottle of wine, champagne, free pizza, gift vouchers, an overnight stay or assorted other prizes all worth far more than your original £5 and all well worth winning!

## Great British Fish and Chip Supper Friday, 20th May 2011



Fish and chip suppers will be held on Friday, 20th May to raise awareness of spinal cord injury and support the Spinal Injuries Association. You can hold one in your own home, at work or hold a larger supper at your local community centre.

SIA will provide a fundraising pack containing hints and tips, recipes, invitations and donation envelopes. By inviting 7 friends and asking them to donate an additional £5.00 means you will raise at least £35.00 from your supper but we will also give you additional fundraising ideas to raise even more money for SIA.

The money raised from the suppers will help the SIA to offer support to individuals who become paralysed and to their families.

For more information or request a fundraising pack call Elizabeth Wright on 0845 678 6633 ext. 229 or email [fishandchips@spinal.co.uk](mailto:fishandchips@spinal.co.uk) or visit [www.spinal.co.uk](http://www.spinal.co.uk).

## WALKING GROUP

Our next walks are:

- ◆ Friday, 8th April. Meet at 10am at the Mill Arms.
- ◆ Friday, 13th May, to be decided - further afield and probably including a picnic or pub lunch. See next month's Acorn.



Gordon 340129

## The Great Poppy Party and Village Fayre

**Saturday, 11th June  
2pm to 5 pm**

**Houghton Village Hall**

Combining support for the Royal British Legion's 90th anniversary and a Village Fayre, there will be plenty of fun for all ages and all the family. With British Troops still involved in Afghanistan and other conflicts around the world the need for the Legion is greater than ever. The proceeds from the event will be split equally between the British Legion and Houghton Village Hall.



Could you:

- ◆ Help on the day – run one of the stalls or provide general help
- ◆ Donate: Cake(s), Raffle and Tombola prizes, Bric-à-Brac, Plants, Books, Toys, Games
- ◆ Lend a gazebo – most stalls will be outside
- ◆ Run a stall to raise money for other local groups
- ◆ Sponsor a stall – perhaps you run or work for a local company who might like to sponsor a stall in return for advertising; sponsorship from as little as £20 will be welcome.
- ◆ Perform in the arena – perhaps you're part of a group that dances, plays music, shows dogs, etc.
- ◆ Provide good fundraising ideas
- ◆ Display an interesting vehicle, or even give rides in it

To help get the most out of the day for everyone, there are some OPEN planning meetings at Houghton Village Hall, to which all are invited on Tuesday, 15th March at 8pm; Tuesday, 12th April at 8pm; and Tuesday, 10th May at 8pm. Do come along to hear the latest plans and offer your ideas and support!

For further information, suggestions or offers of support, please contact:

houghtonpoppyparty@yahoo.co.uk or Clare Stephens on 0781 4094029, or Nickie & Rob Furniss on 388579, or Lucy & Bob Gosse on 388617.

## HISTORY GROUP

A leaflet has been launched about The Sprat and Winkle line, the railway line that went from Redbridge to Andover, branching off at Kimbridge, then to Mottisfont, Horsebridge, Stockbridge and onwards to Andover. Some of the route is now used as The Test Way. The leaflet has pictures and information about the route the railway took. You can get copies at the Information Offices, or I have a number.

I have a meeting with Louise Govier of the National Trust to try putting some audio stories together by local people. If you know anyone who would like to help with this, please contact Michael Horne on 340105 or e-mail hornes@btinternet.com.

## Annie's Restaurant & Tea Rooms

- ▶ Wednesday night buffet, 5pm to 8pm, £5.99
- ▶ Mothering Sunday lunch, 3rd April: 3-course meal for £16.95 per person. Sittings at 12.15pm and 2pm. Call 340556 for more details.

### Morning Workshops at Kimbridge

10am till 1pm to include morning coffee and a buffet lunch £15 per person. Telephone 340777 for more information.

- ▶ 5th April, Glass Painting with local artist Marina Stuart
- ▶ 12th April, Abundant Herbs for the kitchen with Marion Randell
- ▶ 3rd May, Silk Painting with local artist Marina Stuart
- ▶ 7th June, Water Colours with local artist Marina Stuart

~ ~ ~

### OWTONS BUTCHERS

*will be joining Kimbridge Farm Shop  
from 1st April*

~ ~ ~

### WATERCRESS & SMOKED SALMON QUICHE

Locally grown watercress along with salmon is a perfect marriage. This quiche makes a great lunch served with salad and hot buttered new potatoes. This recipe makes up to 12 servings.

#### Ingredients:

- ◆ 500gms of short crust pastry
- ◆ 250gms smoked salmon, roughly chopped
- ◆ 50gms Cheddar Cheese, grated
- ◆ 1 bunch of Hampshire Watercress (about 80-90gms)
- ◆ Salt & freshly milled black pepper
- ◆ 710ml double cream
- ◆ 6 eggs, beaten

#### How to make it:

Roll out the pastry to fit in a 23cm loose-bottomed flan

*(Continued on page 5)*



## Mottisfont Social Club

Mottisfont Social Club welcomes families and offers a friendly face and reasonably priced bar. We have a range of giant games for children, and for the adults there is a choice of a snooker table, pool table, 5 dart boards, skittle alley, adequate parking and a garden for the warmer weather. The club is very well situated in the heart of the village and members can take advantage of the premises for their birthday parties and family celebrations – come in and ask for details.

The AGM took place on Tuesday, 1st March. Minutes of this meeting will be posted on the notice board so members can view and add comments. The new committee for the club consists of:

Chairman: Peter Simmonds

Secretary: Naomi Crowther

Treasurer: John Fryer

Others: Tracy Holmes, Jackie Appleby, Keith Fryer, Peter Holmes, Paula Lucas, Eddie Smith, Mike Lane

### Club Opening Hours

Monday – Saturday: 7pm till 11pm

Sunday lunchtime: Noon till 2pm

Sunday evening: 7pm till 10.30pm

### What's On

Sat., 16th April: 70's themed disco and fancy dress.

Sat., 4th June: Stardust

Sat., 23rd July: Race Night in aid of Mottisfont Cricket Club

Sat., 30th July: Scotty

Mondays: Ladies darts, Snooker

Tuesdays: Billiards

Wednesdays: Airborne Darts (mixed)

Thursdays: Bingo, Crib

Fridays: Men's darts, Thrift Club

Saturdays: Meat draw and occasional entertainment

Sundays: Chase the Aces, Skittles.

## CENSUS 2011

In March and April, 35,000 census field staff will be taking to the streets to offer assistance to, and collect questionnaires from, residential households and communal establishments across the country. They will be working for the Office for National Statistics which runs the 2011 Census in England and Wales.

Census day is on Sunday, 27th March 2011, although people can complete their questionnaires before, on or after that date. Householders can complete online or return their paper questionnaire via prepaid post.

We have an address register which lists all households. When we get a completed questionnaire back, we tick the household off the list. That way, come 6th April when our census collectors start visiting households who haven't returned their questionnaire promptly, we make sure we are only going to non-responders. Completing a census questionnaire is compulsory; the few who refuse may be prosecuted and face a fine of up to £1,000, but this is a last resort.

### **Collecting from residential households (21 March – 6 May)**

Collectors will be working at different times of the day and evening, seven days a week. The majority of collectors will be working by themselves. Census field staff will always carry their photo ID, bearing the 2011 Census and ONS logos, and they should automatically show it to residents.

Our staff will do everything they can to reassure people and will not try to prevent anyone from checking their identity. Collectors should never enter the household unless they are asked to do so.

## Who's Who, What's What and Where's Where in Mottisfont and Dunbridge

<b>Acorn</b>	Editors	Peter & Julia Barnett	340793	<b>St. Andrew's Church</b>	Rector	Revd. Ron Corne	301287
<b>Art Group</b>		Gordon Wood	340129		Reader	Gina Livermore	388433
<b>Cricket Club</b>	Secretary	Tony Stemp	340398		Wardens	Trish Armstrong	
<b>History Group</b>		Michael Horne	340105			Susan Clutterbuck	340475
<b>Horticultural Society</b>		Michael Horne	340105	<b>Social Club</b>	Chairman	Peter Simmonds	340891
<b>First Responders</b>	Coordinator	Marion Gray	341370		Secretary	Tracy Holmes	341939
<b>Football Club</b>	Secretary	John Fryer	512695		Steward	Linda Holmes	340521
<b>Hampshire County Councillor</b>				<b>Test Valley Councillor</b>		Neville Whiteley	01264 811101
		Andrew Gibson	01264	<b>Village Bus</b>	Secretary	George Vaughan	301045
<b>Member of Parliament</b>		Caroline Nokes	512132		Bookings	Pam Dawkins	301203
<b>Mill Arms</b>		Andrea and Ian Bentall	340401		Private Hire	Julie Smith	301470
<b>Mottisfont Abbey</b>	Est. Manager		340757		Operations	Mike Howe	301723
<b>Neighbourhood Watch</b>	Mottisfont	Alan Earthrowl	341799	<b>Village Hall</b>	Chairman	Lynn Young	340134
	Dunbridge	Cliff Astur	341922	(Reg. Charity	Secretary	Alan Groves	341301
<b>Parish Council</b>	Clerk	Sue Holder	340130	No. 291629)	Bookings	Cathie Wood	340129
	Chairman	John Millns	340347	<b>W.I.</b>	Secretary	Cathie Wood	340129
	Councillors	Jeff Channing	340555		Press reporter	Audrey Aitchison	301156
		Alan Earthrowl	341799	<b>Police</b>	Village	PC John Viney	0845 045 45 45
		Jacquie Horne	340105		Romsey		0845 045 45 45
		Andrew Simmonds					

Mottisfont & Dunbridge *Acorn* is edited and published by Peter & Julia Barnett, Dunelm House, Barley Hill, Dunbridge, Romsey, SO51 0LF, telephone: 01794 340793, acornnews@mandercom.co.uk, with assistance from Kimbridge Farm Shop and the Mottisfont Social Club.

Opinions expressed in The *Acorn* are not necessarily those of the editorial team. We do our best to ensure the accuracy of items in The *Acorn*, but we will not be responsible for the consequences of errors or omissions. You should check with organisers of events in case there are last minute changes.

© Mottisfont & Dunbridge *Acorn*, 2011.