



Swans on the Dun

We were delighted by this photograph of the charming scene of swans with their cygnets on the river Dun, taken recently by Pat Francis.

We were moved to try to find a poem about spring, swans, rivers and stuff, but couldn't.

It's still a lovely picture.

Julia and Peter



Letting the trains take the strain

PASSENGER numbers continue to grow at Mottisfont & Dunbridge station. Latest figures show that 14,665 people used the station during the 12-month period ending September 2008. This was an increase of 2,265 on the previous year. Generally across the UK rail network there has been an increase in passenger numbers. But, it has become apparent more people are using Mottisfont & Dunbridge station to reach Mottisfont Abbey and the surrounding estate owned by the National Trust.

There's more good news about the station: the Three Rivers Community Rail Partnership has secured funding to decorate the platforms with flowers this summer. Timsbury-based Choice Plants will be filling the flower tubs with plants, and Gordon and Cathie Wood, who are Three Rivers Community Rail Partnership volunteers, will be watering them and keeping the station platforms tidy.

The free minibus service that operated between Mottisfont & Dunbridge station, Mottisfont Abbey, Sir Harold Hillier Gardens at

Ampfield and Romsey rail station on Sundays and bank holidays last year is back on the road again this summer. However, this year the bus will also be calling at Kimbridge Gift, Food and Deli, Choice Plants and Romsey Abbey. The bus is operated by Test Valley Community Services, and funding is by organisations within the Three Rivers Community Rail Partnership.

South West Trains has also confirmed it plans to maintain the current level of service at Mottisfont & Dunbridge station for the next year at least, which is good news for everyone who uses the trains.

And finally, the partnership has published a Three Rivers Line Guide covering the rail route between Salisbury and Southampton via Eastleigh and Chandler's Ford. This includes history of all stations, a detailed map, and information about tourist attractions in the area. A copy of the latest timetable is enclosed with your Mottisfont and Dunbridge Acorn.

Andy Simmonds, TRCRP volunteer.

The deadline for the July *Acorn* is 16th June.
Please e-mail contributions to acornnews@mandercom.co.uk.
We cannot guarantee that articles received after this date will be included in the next issue.

PARISH COUNCIL

At the Annual Parish Meeting on 15th April, PC Rupert Murray-Twinn introduced himself as the Safer Neighborhood Officer, based at Romsey Station. He has been in post for six months, having transferred from the Metropolitan Police Force.

He reported that the crime figure for the last six months in Mottisfont and Dunbridge was 6, half of which were non-dwelling burglaries. His main concerns were break-ins to remote sheds, barns and outbuildings which are hard to patrol, due to the locality. His advice was for owners to be secure, suggesting two padlocks, security marking, and data tags.

Two thefts from cars were reported. He recommends that no valuables be left in parked vehicles.

An incident of stolen logs was also reported.

PC Murray-Twinn reported that Neighbourhood Watch amply monitors the area, and that Farmwatch is being resurrected.

PC Murray-Twinn encourages residents to complain about potholes in roads to the Highways Agency.

Fly-tipping appears not to be a problem in the village, but again he encourages residents to report any known incidents to TVBC environment services, who are responsible for clearing up. If a resident sees someone fly-tipping, call the police immediately with a description and ideally a registration number.

With regards to speeding, 30mph is largely upheld in the centre of Mottisfont, and a speed unit is on a rota on Hatt Hill. Before Christmas a few cars were caught travelling at over 50mph. These people were stopped and spoken to.

Rupert can be contacted on 0845 045 4545

The next Parish Council meeting is on 27th May.

Sue Holder

The Thomas Dowse Trust

The Thomas Dowse Trust was created to provide people up to the age of 25 years with financial assistance towards educational requirements. The Trust meets four times a year (March, June, September and November) to award grants to those who show a need for financial assistance towards their education, whether it be for Pre-School, School, College or University.

The next Trust meeting will be held in June. All applications for the June meeting must be submitted to the Secretary, Mrs Christine Hoskins, The Old Thatch, High Street, Broughton, no later than the end of May. Any application received after this date will be carried forward to the next meeting in September 2009.

If you live in the Benefice of Bossington and Mottisfont and would like to apply for a grant, application forms can be obtained from the church, the village hall or the Secretary.

SMALL ADS

HELP WITH YOUR GARDEN?

Sparsholt College student studying Countryside Management requires gardening work in the Mottisfont area during the summer holiday months. Very keen responsible hard worker with experience in horticulture. Reasonable rates. Would be helpful if any larger garden tools could be provided. Contact Justin on 01794 341301.

Conditions

The editors will accept short advertisements of up to 50 words for items for sale or exchange from individuals (no commercial ads., please) free of charge, subject to space. The editors may refuse to accept any advertisement at their sole discretion. The editors will accept no responsibility for the content of any advertisement, the items advertised, nor for any transaction that may result. It is your responsibility to ensure that the goods are as described.



MOTTISFONT & DUNBRIDGE W.I.



There is a general concern for the future of honeybees in the UK and globally. John Hanks, a local Bee Keeper, gave a fascinating talk on this subject at our Resolution meeting in May. The decline of honey bees represents a major loss in biodiversity, as honey bees are not only responsible for producing honey, but play a vital role in pollinating plants for food and other crops. Approximately a third of our diet is directly dependant on bees, making them central to our existence. Currently, honey bees are coming under threat from pests and diseases for which treatments are not fully understood, or are ineffective.

Monday, 1st June: Group Quiz Night at Sherfield English Village Hall at 7.00pm. Our team is all set, and hopefully will be able to answer most of the questions.

Friday, 12th June: a day trip to Bath with a Blue Badge Guide has been planned. Depart Dunbridge station at 8.59am.

Friday, 19th June: a Cheese and Wine Evening will take place from 6pm to 8.30pm in the beautiful grounds of Mottisfont House, by kind permission of Mr. and Mrs. Clutterbuck. Entry is £4, and proceeds will be donated to First Responders. All are most welcome.

Monday, 29th June: an evening outing to Hinton Ampner gardens (National Trust). Meet in the car park at 7pm. £5 car share.

Tuesday, 9th June: local celebrity and DJ John Curtis and his partner will give a Dance Demo of 30/40's Early Swing at 8pm in Mottisfont Village Hall. There will be a DIY BBQ. All are welcome to come along and rock the night away!

Cathie Wood, 340129.



MILL ARMS OWNERS OPEN THIRD PUB

Andrea and Ian Bentall, landlords of the Mill Arms, have just celebrated opening their third pub, The Grey Hound in Broughton.

The refurbished pub was fully booked for its opening night on Saturday, 16th May.

The Grey Hound will be open for the same hours as the Mill Arms: Monday to Friday, 12 to 2.30pm and 6pm to close, and open all day on Saturdays and Sundays from noon.

There's take away pizza, a full Italian menu and wine list, English ales, disabled access, and good parking. Josh, known to many at the Mill Arms, will be the manager at The Grey Hound.

Andrea said, "If anyone would like to see a menu or be added to our mailing list of events for all the 3 pubs, just send us an e-mail." The e-mail address is millarms@btconnect.com.



Dear Friends,



It is June already, and on the 1st June the Church remembers what is known as The Visitation (Luke 1:39-49). This is the real life story of two mothers meeting for the first century equivalent of a chat over a cup of coffee. Both mothers are pregnant, and both mothers are carrying in their wombs extraordinary children who would grow up and change the world.

Years ago in Old Alresford Place, the Diocesan Retreat Centre where once lived Mary Sumner, who was the Founder of the Mother's Union, there was a painting over the fireplace. This painting depicted these two mothers with Mary, Jesus's Mother, quietly speaking in the ear of Elizabeth with the revelation of both her pregnancy and the knowledge conveyed to her of whom her child would be.

Elizabeth would give birth to the fiery missionary John the Baptist, and Mary to the Lord Jesus Christ. Upon them meeting, scripture tells us that Elizabeth's child leapt in her womb and she was filled with the Holy Spirit. Already unborn John recognised he was in the presence of the Lord of Life, although still an unborn child in Mary's womb.

It is a most amazing story of wonderment and joy, showing us both the deeply precious value of the unborn child and also the mother's profound perception and joy as she prepares to welcome a new life into the world.

Mary needs to talk to Elizabeth, and that shows how vitally important it is for all of us to have someone to talk to about both the ordinary and the extraordinary. Talking to a good friend or trusted family member can be as healing as the finest medicine, for it is medicine to our hearts and souls. Many people today don't get a chance to have a good natter, especially if they are housebound or isolated in other ways. Yet a chat and a change of scenery can be a real life giving boost to those who are on their own. So please remember your neighbour or that elderly person who is unable to get out and about, and see if you can pop in for a chat. You could make the world of difference to that person's day, and do yourself some good as well.

With blessings

Ron Corne (Rector)

CHURCH OF ENGLAND SERVICES FOR JUNE

	7th June TRINITY SUNDAY	14th June TRINITY 1	21st June TRINITY 2	28th June TRINITY 3
8.00 am	Broughton HC CW	Broughton HC BCP		
9.30 am	Bossington HC BCP	Broughton Family Service	Mottisfont HC BCP	Broughton HC CW
	Broughton Godly Play	Houghton HC CW	Broughton Sunday Club	Broughton Sunday Club
11.00 am	Mottisfont Matins	Mottisfont Family Service	Broughton HC CW	Mottisfont Family Communion
			Broughton Coffee Club	
6.00 pm	Houghton Evensong		Houghton Evensong	Houghton HC BCP

BLUEBELL WALK

Thank you to everyone who attended the recent Bluebell Walk or donated in any way.

We made £191.60 profit on the event, and a big thank you goes to Phil & Dylan for taking 51 people on the walk and getting them all back safely.

Ann Saunders
Treasurer

BROUGHTON BRIGHT HOUR

Thursdays at 2.30 pm in the New Room
at St. Mary's Church, Broughton

4th June: Mr. David Sullivan
11th June: Members Meeting
18th June: Mrs. Jenny Larken
25th June: Mr. Alan Ellsmore

Everyone welcome. Do come and join us.
Barbara Perry, Booking Secretary, 301466

MOTTISFONT RE-VISITED

I want to say a big thank you to the groups who provided material for displays at the Village Hall on Saturday, 16th May. Your hard work was appreciated, and it is obvious that the groups are very busy in their activities.

The Church's role in this was to improve their relationship to the village community in general. I'm not sure how much we achieved, but I do know that I heard animated conversation and, dare I say, friendly argument over various old photos. Fortunately there was also quite a bit of laughter.



I think most of us learned a lot about Kimbridge Farm in the old days, thanks to Anne Humbert, who was very willing to explain everything to us.

Thanks are also due for the manpower in clearing up.

One thing I am very sure of is that we are fortunate to have the Village Hall. No wonder it has so many bookings, with its excellent conditions and friendly welcome.

Valda White for St Andrew's Church.

REDUCE OUR SPEED!

As everyone is well aware, speed issues have been very much in the news recently. The nearby village of Timsbury has recently secured a 30mph speed limit throughout its length of the A3057, and Broughton now has a 30mph speed limit continuing right through the entire length of the B3084 which is within their village. There is even a 30mph speed limit around Belbins, Romsey, which also stretches past Brook Farm down to just before the junction to Bunny Lane.

This is all very welcome. However, why is it that here in our own village of Mottisfont do we seem to be unable to secure a 30mph speed limit along our stretch of the B3084? It is a well walked road by villagers and tourists alike, and from Bengers Lane north to Spearywell Farmhouse there are no footpaths, and no decent verges to be able to step off of the road to avoid vehicles. Clearly the

40mph speed limit which exists is not acceptable, and the majority of vehicles exceed this limit anyway, which makes negotiating the road by foot very perilous indeed.

I therefore ask the Mottisfont Parish Council on behalf of the Parishioners, to lobby to get us the 30mph speed limit that we so desperately need, stretching from Dunbridge Station to Spearywell Farm. If anyone doubts the need for a reduction to a 30mph speed limit along this stretch of road, then I suggest that they walk along it for themselves, particularly during the morning between 6.30am-9am, and evening between 3.30pm-6.30pm.

Tina Groves

AWBRIDGE SCHOOL NEWSLETTER



DIARY DATES:

5th June: Awbridge School Fete – in the evening, 6pm to 8pm
10th June: Sports Day
16th June: Sports Day (reserve date)
23rd June: New Parents' Evening

An exciting project has started for the school's environmental area, in conjunction with a lottery funded Community Builders project. The idea is to develop the area of the school in conjunction with local artist Jaquie Rolls, and parents. The first project within the environmental area will be making a windbreak area which will be used for storytelling, mini beast hunts and such like, using local natural materials and then involving the children weaving in their own recyclable items into the structure. The National Trust have very kindly supported this project, and have donated a large amount of hazel from the Mottisfont Estate which will make the main frame of the windbreak. Additional project ideas include a vegetable plot, flower garden, maze, path, bat and hedgehog boxes, and a range of activities that could take place in the area.

Awbridge School PTA is going to try something different for this year's Summer Fete, by holding

it on a Friday evening.

There will be live music, a bar and BBQ, and the usual games and stalls. The PTA is actively seeking new recruits, as many of their long standing members will be standing down soon. Please contact the school if you feel you could become involved.

Children have already started rehearsing for this summer's production, a play based on the Harry Potter books. Performances will take place between 13th and 16th June.

The school has made a reserve date for this year's Sports Day, to avoid the event being rained off. The children have already started training for the event, as well as enjoying all the other extra sporting activities put on outside the school curriculum. These include football, netball, running club, jujitsu and the new multi-sport after school club.



GARDENING CLUB

We are all looking forward to some good weather for our Annual American Supper evening, and in July our B.B.Q.



Don't forget our outing on Sunday, 21st June, to Bramdean Gardens and Hinton Ampner - see



FOODY FUNNIES

The nobles of all dogs is the hot-dog; it feeds the hand that bites it.

Watermelon is a good fruit. You eat, you drink, you wash your face.

If the soup had been as warm as the wine, and the wine as old as the fish, and the fish as young as the maid, and the maid as willing as the hostess, it would have been a very good meal.

Review of a Kent restaurant: "Geographically, it's halfway between Elmer's End and Pratt's Bottom. Gastronomically, it's about the same."



GARDENING CLUB COACH TRIP

There is a coach trip on Sunday, 21st June to

Bramdean Gardens.

There will be a stop for lunch (or a picnic) at the

Flowerpot Pub,

then on to

Hinton Ampner.

We are leaving Broughton at 9am and picking people up on the way to Dunbridge.

The cost of coach and entry to both gardens is £20.80 (N.T. members £15.80).

For full details, please contact Michael Horne on 340105.

**SOMETHING DIFFERENT
IN THE EVENING...**

AWBRIDGE SCHOOL FETE

Friday, 5th June

6-8pm

**All the usual stalls,
fun and games,
BBQ**

All welcome!

WALKING GROUP

The next walk will be on **Friday, 5th June**, at 10am from outside the Mill Arms.

As expected, after the walk to Salisbury from Dean last month, I've been sacked (*oh, no, you haven't!* - Ed.), and this walk will be led by the very professional and qualified guide, Cliff Astur - expect the unexpected!



July's walk will be on Friday, 10th. Details later.

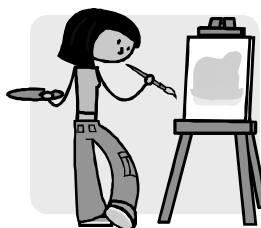
Warning from Hampshire Trading Standards Service

We have had reports of leaflets being distributed door to door across the county offering money for antiques and restoration work. It appears that the elderly and vulnerable are particularly targeted. Antiques are undervalued and restoration work not completed. In one incident in the Odiham area an elderly man was tricked out of a considerable sum.

Residents are advised to be careful and wary of any such offer that may come by way of a leaflet or flyer.

Our Quick Response team would be interested in hearing of any such leaflets received or any incidents. Please contact them on 01962 833666.

ART GROUP



The Art Group meets every Thursday, 2 - 4pm at the Village Hall. All skills from beginner to expert are most welcome.

Details from Gordon on 340129

PUT THOSE CLAWS AWAY...

1st whist player: "Well, how would you have played that hand?"

2nd whist player: "Under an assumed name."

~~~0~~~

Critic: "I liked your book. Who wrote it for you?"

Writer: "Glad you enjoyed it. Who read it to you?"

~~~0~~~

Musician: "Oh well, you play Bach your way. I'll play it *his*."

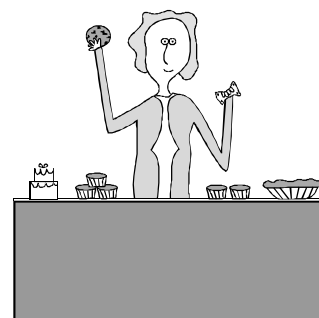
MOTTISFONT VILLAGE FETE



Note the date: **Sunday, 16th August**, at the Village Hall, from 2pm. Not to be missed - no holidays to be booked!

This year there will be live music with **The Birnie Boozie Band.**

Do you have any nice raffle prizes to offer? (E.g. a trip to Outer Mongolia, swimming with sharks, etc.) Anything a little unusual and appealing to put on the front of the raffle tickets!



Any suggestions about the fete and adding more spice to it would be most welcome!

Gordon, 340129

DIARY

| | | |
|---------------------|-----------------------------|-------------------------------------|
| Monday, 1st June | WI Quiz Night | 7pm, Sherfield English Village Hall |
| Friday, 5th June | Walking Group | 10am, outside the Mill Arms |
| Friday, 5th June | Awbridge School Fete | 6-8pm, Awbridge School |
| Tuesday, 9th June | Swing Dance Demo | 8pm, Mottisfont Village Hall |
| Friday, 12th June | WI Day Trip to Bath | 8.59am, Dunbridge Station |
| Friday 19th June | Cheese and Wine Evening | 6pm - 8.30pm, Mottisfont House |
| Sunday, 21st June | Garden Club trip | 9am, Broughton and Dunbridge |
| Monday, 29th June | WI Evening at Hinton Ampner | 7pm, car park |
| Sunday, 16th August | Village Fete | Village Hall |

Every Thursday, 2-4pm, Art Group in the Village Hall

BRAIN TEASER

This month's challenge is to name the books of which these are the first sentences:

1. "It was a bright cold day in April, and the clocks were striking 13."
2. "It is a truth universally acknowledged, that a single man in possession of a good fortune, must be in want of a wife."
3. "Last night I dreamt I went to Manderley again."
4. "I can see by my watch, without taking my hand from the left grip of the cycle, that it is eight-thirty in the morning."

*Answers to last month's teaser:
There are 35 triangles in the figure!*

Who's Who, What's What and Where's Where in Mottisfont and Dunbridge

| | | | | | |
|---|------------------------|--------|-----------------------------------|-------------------|----------------|
| Acorn Editors | Peter & Julia Barnett | 340793 | St. Andrew's Church Rector | Revd. Ron Corne | 301287 |
| Acorn Pre-School Group | | | Reader | Gina Livermore | 388433 |
| Art Group | Gordon Wood | 340129 | Wardens | Trish Armstrong | |
| County Councillor | Michael Woodhall | 01264 | | Susan Clutterbuck | 340475 |
| | | 810500 | | | |
| Cricket Club Secretary | Tony Stemp | 340398 | Social Club Chairman | Peter Simmonds | 340891 |
| History Group | Michael Horne | 340105 | Secretary | Lanita Begg | 529631 |
| Horticultural Society | Michael Horne | 340105 | Steward | Linda Taggart | 340521 |
| First Responders Coordinator | Kay Murrant | 340289 | Test Valley Councillor | Neville Whiteley | 01264 |
| Football Club Secretary | John Fryer | 512695 | | | 811101 |
| Member of Parliament Constituency Office | Sandra Gidley | 511900 | Village Bus Secretary | George Vaughan | 301045 |
| Mill Arms | Andrea and Ian Bentall | 340401 | Bookings | Pam Dawkins | 301203 |
| Mottisfont Abbey Est. Manager | | 340757 | Private Hire | Julie Smith | 301470 |
| Neighbourhood Watch Mottisfont | Alan Earthrowl | 341799 | Operations | Mike Howe | 301723 |
| Parish Council Dunbridge | Cliff Astur | 341922 | Village Hall Chairman | Jon Butler | 340740 |
| Clerk | Sue Holder | 340130 | (Reg.Charity Village Hall | Jon & | |
| Chairman | John Millns | 340347 | No 291629) | Entertainments | Heather Butler |
| Councillors | Jeff Channing | 340555 | | Secretary | Alan Groves |
| | Alan Earthrowl | 341799 | | Bookings | Cathie Wood |
| | Jacquie Horne | 340105 | W.I. Police Secretary | Margaret Astur | 341922 |
| | Stuart Miller | 340903 | Village | PC John Viney | 0845 |
| | Andrew Simmonds | | | | 045 45 45 |
| | | | Romsey | | 0845 |
| | | | | | 045 45 45 |

Mottisfont & Dunbridge *Acorn* is edited and published by Peter & Julia Barnett, Dunelm House, Barley Hill, Dunbridge, Romsey, SO51 0LF, telephone: 01794 340793, acornnews@mandercom.co.uk, with assistance from The Mill Arms, Dunbridge, and Mottisfont Parish Council. Opinions expressed in The Acorn are not necessarily those of the editorial team. We do our best to ensure the accuracy of items in The Acorn, but we will not be responsible for the consequences of errors or omissions. You should check with organisers of events in case there are last minute changes.
© Mottisfont & Dunbridge Acorn, 2009.